

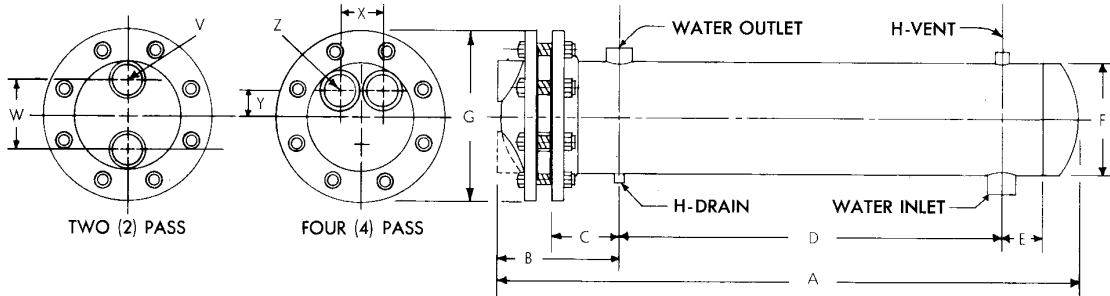


DIVERSIFIED HEAT TRANSFER, INC.

1710 Flushing Avenue • Ridgewood, NY 11385
 Phone: 718-386-6666 / 800-221-1522 • Fax: 718-386-7809
 Manufacturers and Designers Since 1938.

Web Site: <http://www.dhtnet.com>

TYPE "WC" HEAT EXCHANGERS - STANDARD "U" TUBE DESIGN • CAST IRON HEAD



DIMENSIONS: All dimensions are in inches and are subject to change. Where dimensions are needed for layout, write factory for certified prints

Unit	HEAD					SHELL								
	2 Pass V(NPT) W		4 Pass Z(NPT) X Y			A	B	C	D	E	F	G	H(NPT)	Inlet & Outlet
WC4B()-24	1-1/2	2-1/2	1	2-1/8	1	29-1/4	7-3/4	5	15	4	4-1/2	9	3/4	1-1/2NPT
30	↑	↑	↑	↑	↑	35-1/4	↑	↑	21	↑	↑	↑	↑	↑
36	↑	↑	↑	↑	↑	41-1/4	↑	↑	27	↑	↑	↑	↑	↑
42	↑	↑	↑	↑	↑	47-1/4	↑	↑	33	↑	↑	↑	↑	↑
48	↑	↑	↑	↑	↑	53-1/4	↑	↑	39	↑	↑	↑	↑	↑
54	↑	↑	↑	↑	↑	59-1/4	↑	↑	45	↑	↑	↑	↑	↑
60	↑	↑	↑	↑	↑	65-1/4	↑	↑	51	↑	↑	↑	↑	↑
66	↑	↑	↑	↑	↑	71-1/4	↑	↑	57	↑	↑	↑	↑	↑
72	↑	↑	↑	↑	↑	77-1/4	↑	↑	63	↑	↑	↑	↑	↑
78	↑	↑	↑	↑	↑	83-1/4	↑	↑	69	↑	↑	↑	↑	↑
84	↑	↑	↑	↑	↑	89-1/4	↑	↑	75	↑	↑	↑	↑	↑
90	↑	↑	↑	↑	↑	95-1/4	↑	↑	81	↑	↑	↑	↑	↑
96	1-1/2	2-1/2	1	2-1/8	1	101-1/4	7-3/4	5	87	4	4-1/2	9	3/4	1-1/2NPT
WC5B()-24	2	3	1-1/4	2-3/8	1-3/16	30-1/8	8-1/8	5	15	4	5-9/16	10	3/4	2 NPT
30	↑	↑	↑	↑	↑	36-1/8	↑	↑	21	↑	↑	↑	↑	↑
36	↑	↑	↑	↑	↑	42-1/8	↑	↑	27	↑	↑	↑	↑	↑
42	↑	↑	↑	↑	↑	48-1/8	↑	↑	33	↑	↑	↑	↑	↑
48	↑	↑	↑	↑	↑	54-1/8	↑	↑	39	↑	↑	↑	↑	↑
54	↑	↑	↑	↑	↑	60-1/8	↑	↑	45	↑	↑	↑	↑	↑
60	↑	↑	↑	↑	↑	66-1/8	↑	↑	51	↑	↑	↑	↑	↑
66	↑	↑	↑	↑	↑	72-1/8	↑	↑	57	↑	↑	↑	↑	↑
72	↑	↑	↑	↑	↑	78-1/8	↑	↑	63	↑	↑	↑	↑	↑
78	↑	↑	↑	↑	↑	84-1/8	↑	↑	69	↑	↑	↑	↑	↑
84	↑	↑	↑	↑	↑	90-1/8	↑	↑	75	↑	↑	↑	↑	↑
90	↑	↑	↑	↑	↑	96-1/8	↑	↑	81	↑	↑	↑	↑	↑
96	2	3	1-1/4	2-3/8	1-3/16	102-1/8	8-1/8	5	87	4	5-9/16	10	3/4	2 NPT
WC6B()-24	2-1/2	4	1-1/2	3	1-1/2	30-7/8	8-3/8	5	15	4	6-5/8	11	3/4	2NPT
30	↑	↑	↑	↑	↑	36-7/8	↑	↑	21	↑	↑	↑	↑	↑
36	↑	↑	↑	↑	↑	42-7/8	↑	↑	27	↑	↑	↑	↑	↑
42	↑	↑	↑	↑	↑	48-7/8	↑	↑	33	↑	↑	↑	↑	↑
48	↑	↑	↑	↑	↑	54-7/8	↑	↑	39	↑	↑	↑	↑	↑
54	↑	↑	↑	↑	↑	60-7/8	↑	↑	45	↑	↑	↑	↑	↑
60	↑	↑	↑	↑	↑	66-7/8	↑	↑	51	↑	↑	↑	↑	↑
66	↑	↑	↑	↑	↑	72-7/8	↑	↑	57	↑	↑	↑	↑	↑
72	↑	↑	↑	↑	↑	78-7/8	↑	↑	63	↑	↑	↑	↑	↑
78	↑	↑	↑	↑	↑	84-7/8	↑	↑	69	↑	↑	↑	↑	↑
84	↑	↑	↑	↑	↑	90-7/8	↑	↑	75	↑	↑	↑	↑	↑
90	↑	↑	↑	↑	↑	96-7/8	↑	↑	81	↑	↑	↑	↑	↑
96	↑	↑	↑	↑	↑	102-7/8	↑	↑	87	↑	↑	↑	↑	↑
102	↑	↑	↑	↑	↑	108-7/8	↑	↑	93	↑	↑	↑	↑	↑
108	↑	↑	↑	↑	↑	114-7/8	↑	↑	99	↑	↑	↑	↑	↑
114	↑	↑	↑	↑	↑	120-7/8	↑	↑	105	↑	↑	↑	↑	↑
120	2-1/2	4	1-1/2	3	1-1/2	126-7/8	8-3/8	5	111	4	6-5/8	11	3/4	2NPT



DIVERSIFIED HEAT TRANSFER, INC.

1710 Flushing Avenue • Ridgewood, NY 11385
 Phone: 718-386-6666 / 800-221-1522 • Fax: 718-386-7809
 Manufacturers and Designers Since 1938.

Web Site: <http://www.dhtnet.com>

TYPE "WC" HEAT EXCHANGERS - STANDARD "U" TUBE DESIGN • CAST IRON HEAD

Unit	HEAD					SHELL									
	2 Pass		4 Pass			A	B	C	D	E	F	G	H(NPT)	J	Inlet & Outlet
	V(NPT)	W	Z(NPT)	X	Y										
WC8B()-24	3	5	2	4	2-1/8	32	9	5	13	6	8-5/8	13-1/2	3/4	—	3NPT
30	↑	↑	↑	↑	↑	38	↑	↑	19	↑	↑	↑	↑	—	↑
36	↑	↑	↑	↑	↑	44	↑	↑	25	↑	↑	↑	↑	—	↑
42	↑	↑	↑	↑	↑	50	↑	↑	31	↑	↑	↑	↑	—	↑
48	↑	↑	↑	↑	↑	56	↑	↑	37	↑	↑	↑	↑	—	↑
54	↑	↑	↑	↑	↑	62	↑	↑	43	↑	↑	↑	↑	—	↑
60	↑	↑	↑	↑	↑	68	↑	↑	49	↑	↑	↑	↑	—	↑
66	↑	↑	↑	↑	↑	74	↑	↑	55	↑	↑	↑	↑	—	↑
72	↑	↑	↑	↑	↑	80	↑	↑	61	↑	↑	↑	↑	—	↑
78	↑	↑	↑	↑	↑	86	↑	↑	67	↑	↑	↑	↑	—	↑
84	↑	↑	↑	↑	↑	92	↑	↑	73	↑	↑	↑	↑	—	↑
90	↑	↑	↑	↑	↑	98	↑	↑	79	↑	↑	↑	↑	—	↑
96	↑	↑	↑	↑	↑	104	↑	↑	85	↑	↑	↑	↑	—	↑
102	↑	↑	↑	↑	↑	110	↑	↑	91	↑	↑	↑	↑	—	↑
108	↑	↑	↑	↑	↑	116	↑	↑	97	↑	↑	↑	↑	—	↑
114	↑	↑	↑	↑	↑	122	↑	↑	103	↑	↑	↑	↑	—	↑
120	3	5	2	4	2-1/8	128	9	5	109	6	8-5/8	13-1/2	3/4	—	3NPT
WC10B()-24	4	6	3	4-3/4	2-7/16	32-13/16	9-7/16	5	13	6	10-3/4	16	3/4	—	3NPT
30	↑	↑	↑	↑	↑	38-13/16	↑	↑	19	↑	↑	↑	↑	—	↑
36	↑	↑	↑	↑	↑	44-13/16	↑	↑	25	↑	↑	↑	↑	—	↑
42	↑	↑	↑	↑	↑	50-13/16	↑	↑	31	↑	↑	↑	↑	—	↑
48	↑	↑	↑	↑	↑	56-13/16	↑	↑	37	↑	↑	↑	↑	—	↑
54	↑	↑	↑	↑	↑	62-13/16	↑	↑	43	↑	↑	↑	↑	—	↑
60	↑	↑	↑	↑	↑	68-13/16	↑	↑	49	↑	↑	↑	↑	—	↑
66	↑	↑	↑	↑	↑	74-13/16	↑	↑	55	↑	↑	↑	↑	—	↑
72	↑	↑	↑	↑	↑	80-13/16	↑	↑	61	↑	↑	↑	↑	—	↑
78	↑	↑	↑	↑	↑	86-13/16	↑	↑	67	↑	↑	↑	↑	—	↑
84	↑	↑	↑	↑	↑	92-13/16	↑	↑	73	↑	↑	↑	↑	—	↑
90	↑	↑	↑	↑	↑	98-13/16	↑	↑	79	↑	↑	↑	↑	—	↑
96	↑	↑	↑	↑	↑	104-13/16	↑	↑	85	↑	↑	↑	↑	—	↑
102	↑	↑	↑	↑	↑	110-13/16	↑	↑	91	↑	↑	↑	↑	—	↑
108	↑	↑	↑	↑	↑	116-13/16	↑	↑	97	↑	↑	↑	↑	—	↑
114	↑	↑	↑	↑	↑	122-13/16	↑	↑	103	↑	↑	↑	↑	—	↑
120	↑	↑	↑	↑	↑	128-13/16	↑	↑	109	↑	↑	↑	↑	—	↑
126	↑	↑	↑	↑	↑	134-13/16	↑	↑	115	↑	↑	↑	↑	—	↑
132	↑	↑	↑	↑	↑	140-13/16	↑	↑	121	↑	↑	↑	↑	—	↑
138	↑	↑	↑	↑	↑	146-13/16	↑	↑	127	↑	↑	↑	↑	—	↑
144	4	6	3	4-3/4	2-7/16	152-13/16	9-7/16	5	133	6	10-3/4	16	3/4	—	3NPT
WC12B()-24	4	8	4	5-5/8	2-3/16	33-15/16	11-3/16	6	11	7	12-3/4	19	3/4	—	3NPT
30	↑	↑	↑	↑	↑	39-15/16	↑	↑	17	↑	↑	↑	↑	—	↑
36	↑	↑	↑	↑	↑	45-15/16	↑	↑	23	↑	↑	↑	↑	—	↑
42	↑	↑	↑	↑	↑	51-15/16	↑	↑	29	↑	↑	↑	↑	—	↑
48	↑	↑	↑	↑	↑	57-15/16	↑	↑	35	↑	↑	↑	↑	—	↑
54	↑	↑	↑	↑	↑	63-15/16	↑	↑	41	↑	↑	↑	↑	—	↑
60	↑	↑	↑	↑	↑	69-15/16	↑	↑	47	↑	↑	↑	↑	—	↑
66	↑	↑	↑	↑	↑	75-15/16	↑	↑	53	↑	↑	↑	↑	—	↑
72	↑	↑	↑	↑	↑	81-15/16	↑	↑	59	↑	↑	↑	↑	—	↑
78	↑	↑	↑	↑	↑	87-15/16	↑	↑	65	↑	↑	↑	↑	—	↑
84	↑	↑	↑	↑	↑	93-15/16	↑	↑	71	↑	↑	↑	↑	—	↑
90	↑	↑	↑	↑	↑	99-15/16	↑	↑	77	↑	↑	↑	↑	—	↑
96	↑	↑	↑	↑	↑	105-15/16	↑	↑	83	↑	↑	↑	↑	—	↑
102	↑	↑	↑	↑	↑	111-15/16	↑	↑	89	↑	↑	↑	↑	—	↑
108	↑	↑	↑	↑	↑	117-15/16	↑	↑	95	↑	↑	↑	↑	—	↑
114	↑	↑	↑	↑	↑	123-15/16	↑	↑	101	↑	↑	↑	↑	—	↑
120	↑	↑	↑	↑	↑	129-15/16	↑	↑	107	↑	↑	↑	↑	—	↑
126	↑	↑	↑	↑	↑	135-15/16	↑	↑	113	↑	↑	↑	↑	—	↑
132	↑	↑	↑	↑	↑	141-15/16	↑	↑	119	↑	↑	↑	↑	—	↑
138	↑	↑	↑	↑	↑	147-15/16	↑	↑	125	↑	↑	↑	↑	—	↑
144	4	8	4	5-5/8	2-3/16	153-15/16	11-3/16	6	131	7	12-3/4	19	3/4	—	3NPT

Units 4" through 8" Diameter 150 PSI Working Pressure Standard, 300 lb. Test Pressure

Units 10" and 12" Diameter 125 PSI W.P. Standards, 250 T.P.
 150 PSI W.P. available upon request

DHT MODEL WC UNIT HAVING THE CAPACITY TO HEAT G.P.M. OF WATER IN THE TUBES
 FROM °F TO °F USING G.P.M. WATER FROM °F TO °F AS THE HEATING MEDIUM IN THE SHELL

MATERIAL SPECIFICATIONS	
PARTS	MATERIALS
HEAD	
SHELL	
TUBE SHEET	
TUBING	
TUBE SUPPORT	
BOLTS & NUTS	
PRESSURE DROP	
HEATING SURF	

JOB _____
 ENGINEER _____
 CONTRACTOR _____
 REP. _____
 DATE _____
 DWG. HE - _____

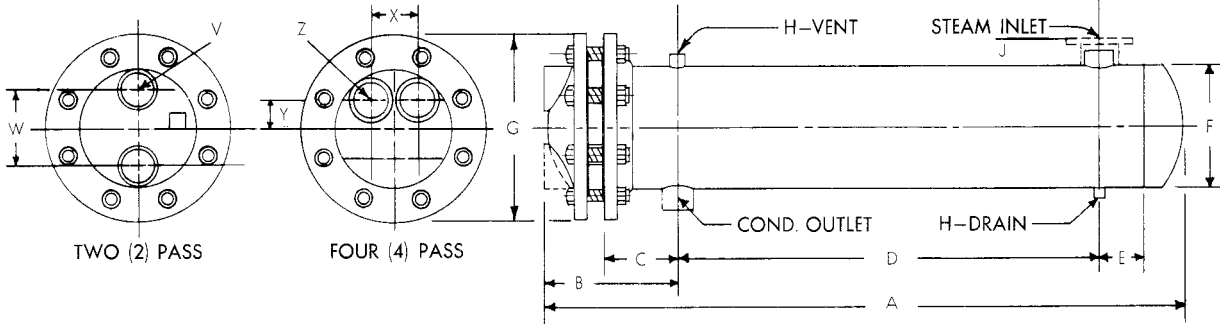


DIVERSIFIED HEAT TRANSFER, INC.

1710 Flushing Avenue • Ridgewood, NY 11385
 Phone: 718-386-6666 / 800-221-1522 • Fax: 718-386-7809
 Manufacturers and Designers Since 1938.

Web Site: <http://www.dhtnet.com>

TYPE "SC" HEAT EXCHANGERS - STANDARD "U" TUBE DESIGN • CAST IRON HEAD



DIMENSIONS: All dimensions are in inches and are subject to change. Where dimensions are needed for layout, write factory for certified prints

Unit	HEAD					SHELL									
	2 Pass		Z	4 Pass		A	B	C	D	E	F	G	H	Steam	Cond.
V	W	X		Y											
SC4B(-)24	1-1/2	2-1/2	1	2-1/8	1	34-1/4	7-3/4	5	20	4	4-1/2	9	3/4	2 NPT	1 NPT
30	↑	↑	↑	↑	↑	40-1/4	↑	↑	26	↑	↑	↑	↑	↑	↑
36	↑	↑	↑	↑	↑	46-1/4	↑	↑	32	↑	↑	↑	↑	↑	↑
42	↑	↑	↑	↑	↑	52-1/4	↑	↑	38	↑	↑	↑	↑	↑	↑
48	↑	↑	↑	↑	↑	58-1/4	↑	↑	44	↑	↑	↑	↑	↑	↑
54	↑	↑	↑	↑	↑	64-1/4	↑	↑	50	↑	↑	↑	↑	2 NPT	1 NPT
60	↑	↑	↑	↑	↑	70-1/4	↑	↑	56	↑	↑	↑	↑	2-1/2NPT	1-1/4NPT
66	↑	↑	↑	↑	↑	76-1/4	↑	↑	62	↑	↑	↑	↑	↑	↑
72	↑	↑	↑	↑	↑	82-1/4	↑	↑	68	↑	↑	↑	↑	↑	↑
78	↑	↑	↑	↑	↑	88-1/4	↑	↑	74	↑	↑	↑	↑	↑	↑
84	↑	↑	↑	↑	↑	94-1/4	↑	↑	80	↑	↑	↑	↑	↑	↑
90	↑	↑	↑	↑	↑	100-1/4	↑	↑	86	↑	↑	↑	↑	↑	↑
96	1-1/2	2-1/2	1	2-1/8	1	106-1/4	7-3/4	5	92	4	4-1/2	9	3/4	2-1/2NPT	1-1/4NPT
SC5B(-)24	2	3	1-1/4	2-3/8	1-3/16	35-1/8	8-1/8	5	20	4	5-9/16	10	3/4	2 NPT	1-1/2NPT
30	↑	↑	↑	↑	↑	41-1/8	↑	↑	26	↑	↑	↑	↑	↑	↑
36	↑	↑	↑	↑	↑	47-1/8	↑	↑	32	↑	↑	↑	↑	↑	↑
42	↑	↑	↑	↑	↑	53-1/8	↑	↑	38	↑	↑	↑	↑	2 NPT	↑
48	↑	↑	↑	↑	↑	59-1/8	↑	↑	44	↑	↑	↑	↑	3 NPT	↑
54	↑	↑	↑	↑	↑	65-1/8	↑	↑	50	↑	↑	↑	↑	↑	↑
60	↑	↑	↑	↑	↑	71-1/8	↑	↑	56	↑	↑	↑	↑	↑	↑
66	↑	↑	↑	↑	↑	77-1/8	↑	↑	62	↑	↑	↑	↑	↑	↑
72	↑	↑	↑	↑	↑	83-1/8	↑	↑	68	↑	↑	↑	↑	↑	↑
78	↑	↑	↑	↑	↑	89-1/8	↑	↑	74	↑	↑	↑	↑	↑	↑
84	↑	↑	↑	↑	↑	95-1/8	↑	↑	80	↑	↑	↑	↑	↑	↑
90	↑	↑	↑	↑	↑	101-1/8	↑	↑	86	↑	↑	↑	↑	↑	↑
96	2	3	1-1/4	2-3/8	1-3/16	107-1/8	8-1/8	5	92	4	5-9/16	10	3/4	3 NPT	1-1/2NPT
SC6B(-)24	2-1/2	4	1-1/2	3	1-1/2	35-7/8	8-3/8	5	20	4	6-5/8	11	3/4	3 NPT	1-1/2NPT
30	↑	↑	↑	↑	↑	41-7/8	↑	↑	26	↑	↑	↑	↑	↑	↑
36	↑	↑	↑	↑	↑	47-7/8	↑	↑	32	↑	↑	↑	↑	↑	↑
42	↑	↑	↑	↑	↑	53-7/8	↑	↑	38	↑	↑	↑	↑	↑	↑
48	↑	↑	↑	↑	↑	59-7/8	↑	↑	44	↑	↑	↑	↑	↑	↑
54	↑	↑	↑	↑	↑	65-7/8	↑	↑	50	↑	↑	↑	↑	↑	↑
60	↑	↑	↑	↑	↑	71-7/8	↑	↑	56	↑	↑	↑	↑	↑	↑
66	↑	↑	↑	↑	↑	77-7/8	↑	↑	62	↑	↑	↑	↑	↑	↑
72	↑	↑	↑	↑	↑	83-7/8	↑	↑	68	↑	↑	↑	↑	↑	↑
78	↑	↑	↑	↑	↑	89-7/8	↑	↑	74	↑	↑	↑	↑	↑	↑
84	↑	↑	↑	↑	↑	95-7/8	↑	↑	80	↑	↑	↑	↑	↑	↑
90	↑	↑	↑	↑	↑	101-7/8	↑	↑	86	↑	↑	↑	↑	↑	↑
96	↑	↑	↑	↑	↑	107-7/8	↑	↑	92	↑	↑	↑	↑	↑	↑
102	↑	↑	↑	↑	↑	113-7/8	↑	↑	98	↑	↑	↑	↑	↑	↑
108	↑	↑	↑	↑	↑	119-7/8	↑	↑	104	↑	↑	↑	↑	↑	↑
114	↑	↑	↑	↑	↑	125-7/8	↑	↑	110	↑	↑	↑	↑	↑	↑
120	2-1/2	4	1-1/2	3	1-1/2	131-7/8	8-3/8	5	116	4	6-5/8	11	3/4	3 NPT	1-1/2NPT



DIVERSIFIED HEAT TRANSFER, INC.

1710 Flushing Avenue • Ridgewood, NY 11385
 Phone: 718-386-6666 / 800-221-1522 • Fax: 718-386-7809
 Manufacturers and Designers Since 1938.

Web Site: <http://www.dhtnet.com>

TYPE "SC" HEAT EXCHANGERS - STANDARD "U" TUBE DESIGN • CAST IRON HEAD

Unit	HEAD					SHELL										
	2 Pass		4 Pass			A	B	C	D	E	F	G	H	J	Steam	Cond.
	V	W	Z	X	Y											
SC8B()-24	3	5	2	4	2-1/8	40	9	5	21	6	8-5/8	13-1/2	3/4	5	4 FLG	1-1/2NPT
30	↑	↑	↑	↑	↑	46	↑	↑	27	↑	↑	↑	↑	↑	↓	↓
36	↑	↑	↑	↑	↑	52	↑	↑	33	↑	↑	↑	↑	↑	4 FLG	1-1/2NPT
42	↑	↑	↑	↑	↑	58	↑	↑	39	↑	↑	↑	↑	↑	6 FLG	2 NPT
48	↑	↑	↑	↑	↑	64	↑	↑	45	↑	↑	↑	↑	↑	↑	↑
54	↑	↑	↑	↑	↑	70	↑	↑	51	↑	↑	↑	↑	↑	↑	↑
60	↑	↑	↑	↑	↑	76	↑	↑	57	↑	↑	↑	↑	↑	↑	↑
66	↑	↑	↑	↑	↑	82	↑	↑	63	↑	↑	↑	↑	↑	↑	↑
72	↑	↑	↑	↑	↑	88	↑	↑	69	↑	↑	↑	↑	↑	↑	↑
78	↑	↑	↑	↑	↑	94	↑	↑	75	↑	↑	↑	↑	↑	↑	↑
84	↑	↑	↑	↑	↑	100	↑	↑	81	↑	↑	↑	↑	↑	↑	↑
90	↑	↑	↑	↑	↑	106	↑	↑	87	↑	↑	↑	↑	↑	↑	↑
96	↑	↑	↑	↑	↑	112	↑	↑	93	↑	↑	↑	↑	↑	↑	↑
102	↑	↑	↑	↑	↑	118	↑	↑	99	↑	↑	↑	↑	↑	↑	↑
108	↑	↑	↑	↑	↑	124	↑	↑	105	↑	↑	↑	↑	↑	↑	↑
114	↑	↑	↑	↑	↑	130	↑	↑	111	↑	↑	↑	↑	↑	↑	↑
120	3	5	2	4	2-1/8	136	9	5	117	6	8-5/8	13-1/2	3/4	5	6 FLG	2 NPT
SC10B()-24	4	6	3	4-3/4	2-7/16	39-13/16	9-7/16	5	20	6	10-3/4	16	3/4	5	4 FLG	1-1/2NPT
30	↑	↑	↑	↑	↑	45-13/16	↑	↑	26	↑	↑	↑	↑	↑	↓	↓
36	↑	↑	↑	↑	↑	51-13/16	↑	↑	32	↑	↑	↑	↑	↑	4 FLG	1-1/2NPT
42	↑	↑	↑	↑	↑	57-13/16	↑	↑	38	↑	↑	↑	↑	↑	6 FLG	2 NPT
48	↑	↑	↑	↑	↑	63-13/16	↑	↑	44	↑	↑	↑	↑	↑	↑	↑
54	↑	↑	↑	↑	↑	69-13/16	↑	↑	50	↑	↑	↑	↑	↑	↑	↑
60	↑	↑	↑	↑	↑	75-13/16	↑	↑	56	↑	↑	↑	↑	↑	↑	↑
66	↑	↑	↑	↑	↑	81-13/16	↑	↑	62	↑	↑	↑	↑	↑	↑	↑
72	↑	↑	↑	↑	↑	87-13/16	↑	↑	68	↑	↑	↑	↑	↑	↑	↑
78	↑	↑	↑	↑	↑	93-13/16	↑	↑	74	↑	↑	↑	↑	↑	↑	↑
84	↑	↑	↑	↑	↑	99-13/16	↑	↑	80	↑	↑	↑	↑	↑	↑	↑
90	↑	↑	↑	↑	↑	105-13/16	↑	↑	86	↑	↑	↑	↑	↑	↑	↑
96	↑	↑	↑	↑	↑	111-13/16	↑	↑	92	↑	↑	↑	↑	↑	↑	↑
102	↑	↑	↑	↑	↑	117-13/16	↑	↑	98	↑	↑	↑	↑	↑	↑	↑
108	↑	↑	↑	↑	↑	123-13/16	↑	↑	104	↑	↑	↑	↑	↑	↑	↑
114	↑	↑	↑	↑	↑	129-13/16	↑	↑	110	↑	↑	↑	↑	↑	↑	↑
120	↑	↑	↑	↑	↑	135-13/16	↑	↑	116	↑	↑	↑	↑	↑	↑	↑
126	↑	↑	↑	↑	↑	141-13/16	↑	↑	122	↑	↑	↑	↑	↑	↑	↑
132	↑	↑	↑	↑	↑	147-13/16	↑	↑	128	↑	↑	↑	↑	↑	↑	↑
138	↑	↑	↑	↑	↑	153-13/16	↑	↑	134	↑	↑	↑	↑	↑	↑	↑
144	4	6	3	4-3/4	2-7/16	159-13/16	9-7/16	5	140	6	10-3/4	16	3/4	5	6 FLG	2 NPT
SC12B()-24	4	8	4	5-5/8	2-13/16	41-5/16	11-3/16	6	19	7	12-3/4	19	3/4	5	6 FLG	2 NPT
30	↑	↑	↑	↑	↑	47-5/16	↑	↑	25	↑	↑	↑	↑	↑	↓	↓
36	↑	↑	↑	↑	↑	53-5/16	↑	↑	31	↑	↑	↑	↑	↑	↑	↑
42	↑	↑	↑	↑	↑	59-5/16	↑	↑	37	↑	↑	↑	↑	↑	↑	↑
48	↑	↑	↑	↑	↑	65-5/16	↑	↑	43	↑	↑	↑	↑	↑	↑	↑
54	↑	↑	↑	↑	↑	71-5/16	↑	↑	49	↑	↑	↑	↑	↑	↑	↑
60	↑	↑	↑	↑	↑	77-5/16	↑	↑	55	↑	↑	↑	↑	↑	↑	↑
66	↑	↑	↑	↑	↑	83-5/16	↑	↑	61	↑	↑	↑	↑	↑	↑	↑
72	↑	↑	↑	↑	↑	89-5/16	↑	↑	67	↑	↑	↑	↑	↑	↑	↑
78	↑	↑	↑	↑	↑	95-5/16	↑	↑	73	↑	↑	↑	↑	↑	↑	↑
84	↑	↑	↑	↑	↑	101-5/16	↑	↑	79	↑	↑	↑	↑	↑	↑	↑
90	↑	↑	↑	↑	↑	107-5/16	↑	↑	85	↑	↑	↑	↑	↑	↑	↑
96	↑	↑	↑	↑	↑	113-5/16	↑	↑	91	↑	↑	↑	↑	↑	↑	↑
102	↑	↑	↑	↑	↑	119-5/16	↑	↑	97	↑	↑	↑	↑	↑	↑	↑
108	↑	↑	↑	↑	↑	125-5/16	↑	↑	103	↑	↑	↑	↑	↑	↑	↑
114	↑	↑	↑	↑	↑	131-5/16	↑	↑	109	↑	↑	↑	↑	↑	↑	↑
120	↑	↑	↑	↑	↑	137-5/16	↑	↑	115	↑	↑	↑	↑	↑	↑	↑
126	↑	↑	↑	↑	↑	143-5/16	↑	↑	121	↑	↑	↑	↑	↑	↑	↑
132	↑	↑	↑	↑	↑	149-5/16	↑	↑	127	↑	↑	↑	↑	↑	↑	↑
138	↑	↑	↑	↑	↑	155-5/16	↑	↑	133	↑	↑	↑	↑	↑	↑	↑
144	4	8	4	5-5/8	2-13/16	161-5/16	11-3/16	6	139	7	12-3/4	19	3/4	5	8 FLG	2-1/2NPT

Units 4" through 8" Diameter 150 PSI Working Pressure Standard, 300 lb. Test Pressure

Units 10" and 12" Diameter 125 PSI W.P. Standards, 250 T.P.
 150 PSI W.P. available upon request

DHT MODEL SC UNIT HAVING THE CAPACITY TO HEAT G.P.M. OF WATER IN THE TUBES
 FROM °F TO °F USING P.S.I.G STEAM AS THE HEATING MEDIUM IN THE SHELL

MATERIAL SPECIFICATIONS	
PARTS	MATERIALS
HEAD	
SHELL	
TUBE SHEET	
TUBING	
TUBE SUPPORT	
BOLTS & NUTS	
PRESSURE DROP	
HEATING SURF	

JOB _____
 ENGINEER _____
 CONTRACTOR _____
 REP. _____
 DATE _____
 DWG. HE - _____

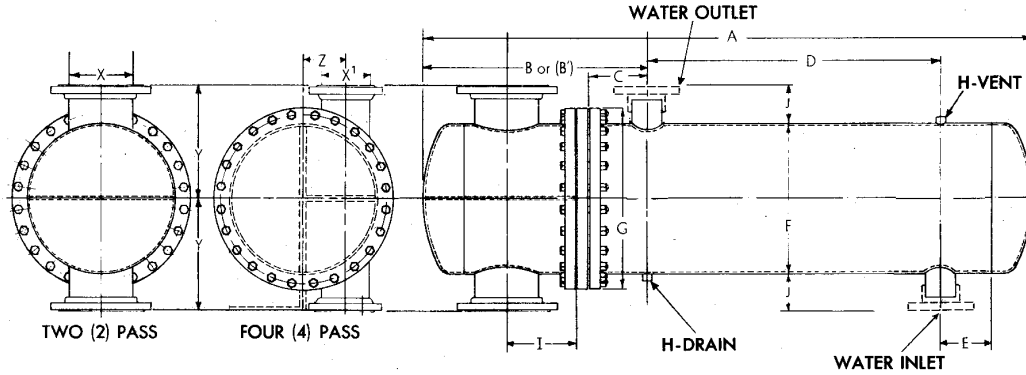


DIVERSIFIED HEAT TRANSFER, INC.

1710 Flushing Avenue • Ridgewood, NY 11385
 Phone: 718-386-6666 / 800-221-1522 • Fax: 718-386-7809
 Manufacturers and Designers Since 1938.

Web Site: <http://www.dhtnet.com>

TYPE "WC" HEAT EXCHANGERS - STANDARD "U" TUBE DESIGN • BONNET HEAD



NOTE: Units also furnished in 6" increments:
 Dimensions (A) and (D) increase 6"

DIMENSIONS: All dimensions are in inches and are subject to change. Where dimensions are needed for layout, write factory for certified prints

Unit	HEAD							SHELL								Inlet & Outlet
	2 Pass		4 Pass			Y	I	A	C	D	E	F	G	H (NPT)	J	
X	B	X ¹	B ^{1*}	Z	A											C
WC10B()-24	4 FLG	15-5/16	—	—	—	10	5-1/8	38-11/16	5	13	6	10-3/4	14-3/8	3/4	—	3 NPT
36	↑	↑				↑	↑	50-11/16	↑	25	↑	↑	↑	↑		↑
48								62-11/16		37						
60								74-11/16		49						
72								86-11/16		61						
84								98-11/16		73						
96								110-11/16		85						
108								122-11/16		97						
120								134-11/16		109						
132								146-11/16		121						
144	4 FLG	15-5/16	—	—	—	10	5-1/8	158-11/16	5	133	6	10-3/4	14-3/8	3/4	—	3 NPT
WC12B()-24	5 FLG	18-1/2	4 FLG	16-5/8	3	11	5-3/4	41-1/4	6	11	7	12-3/4	17	3/4	—	3 NPT
36	↑	↑	↑	↑	↑	↑	↑	53-1/4	↑	23	↑	↑	↑	↑		↑
48								65-1/4		35						
60								77-1/4		47						
72								89-1/4		59						
84								101-1/4		71						
96								113-1/4		83						
108								125-1/4		95						
120								137-1/4		107						
132								149-1/4		119						
144	5 FLG	18-1/2	4 FLG	16-5/8	3	11	5-3/4	161-1/4	6	131	7	12-3/4	17	3/4	—	3 NPT
WC14B()-24	6 FLG	18-5/16	4 FLG	16-7/8	3	11-1/2	6-3/8	41-15/16	6	11	7	14	19	3/4	5	4 FLG
36	↑	↑	↑	↑	↑	↑	↑	53-15/16	↑	23	↑	↑	↑	↑	↑	↑
48								65-15/16		35						
60								77-15/16		47						
72								89-15/16		59						
84								101-15/16		71						
96								113-15/16		83						
108								125-15/16		95						
120								137-15/16		107						
132								149-15/16		119						
144	6 FLG	18-5/16	4 FLG	16-7/8	3	11-1/2	6-3/8	161-15/16	6	131	7	14	19	3/4	5	4 FLG

Units 10" through 24" and larger Flanged, 150 PSI Working Pressure, 300 lb. Test Pressure
 * "A" Dimension will change according to "B1".

Last two digits of unit # required for coil pull



DIVERSIFIED HEAT TRANSFER, INC.

1710 Flushing Avenue • Ridgewood, NY 11385
 Phone: 718-386-6666 / 800-221-1522 • Fax: 718-386-7809
 Manufacturers and Designers Since 1938.

Web Site: <http://www.dhtnet.com>

TYPE "WC" HEAT EXCHANGERS - STANDARD "U" TUBE DESIGN • BONNET HEAD

Unit	HEAD							SHELL								
	2 Pass		4 Pass					A	C	D	E	F	G	H (NPT)	J	Inlet & Outlet
	X	B	X ¹	B ^{1*}	Z	Y	I									
WC16B()-24 36 48 60 72 84 96 108 120 132 144	6 FLG ↑ 6 FLG	19 ↑ 19	4 FLG ↑ 4 FLG	16-15/16 ↑ 16-15/16	3 ↑ 3	12-1/2 ↑ 12-1/2	6-1/2 ↑ 6-1/2	42-1/2 54-1/2 66-1/2 78-1/2 90-1/2 102-1/2 114-1/2 126-1/2 138-1/2 150-1/2 162-1/2	6 ↑ 6	10 22 34 46 58 70 82 94 106 118	8 ↑ 8	16 ↑ 16	20-3/8 ↑ 20-3/8	3/4 ↑ 3/4	5 ↑ 5	4 FLG ↑ 4 FLG
WC18B()-24 36 48 60 72 84 96 108 120 132 144	8 FLG ↑ 8 FLG	21-7/8 ↑ 21-7/8	5 FLG ↑ 5 FLG	18-1/16 ↑ 18-1/16	3-1/2 ↑ 3-1/2	13-1/2 ↑ 13-1/2	8 ↑ 8	45-3/4 57-3/4 69-3/4 81-3/4 93-3/4 105-3/4 117-3/4 129-3/4 141-3/4 153-3/4 165-3/4	6 ↑ 6	10 22 34 46 58 70 82 94 106 118 130	8 ↑ 8	18 ↑ 18	22-3/8 ↑ 22-3/8	3/4 ↑ 3/4	5 ↑ 5	4 FLG ↑ 4 FLG
WC20B()-24 36 48 60 72 84 96 108 120 132 144	8 FLG ↑ 8 FLG	24-15/16 ↑ 24-15/16	6 FLG ↑ 6 FLG	20-3/4 ↑ 20-3/4	4 ↑ 4	14-1/2 ↑ 14-1/2	8 ↑ 8	48-3/16 60-3/16 72-3/16 84-3/16 96-3/16 108-3/16 120-3/16 132-3/16 144-3/16 156-3/16 168-3/16	7 ↑ 7	7 19 31 43 55 67 79 91 103 115 127	10 ↑ 10	20 ↑ 20	24-3/8 ↑ 24-3/8	3/4 ↑ 3/4	5 ↑ 5	6 FLG ↑ 6 FLG
WC22B()-24 36 48 60 72 84 96 108 120 132 144	10 FLG ↑ 10 FLG	26-7/8 ↑ 26-7/8	8 FLG ↑ 8 FLG	24-1/4 ↑ 24-1/4	5 ↑ 5	15-1/2 ↑ 15-1/2	9-1/2 ↑ 9-1/2	49-1/2 61-1/2 73-1/2 85-1/2 97-1/2 109-1/2 121-1/2 133-1/2 145-1/2 157-1/2 169-1/2	8 ↑ 8	6 18 30 42 54 66 78 90 102 114 126	10 ↑ 10	22 ↑ 22	24-3/8 ↑ 24-3/8	3/4 ↑ 3/4	5 ↑ 5	6 FLG ↑ 6 FLG
WC24B()-24 36 48 60 72 84 96 108 120 132 144	10 FLG ↑ 10 FLG	27-3/8 ↑ 27-3/8	8 FLG ↑ 8 FLG	24-3/8 ↑ 24-3/8	5 ↑ 5	16-1/2 ↑ 16-1/2	9-1/2 ↑ 9-1/2	50-1/2 62-1/2 74-1/2 86-1/2 98-1/2 110-1/2 122-1/2 134-1/2 146-1/2 158-1/2 170-1/2	8 ↑ 8	6 18 30 42 54 66 78 90 102 114 126	10 ↑ 10	24 ↑ 24	28-3/8 ↑ 28-3/8	3/4 ↑ 3/4	5 ↑ 5	6 FLG ↑ 6 FLG

Units 10" through 24" and larger Flanged, 150 PSI Working Pressure, 300 lb. Test Pressure

Last Two Digits Of Unit # Required For Coil Pull

* "A" Dimension will change accordingly with B¹.

DHT MODEL WC UNIT HAVING THE CAPACITY TO HEAT G.P.M. OF WATER IN THE TUBES
 FROM °F TO °F USING G.P.M. WATER FROM °F TO °F AS THE HEATING MEDIUM IN THE SHELL

MATERIAL SPECIFICATIONS	
PARTS	MATERIALS
HEAD	
SHELL	
TUBE SHEET	
TUBING	
TUBE SUPPORT	
BOLTS & NUTS	
PRESSURE DROP	
HEATING SURF	

JOB _____
 ENGINEER _____
 CONTRACTOR _____
 REP. _____
 DATE _____
 DWG. HE - _____

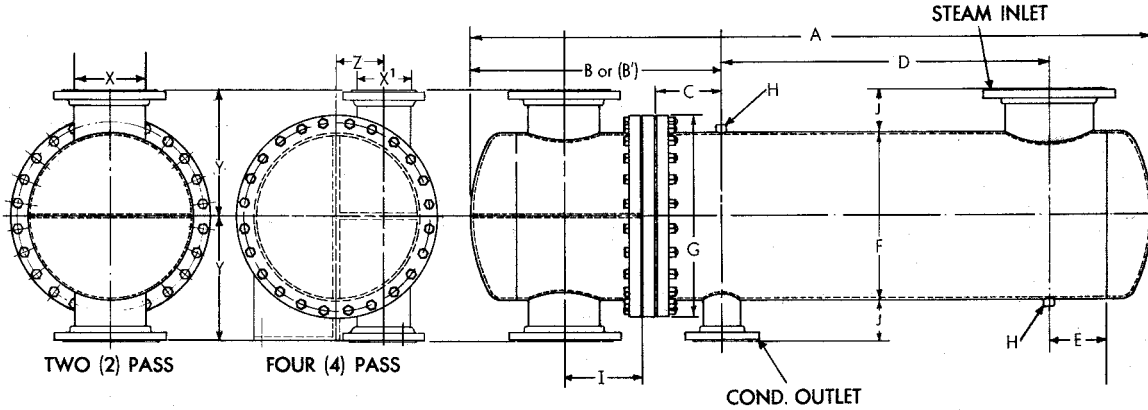


DIVERSIFIED HEAT TRANSFER, INC.

1710 Flushing Avenue • Ridgewood, NY 11385
 Phone: 718-386-6666 / 800-221-1522 • Fax: 718-386-7809
 Manufacturers and Designers Since 1938.

Web Site: <http://www.dhtnet.com>

TYPE "SC" HEAT EXCHANGERS - STANDARD "U" TUBE DESIGN • BONNET HEAD



NOTE: Units also furnished in 6" increments:
 Dimensions (A) and (D) increase 6"

DIMENSIONS: All dimensions are in inches and are subject to change. Where dimensions are needed for layout, write factory for certified prints

Unit	HEAD								SHELL										
	2 Pass				4 Pass				B ¹ *	A	C	D	E	F	G	H	J	Steam	Cond.
	X	Y	I	B	X ¹	Y	Z												
SC10B()-24	4 FLG	10	5-1/8	15-5/16					45-11/16	5	20	6	10-3/4	14-3/8	3/4	5	4 FLG	1-1/2NPT	
36	↑	↑	↑	↑					57-11/16	↑	32	↑	↑	↑	↑		4 FLG	1-1/2NPT	
48									69-11/16		44						6 FLG	2 NPT	
60									81-11/16		56								
72									93-11/16		68								
84									105-11/16		80								
96									117-11/16		92								
108									129-11/16		104								
120									141-11/16		116								
132									153-11/16		128								
144	4 FLG	10	5-1/8	15-5/16					165-11/16	5	140	6	10-3/4	14-3/8	3/4	5	6 FLG	2 NPT	
SC12B()-24	5 FLG	11	5-3/4	18-1/2	4 FLG	11	3	16-5/8	49-1/4	6	19	7	12-3/4	17	3/4	5	6 FLG	2 NPT	
36	↑	↑	↑	↑	↑	↑	↑	↑	61-1/4	↑	31	↑	↑	↑	↑				
48									73-1/4		43								
60									85-1/4		55								
72									97-1/4		67						6 FLG	2 NPT	
84									109-1/4		79						8 FLG	2-1/2NPT	
96									121-1/4		91								
108									133-1/4		103								
120									145-1/4		115								
132									157-1/4		127								
144	5 FLG	11	5-3/4	18-1/2	4 FLG	11	3	16-5/8	169-1/4	6	139	7	12-3/4	17	3/4	5	8 FLG	2-1/2NPT	
SC14B()-24	6 FLG	11-1/2	6-3/8	18-15/16	4 FLG	11-1/2	3	16-7/8	49-15/16	6	19	7	14	19	3/4	5	6 FLG	2 NPT	
36	↑	↑	↑	↑	↑	↑	↑	↑	61-15/16	↑	31	↑	↑	↑	↑				
48									73-15/16		43								
60									85-15/16		55								
72									97-15/16		67						6 FLG	2 NPT	
84									109-15/16		79						8 FLG	2-1/2NPT	
96									121-15/16		91								
108									133-15/16		103								
120									145-15/16		115								
132									157-15/16		127								
144	6 FLG	11-1/2	6-3/8	18-15/16	4 FLG	11-1/2	3	16-7/8	169-15/16	6	139	7	14	19	3/4	5	8 FLG	2-1/2NPT	

Units 10" through 24" and larger Flanged, 150 PSI Working Pressure, 300 lb. Test Pressure
 **"A" Dimension will change according to "B¹"

Last two digets of unit # required for coil pull
 (I) Same on both 2 and 4 Pass



DIVERSIFIED HEAT TRANSFER, INC.

1710 Flushing Avenue • Ridgewood, NY 11385
 Phone: 718-386-6666 / 800-221-1522 • Fax: 718-386-7809
 Manufacturers and Designers Since 1938.

Web Site: <http://www.dhtnet.com>

TYPE "SC" HEAT EXCHANGERS - STANDARD "U" TUBE DESIGN • BONNET HEAD

Unit	HEAD								SHELL										
	2 Pass				4 Pass				A	C	D	E	F	G	H	J	Steam	Cond.	
	X	Y	I	B	X ¹	Y	Z	B ¹ *											
SC168(I)-24 36 48 60 72 84 96 108 120 132 144	6 FLG ↑ 6 FLG	12-1/2 ↑ 12-1/2	6-1/2 ↑ 6-1/2	19 ↑ 19	4 FLG ↑ 4 FLG	12-1/2 ↑ 12-1/2	3 ↑ 3	16-15/16 ↑ 16-15/16	51-1/2 63-1/2 75-1/2 87-1/2 99-1/2 111-1/2 123-1/2 135-1/2 147-1/2 159-1/2 171-1/2	6 ↑ 6	19 31 43 54 66 79 91 103 115 127 139	8 ↑ 8	16 ↑ 16	20-3/8 ↑ 20-3/8	3/4 ↑ 3/4	5 ↑ 5	8 FLG ↑ 8 FLG	2-1/2NPT ↑ 2-1/2NPT	
SC188(I)-24 36 48 60 72 84 96 108 120 132 144	8 FLG ↑ 8 FLG	13-1/2 ↑ 13-1/2	8 ↑ 8	21-7/8 ↑ 21-7/8	5 FLG ↑ 5 FLG	13-1/2 ↑ 13-1/2	3-1/2 ↑ 3-1/2	18-1/16 ↑ 18-1/16	53-3/4 65-3/4 77-3/4 89-3/4 101-3/4 113-3/4 125-3/4 137-3/4 149-3/4 161-3/4 173-3/4	6 ↑ 6	18 30 42 54 66 78 90 102 114 120 138	8 ↑ 8	18 ↑ 18	22-3/8 ↑ 22-3/8	3/4 ↑ 3/4	5 ↑ 5	10 FLG ↑ 10 FLG	3 NPT ↑ 3 NPT	
SC208(I)-24 36 48 60 72 84 96 108 120 132 144	8 FLG ↑ 8 FLG	14-1/2 ↑ 14-1/2	8 ↑ 8	24-15/16 ↑ 24-15/16	6 FLG ↑ 6 FLG	14-1/2 ↑ 14-1/2	4 ↑ 4	20-3/4 ↑ 20-3/4	59-3/16 71-3/16 83-3/16 95-3/16 107-3/16 119-3/16 131-3/16 143-3/16 155-3/16 167-3/16 179-3/16	7 ↑ 7	18 30 42 54 66 78 90 102 114 126 138	10 ↑ 10	20 ↑ 20	24-3/8 ↑ 24-3/8	3/4 ↑ 3/4	5 ↑ 5	12 FLG ↑ 12 FLG	4 FLG ↑ 4 FLG	
SC228(I)-24 36 48 60 72 84 96 108 120 132 144	10 FLG ↑ 10 FLG	15-1/2 ↑ 15-1/2	9-1/2 ↑ 9-1/2	26-7/8 ↑ 26-7/8	8 FLG ↑ 8 FLG	15-1/2 ↑ 15-1/2	5 ↑ 5	24-1/4 ↑ 24-1/4	59-1/2 71-1/2 83-1/2 95-1/2 107-1/2 119-1/2 131-1/2 143-1/2 155-1/2 167-1/2 179-1/2	8 ↑ 8	16 28 40 52 64 76 88 100 112 124 136	10 ↑ 10	22 ↑ 22	24-3/8 ↑ 24-3/8	3/4 ↑ 3/4	5 ↑ 5	12 FLG ↑ 12 FLG	6 FLG ↑ 6 FLG	
SC248(I)-24 36 48 60 72 84 96 108 120 132 144	10 FLG ↑ 10 FLG	16-1/2 ↑ 16-1/2	9-1/2 ↑ 9-1/2	27-3/8 ↑ 27-3/8	8 FLG ↑ 8 FLG	16-1/2 ↑ 16-1/2	5 ↑ 5	24-3/8 ↑ 24-3/8	60-1/2 72-1/2 84-1/2 96-1/2 108-1/2 120-1/2 132-1/2 144-1/2 156-1/2 168-1/2 180-1/2	8 ↑ 8	16 28 40 52 64 76 88 100 112 124 136	10 ↑ 10	24 ↑ 24	28-3/8 ↑ 28-3/8	3/4 ↑ 3/4	5 ↑ 5	12 FLG ↑ 12 FLG	6 FLG ↑ 6 FLG	

Units 10" through 24" and larger Flanged, 150 PSI Working Pressure, 300 lb. Test Pressure

* See front

DHT MODEL SC- UNIT HAVING THE CAPACITY TO HEAT G.P.M. OF WATER IN THE TUBES
 FROM °F. TO °F. USING P.S.I.G. STEAM AS THE HEATING MEDIUM IN THE SHELL.

MATERIAL SPECIFICATIONS	
PARTS	MATERIALS
HEAD	
SHELL	
TUBE SHEET	
TUBING	
TUBE SUPPORT	
BOLTS & NUTS	
PRESSURE DROP	
HEATING SURF	

JOB _____
 ENGINEER _____
 CONTRACTOR _____
 REP. _____
 DATE _____
 DWG. HE - _____