



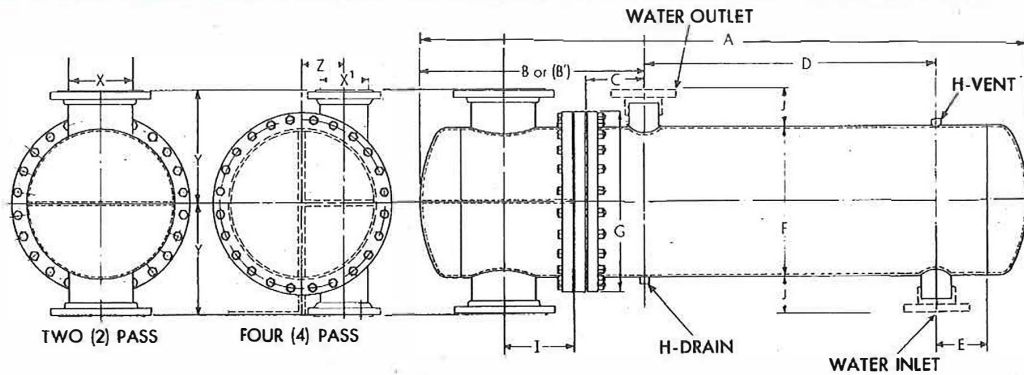
DIVERSIFIED HEAT TRANSFER, INC.

Manufacturers and Designers Since 1938.

Phone: 800-221-1522 / 718-386-6666 • Fax: 718-386-7809

www.dhtnet.com • www.dhtcoils.com

TYPE "WC" HEAT EXCHANGERS - STANDARD "U" TUBE DESIGN • BONNET HEAD



NOTE: Units also furnished in 6" increments:
Dimensions (A) and (D) increase 6"

DIMENSIONS: All dimensions are in inches and are subject to change. Where dimensions are needed for layout, write factory for certified prints

Unit	HEAD							SHELL							Inlet & Outlet	
	2 Pass		X ¹	4 Pass		Y	I	A	C	D	E	F	G	H (NPT)		J
X	B	B ^{1*}		Z												
WC10B()-24	4 FLG	15-5/16	—	—	—	10	5-1/8	38-11/16	5	13	6	10-3/4	14-3/8	3/4	—	3 NPT
36	↑	↑				↑	↑	50-11/16	↑	25	↑	↑	↑	↑		↑
48	↑	↑				↑	↑	62-11/16	↑	37	↑	↑	↑	↑		↑
60	↑	↑				↑	↑	74-11/16	↑	49	↑	↑	↑	↑		↑
72	↑	↑				↑	↑	86-11/16	↑	61	↑	↑	↑	↑		↑
84	↑	↑				↑	↑	98-11/16	↑	73	↑	↑	↑	↑		↑
96	↑	↑				↑	↑	110-11/16	↑	85	↑	↑	↑	↑		↑
108	↑	↑				↑	↑	122-11/16	↑	97	↑	↑	↑	↑		↑
120	↑	↑				↑	↑	134-11/16	↑	109	↑	↑	↑	↑		↑
132	↑	↑				↑	↑	146-11/16	↑	121	↑	↑	↑	↑		↑
144	4 FLG	15-5/16	—	—	—	10	5-1/8	158-11/16	5	133	6	10-3/4	14-3/8	3/4	—	3 NPT
WC12B()-24	5 FLG	18-1/2	4 FLG	16-5/8	3	11	5-3/4	41-1/4	6	11	7	12-3/4	17	3/4	—	3 NPT
36	↑	↑	↑	↑	↑	↑	↑	53-1/4	↑	23	↑	↑	↑	↑		↑
48	↑	↑	↑	↑	↑	↑	↑	65-1/4	↑	35	↑	↑	↑	↑		↑
60	↑	↑	↑	↑	↑	↑	↑	77-1/4	↑	47	↑	↑	↑	↑		↑
72	↑	↑	↑	↑	↑	↑	↑	89-1/4	↑	59	↑	↑	↑	↑		↑
84	↑	↑	↑	↑	↑	↑	↑	101-1/4	↑	71	↑	↑	↑	↑		↑
96	↑	↑	↑	↑	↑	↑	↑	113-1/4	↑	83	↑	↑	↑	↑		↑
108	↑	↑	↑	↑	↑	↑	↑	125-1/4	↑	95	↑	↑	↑	↑		↑
120	↑	↑	↑	↑	↑	↑	↑	137-1/4	↑	107	↑	↑	↑	↑		↑
132	↑	↑	↑	↑	↑	↑	↑	149-1/4	↑	119	↑	↑	↑	↑		↑
144	5 FLG	18-1/2	4 FLG	16-5/8	3	11	5-3/4	161-1/4	6	131	7	12-3/4	17	3/4	—	3 NPT
WC14B()-24	6 FLG	18-5/16	4 FLG	16-7/8	3	11-1/2	6-3/8	41-15/16	6	11	7	14	19	3/4	5	4 FLG
36	↑	↑	↑	↑	↑	↑	↑	53-15/16	↑	23	↑	↑	↑	↑	↑	↑
48	↑	↑	↑	↑	↑	↑	↑	65-15/16	↑	35	↑	↑	↑	↑	↑	↑
60	↑	↑	↑	↑	↑	↑	↑	77-15/16	↑	47	↑	↑	↑	↑	↑	↑
72	↑	↑	↑	↑	↑	↑	↑	89-15/16	↑	59	↑	↑	↑	↑	↑	↑
84	↑	↑	↑	↑	↑	↑	↑	101-15/16	↑	71	↑	↑	↑	↑	↑	↑
96	↑	↑	↑	↑	↑	↑	↑	113-15/16	↑	83	↑	↑	↑	↑	↑	↑
108	↑	↑	↑	↑	↑	↑	↑	125-15/16	↑	95	↑	↑	↑	↑	↑	↑
120	↑	↑	↑	↑	↑	↑	↑	137-15/16	↑	107	↑	↑	↑	↑	↑	↑
132	↑	↑	↑	↑	↑	↑	↑	149-15/16	↑	119	↑	↑	↑	↑	↑	↑
144	6 FLG	18-5/16	4 FLG	16-7/8	3	11-1/2	6-3/8	161-15/16	6	131	7	14	19	3/4	5	4 FLG

Units 10" through 24" and larger Flanged, 150 PSI Working Pressure, 300 lb. Test Pressure

Last two digits of unit # required for coil pull

* "A" Dimension will change according to "B1".



DIVERSIFIED HEAT TRANSFER, INC.

Manufacturers and Designers Since 1938.

Phone: 800-221-1522 / 718-386-6666 • Fax: 718-386-7809

www.dhtnet.com • www.dhtcoils.com



TYPE "WC" HEAT EXCHANGERS - STANDARD "U" TUBE DESIGN • BONNET HEAD

Unit	HEAD							SHELL							Inlet & Outlet	
	2 Pass		4 Pass			I	A	C	D	E	F	G	H (NPT)	J		
X	B	X ¹	B ^{1*}	Z	Y											
WC16B()-24 36 48 60 72 84 96 108 120 132 144	6 FLG ↑ ↓ 6 FLG	19 ↑ ↓ 19	4 FLG ↑ ↓ 4 FLG	16-15/16 ↑ ↓ 16-15/16	3 ↑ ↓ 3	12-1/2 ↑ ↓ 12-1/2	6-1/2 ↑ ↓ 6-1/2	42-1/2 54-1/2 66-1/2 78-1/2 90-1/2 102-1/2 114-1/2 126-1/2 138-1/2 150-1/2 162-1/2	6 ↑ ↓ 6	10 22 34 46 58 70 82 94 106 118 130	8 ↑ ↓ 8	16 ↑ ↓ 16	20-3/8 ↑ ↓ 20-3/8	3/4 ↑ ↓ 3/4	5 ↑ ↓ 5	4 FLG ↑ ↓ 4 FLG
WC18B()-24 36 48 60 72 84 96 108 120 132 144	8 FLG ↑ ↓ 8 FLG	21-7/8 ↑ ↓ 21-7/8	5 FLG ↑ ↓ 5 FLG	18-1/16 ↑ ↓ 18-1/16	3-1/2 ↑ ↓ 3-1/2	13-1/2 ↑ ↓ 13-1/2	8 ↑ ↓ 8	45-3/4 57-3/4 69-3/4 81-3/4 93-3/4 105-3/4 117-3/4 129-3/4 141-3/4 153-3/4 165-3/4	6 ↑ ↓ 6	10 22 34 46 58 70 82 94 106 118 130	8 ↑ ↓ 8	18 ↑ ↓ 18	22-3/8 ↑ ↓ 22-3/8	3/4 ↑ ↓ 3/4	5 ↑ ↓ 5	4 FLG ↑ ↓ 4 FLG
WC20B()-24 36 48 60 72 84 96 108 120 132 144	8 FLG ↑ ↓ 8 FLG	24-15/16 ↑ ↓ 24-15/16	6 FLG ↑ ↓ 6 FLG	20-3/4 ↑ ↓ 20-3/4	4 ↑ ↓ 4	14-1/2 ↑ ↓ 14-1/2	8 ↑ ↓ 8	48-3/16 60-3/16 72-3/16 84-3/16 96-3/16 108-3/16 120-3/16 132-3/16 144-3/16 156-3/16 168-3/16	7 ↑ ↓ 7	7 19 31 43 55 67 79 91 103 115 127	10 ↑ ↓ 10	20 ↑ ↓ 20	24-3/8 ↑ ↓ 24-3/8	3/4 ↑ ↓ 3/4	5 ↑ ↓ 5	6 FLG ↑ ↓ 6 FLG
WC22B()-24 36 48 60 72 84 96 108 120 132 144	10 FLG ↑ ↓ 10 FLG	26-7/8 ↑ ↓ 26-7/8	8 FLG ↑ ↓ 8 FLG	24-1/4 ↑ ↓ 24-1/4	5 ↑ ↓ 5	15-1/2 ↑ ↓ 15-1/2	9-1/2 ↑ ↓ 9-1/2	49-1/2 61-1/2 73-1/2 85-1/2 97-1/2 109-1/2 121-1/2 133-1/2 145-1/2 157-1/2 169-1/2	8 ↑ ↓ 8	6 18 30 42 54 66 78 90 102 114 126	10 ↑ ↓ 10	22 ↑ ↓ 22	24-3/8 ↑ ↓ 24-3/8	3/4 ↑ ↓ 3/4	5 ↑ ↓ 5	6 FLG ↑ ↓ 6 FLG
WC24B()-24 36 48 60 72 84 96 108 120 132 144	10 FLG ↑ ↓ 10 FLG	27-3/8 ↑ ↓ 27-3/8	8 FLG ↑ ↓ 8 FLG	24-3/8 ↑ ↓ 24-3/8	5 ↑ ↓ 5	16-1/2 ↑ ↓ 16-1/2	9-1/2 ↑ ↓ 9-1/2	50-1/2 62-1/2 74-1/2 86-1/2 98-1/2 110-1/2 122-1/2 134-1/2 146-1/2 158-1/2 170-1/2	8 ↑ ↓ 8	6 18 30 42 54 66 78 90 102 114 126	10 ↑ ↓ 10	24 ↑ ↓ 24	28-3/8 ↑ ↓ 28-3/8	3/4 ↑ ↓ 3/4	5 ↑ ↓ 5	6 FLG ↑ ↓ 6 FLG

Units 10" through 24" and larger Flanged, 150 PSI Working Pressure, 300 lb. Test Pressure

Last Two Digits Of Unit # Required For Coil Pull

* "A" Dimension will change accordingly with B¹.

DHT MODEL WC UNIT HAVING THE CAPACITY TO HEAT G.P.M. OF WATER IN THE TUBES
FROM °F TO °F USING G.P.M. WATER FROM °F TO °F AS THE HEATING MEDIUM IN THE SHELL

MATERIAL SPECIFICATIONS	
PARTS	MATERIALS
HEAD	
SHELL	
TUBE SHEET	
TUBING	
TUBE SUPPORT	
BOLTS & NUTS	
PRESSURE DROP	
HEATING SURF	

JOB _____
ENGINEER _____
CONTRACTOR _____
REP. _____
DATE _____
DWG. HE - _____