

TECHNICAL DATA SHEET

SUPERTHERM

Semi-Instantaneous (Steam-to-Water) Water Heaters

FEATURES:

- Available in single and double wall construction.
- Copper (standard) and optional CuNi or SS coil materials of construction.
- Copper, Cu-Ni or SS material in contact with water (potable water).
- Fully packaged solution for quick and easy single point connections.
- Available in vertical or horizontal (optional) construction.
- Compact foot print- Fits through a standard doorway
- Standard trim is available up to 150 psi and optional up to 300 psi.
- Fully modulating energy input for precise temperature controls.
- Available in electronic or pneumatic controls.
- Advanced PID electronic controls compatible with Building Management Systems.
- ASME- B&PV Code Sec. VIII, Div. 1 Stamped

The Diversified Heat Transfer (DHT) SuperTherm Series of Semi-Instantaneous Water Heaters are the engineered solution for facility managers, mechanical contractors, and engineers who need high recovery capacity in a small space. They are constructed with a stainless steel shell and other non-ferrous materials to ensure long leak-free operation. Designed for continuous high-peak loads, the DHT SuperTherm is ideal for high-demand applications, such as hospitals and dormitories.

Units are custom engineered using steam, boiler water or HTHW as the heating medium. Semi-instantaneous operation provides high output by channeling the incoming cold water directly over the heat exchanger tubes in a controlled manner to maximize the heat transfer rates compared to conventional stratified heat exchanger convection systems. Velocity of water and pressure drop are controlled by changing water flow directly across the heat exchanger, which increases heat transfer and inhibits scale formation.

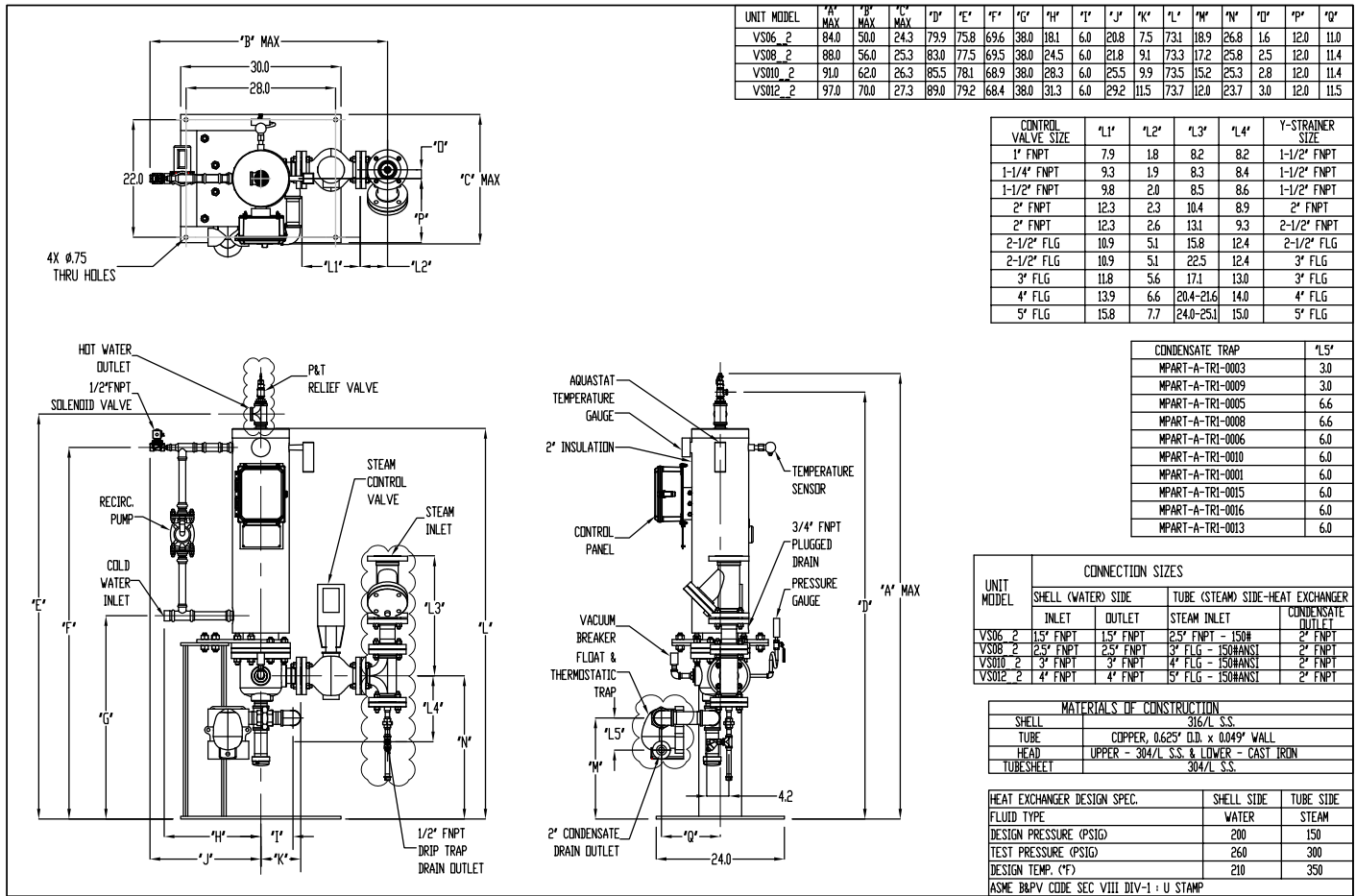
Perfect for mechanical rooms where space is limited, the water heating systems feature vertical configurations so they require less than four square feet of floor space. Plus, the tube bundle can be removed straight out or downward from the bottom of the unit to eliminate the need for overhead space or extra clearances for service or maintenance. Horizontal configurations with rack mounted stands are also available.



APPLICATIONS:

- Ideal for new or retrofit installations
- Suitable for both single or multiple unit installations
- No storage tanks required for instantaneous applications
- Support variety of steam to water heating applications including:
 - Apartment Complexes
 - Prisons / Correctional Facilities
 - Hospitals/ Nursing homes/ Medical Centers
 - Hotels/ Entertainment Facilities
 - Schools/ Colleges/ Universities/ Dormitories
 - Commercial laundries
 - Government & Office buildings
 - Industrial applications

SINGLE WALL UNIT DIMENSIONS:

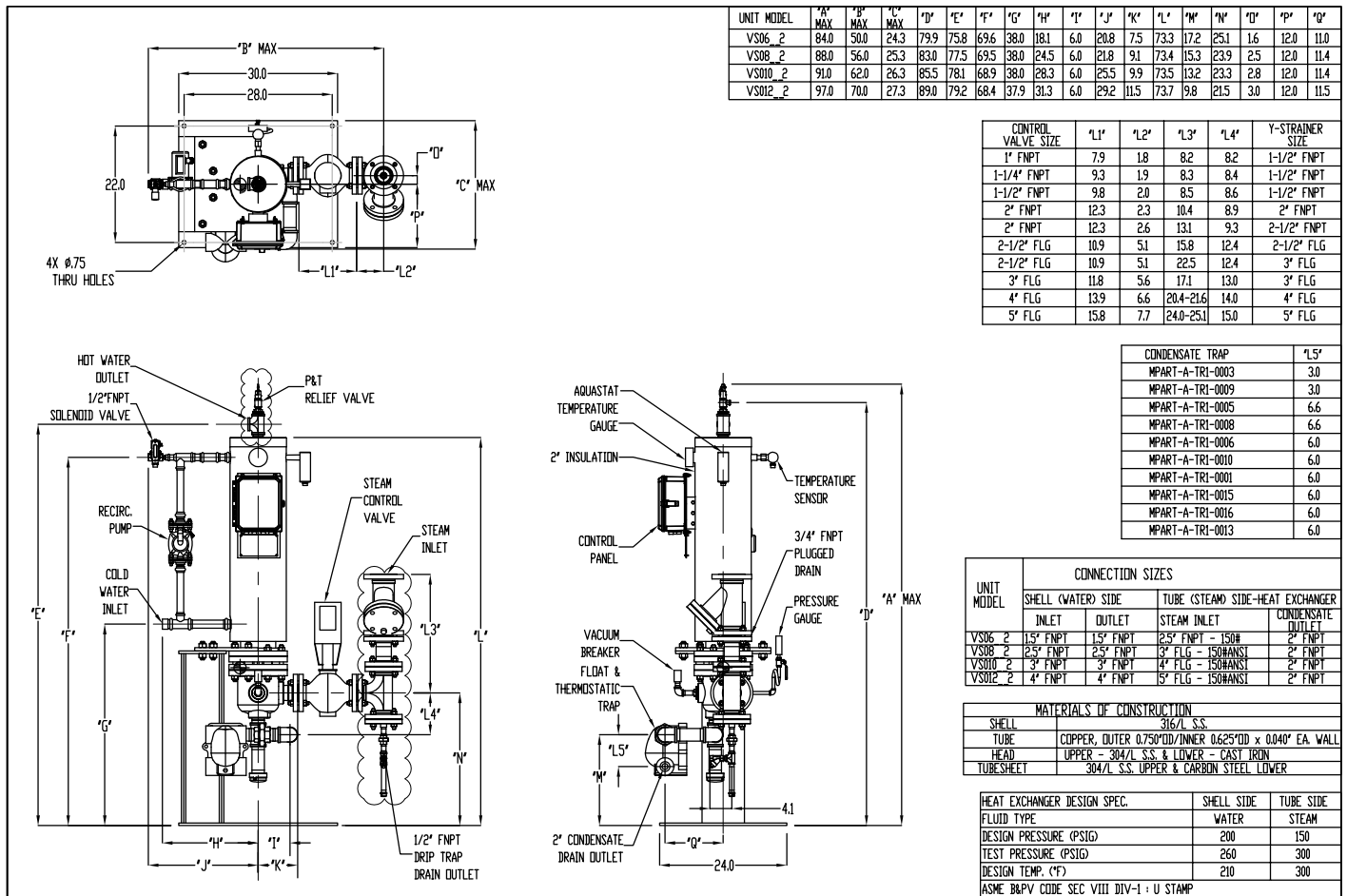


Refer to dimensional drawing for latest updates.

SINGLE WALL UNIT SPECIFICATIONS:

Unit (Shell) Size	6"	8"	10"	12"
Shell Side Pressure Drop @ max. rated flow, PSIG	2.61	3.34	3.00	3.62
Ambient Temperature, °F	32-110			
Electrical Requirements	110V/1Ph/60Hz 5Amps			110V/1Ph/60Hz 6 Amps
Standby Amperage Draw, Amps	1.5			2.5
Max. Continuous Water Flow Rate, GPM	26	81	94	170
Max. Steam Supply Pressure, PSIG	75			
Max. Shell Side Operating Pressure, PSIG	200			
Adjustable Temperature Control, °F	35-190			
Adjustable High Limit Control, °F	100-240			
Accuracy, °F	+/-4			
Water Inlet & Outlet Connection, FNPT	1.50"	2.50"	3.00"	4.00"
Air Consumption (for Pneumatic Controls)	0.2 scfm @ 87 PSIG			
Min. Air Supply Requirements, PSIG	20			
Max. Air Supply Requirements, PSIG	30			
Single Wall Unit- Shipping Weight, LBS (Estimated)	868	1326	1462	1657
Standard Listing & Approvals	ASME B&PV code Sec. VIII, Div. 1 Stamped			

DOUBLE WALL UNIT DIMENSIONS:



Refer to dimensional drawing for latest updates.

DOUBLE WALL SPECIFICATIONS:

Unit (Shell) Size	6"	8"	10"	12"
Shell Side Pressure Drop @ max. rated flow, PSIG	2.42	3.53	3.59	5.45
Ambient Temperature, °F	32-110			
Electrical Requirements	110V/1Ph/60Hz 5Amps			110V/1Ph/60Hz 6 Amps
Standby Amperage Draw, Amps	1.5			2.5
Max. Continuous Water Flow Rate, GPM	31	90	136	229
Max. Steam Supply Pressure, PSIG	75			
Max. Shell Side Operating Pressure, PSIG	200			
Adjustable Temperature Control, °F	35-190			
Adjustable High Limit Control, °F	100-240			
Accuracy, °F	+/-4			
Water Inlet & Outlet Connection, FNPT	1.50"	2.50"	3.00"	4.00"
Air Consumption (for Pneumatic Controls)	0.2 scfm @ 87 PSIG			
Min. Air Supply Requirements, PSIG	20			
Max. Air Supply Requirements, PSIG	30			
Double Wall Unit- Shipping Weight, LBS (Estimated)	943	1401	1537	1732
Standard Listing & Approvals	ASME B&PV code Sec. VIII, Div. 1 Stamped			

DHT can accept no responsibility for possible errors in catalogs, brochures, and other printed material. DHT reserves the right to alter its products without notice. DHT and the DHT logotype are trademarks of DHT. All rights reserved.



439 Main Road, Rte. 202
Towaco, NJ 07082
www.dhtnet.com

Phone: 718-386-6666
Toll Free: 800-221-1522
Fax: 718-386-7809
Email: sales@dhtnet.com