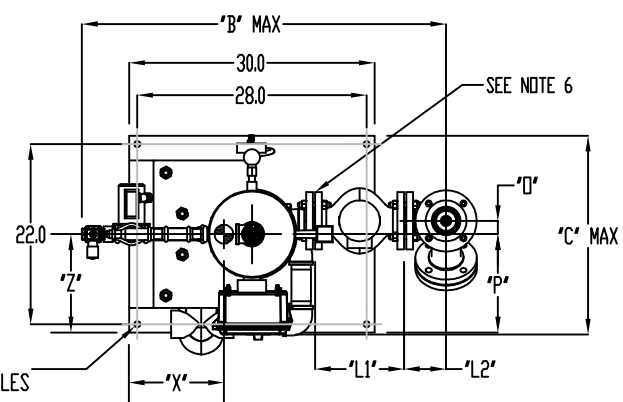


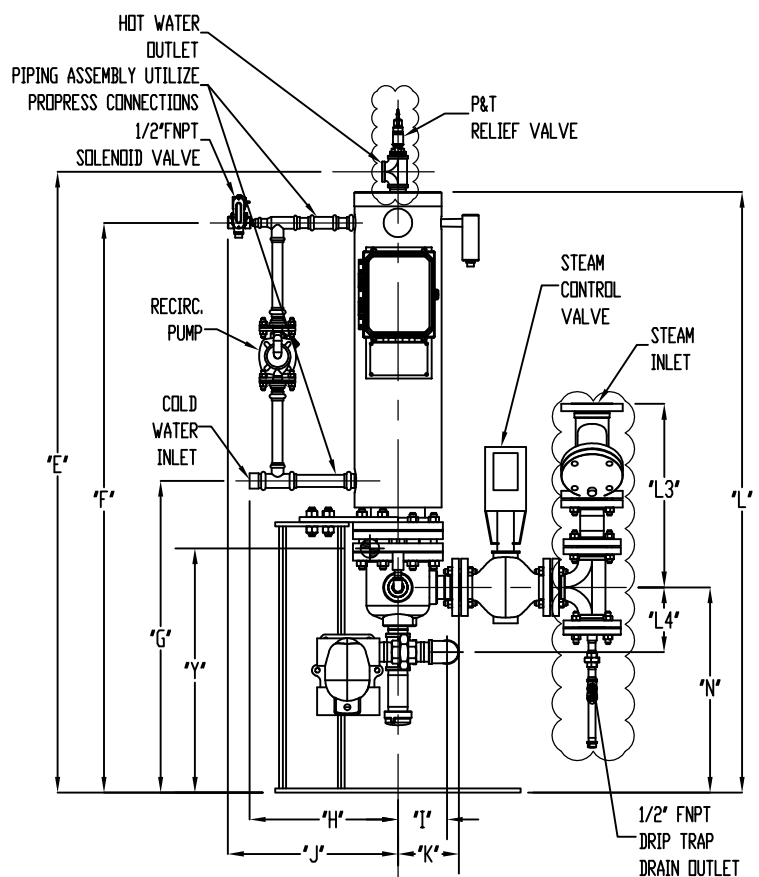
UNIT MODEL	'A' MAX	'B' MAX	'C' MAX	'D'	'E'	'F'	'G'	'H'	'I'	'J'	'K'	'L'	'M'	'N'	'O'	'P'	'Q'
VS06_D2	84.0	50.0	24.3	79.9	75.8	69.6	38.0	18.1	6.0	20.8	7.5	73.3	17.2	25.1	1.6	12.0	11.0
VS08_D2	88.0	56.0	25.3	83.0	77.5	69.5	38.0	24.5	6.0	21.8	9.1	73.4	15.3	23.9	2.5	12.0	11.4
VS010_D2	91.0	62.0	26.3	85.5	78.1	68.9	38.0	28.3	6.0	25.5	9.9	73.5	13.2	23.3	2.8	12.0	11.4
VS012_D2	97.0	70.0	27.3	89.0	79.2	68.4	37.9	31.3	6.0	29.2	11.5	73.7	9.8	21.5	3.0	12.0	11.5

CONTROL VALVE SIZE	'L1'	'L2'	'L3'	'L4'	Y-STRAINER SIZE
1" FNPT	7.9	1.8	8.2	8.2	1-1/2" FNPT
1-1/4" FNPT	9.3	1.9	10.4	8.6	2" FNPT
1-1/2" FNPT	9.8	2.0	10.0	8.7	2" FNPT
2" FNPT	12.3	2.3	10.3	9.0	2" FNPT
2" FNPT	12.3	2.6	13.1	9.3	2-1/2" FNPT
2-1/2" FLG	10.9	5.1	15.8	12.1	2-1/2" FLG
2-1/2" FLG	10.9	5.1	18.8	12.1	3" FLG
3" FLG	11.8	5.6	17.3	12.7	3" FLG
4" FLG	13.9	6.6	20.5-21.6	13.7	4" FLG
5" FLG	15.8	7.7	24.0-25.1	14.6	5" FLG

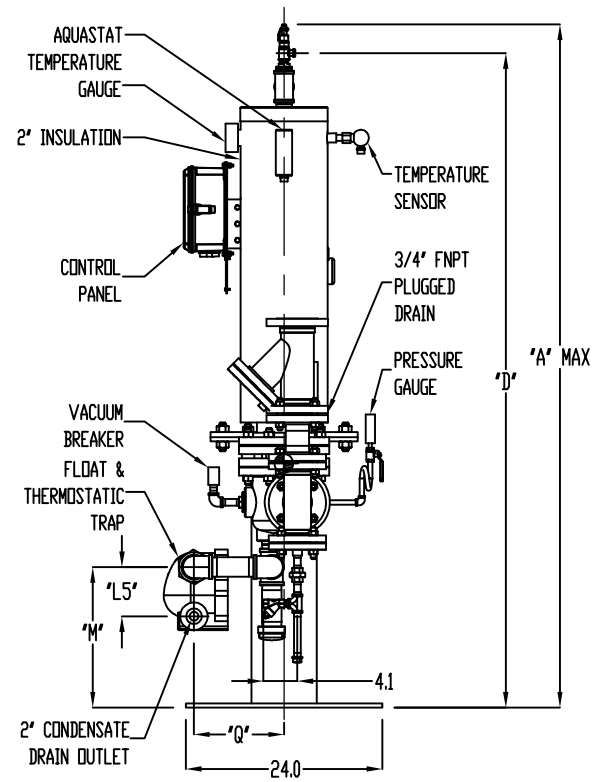


CENTER OF GRAVITY*			
UNIT MODEL	'X'	'Y'	'Z'
VS06_D2	11.8	30.2	11.9
VS08_D2	13.8	31.5	11.9
VS010_D2	14.6	33.9	11.9
VS012_D2	15.8	35.7	11.9

CONDENSATE TRAP	'L5'
MPART-A-TR1-0003	3.0
MPART-A-TR1-0009	3.0
MPART-A-TR1-0005	6.6
MPART-A-TR1-0008	6.6
MPART-A-TR1-0006	6.0
MPART-A-TR1-0010	6.0
MPART-A-TR1-0001	6.0
MPART-A-TR1-0015	6.0
MPART-A-TR1-0016	6.0
MPART-A-TR1-0013	6.0



STEAM INLET HEADER CONNECTION SIZE: \_\_\_\_\_



- NOTES:**
- ALL DIMENSIONS ARE SHOWN IN INCHES.
  - COMPONENTS SHOWN IN CLOUDS ARE SHIPPED WITH UNIT IN SUB-ASSEMBLIES FOR FIELD INSTALLATION.
  - DHT RESERVES THE RIGHT TO MODIFY DIMENSIONS WITHOUT PRIOR NOTICE.
  - DO NOT COMPLETE FIELD PIPING UNTIL UNIT IS PROPERLY INSTALLED. ACTUAL DIMENSIONS MAY VARY DUE TO MANUFACTURING TOLERANCES. FABRICATION ACCEPTS NO LIABILITY DUE TO DIMENSION VARIATION.
  - RELIEF VALVE, SOLENOID VALVE AND CONDENSATE OUTLET PIPED TO DRAIN BY CONTRACTOR. CONDENSATE DRAIN BY GRAVITY. REFER TO INSTALLATION AND PIPING DRAWING FOR MORE DETAILS.
  - ADDITIONAL REDUCER/INCREASER MAY BE REQUIRED TO MATCH CONNECTION SIZES.
  - COLD WATER INLET/RECIRCULATION PIPING ASSEMBLY UTILIZE PROPPRESS CONNECTIONS.
  - \*CENTER OF GRAVITY IS SHOWN WITHOUT STEAM INLET PIPING, CONTROL VALVE AND CONDENSATE DRAIN PIPING.

UNIT MODEL: \_\_\_\_\_

OPERATIONAL CONDITIONS	WATER	STEAM
FLUID QUANTITY	GPM	LB/HR
FLUID TEMPERATURE (IN/OUT)	°F	°F
HEAT EXCHANGED (OPTIONAL)	BTU/HR	

RELIEF VALVES SET AT \_\_\_\_°F & \_\_\_\_PSI

**"CONSULT FACTORY IF WATER/SHELL SIDE OPERATING PRESSURE IS HIGHER THAN 150 PSIG/210°F."**

MATERIALS OF CONSTRUCTION		
SHELL	316/L S.S.	
TUBE	COPPER, OUTER 0.750"OD/INNER 0.625"OD x 0.040" WALL	
HEAD	UPPER - 304/L S.S. & LOWER - CAST IRON	
TUBESHEET	304/L S.S. UPPER & CARBON STEEL LOWER	
HEAT EXCHANGER DESIGN SPEC.	SHELL SIDE	TUBE SIDE
FLUID TYPE	WATER	STEAM
DESIGN PRESSURE (PSIG)	200	150
TEST PRESSURE (PSIG)	260	300
DESIGN TEMP. (°F)	210	300
ASME B&PV CODE SEC VIII DIV-1 : U STAMP		

UNIT MODEL	CONNECTION SIZES			
	SHELL (WATER) SIDE		TUBE (STEAM) SIDE-HEAT EXCHANGER	
	INLET	OUTLET	STEAM INLET	CONDENSATE OUTLET
VS06 D2	1.5" FNPT	1.5" FNPT	2.5" FNPT - 150#	2" FNPT
VS08 D2	2.5" FNPT	2.5" FNPT	3" FLG - 150#ANSI	2" FNPT
VS010 D2	3" FNPT	3" FNPT	4" FLG - 150#ANSI	2" FNPT
VS012 D2	4" FNPT	4" FNPT	5" FLG - 150#ANSI	2" FNPT

439 MAIN RD. TOWACO NJ 07082  
 PHONE: (800) 221-1522 FAX: (855) 221-2400

VS DW SUPERTHERM WATER HEATER W/ ELECTRIC VALVE (UP TO 25 PSIG) DIMENSIONAL DRAWING

NAME	DATE	DWG#	REV
DRAWN BY	SS	04/03/2018	S-22
CHECKED BY	DA	04/06/2018	SHEET 1 OF 1