

VIGILANTE OIL PREHEATERS

LINDY COILS

Specification Sheet

Engineer Specifications:

Furnish and install (on each boiler) a Lindy Vigilante Safety Oil PreHeater having the capacity of:

- Heating _____ GPH of fuel oil
- From _____ °F to _____ °F with boiler water at _____ °F
- Steam at _____ GPM
- Discharge Side: 4 pass or 6 pass
- Suction Side: 2 pass
- Heating Surface will consist of:
 - Tube-within-atube bundle of carbon steel
 - Copper tubes enclosed within a seamless steel pipe shell

Design Specifications:

Shell: Seamless steel pipe

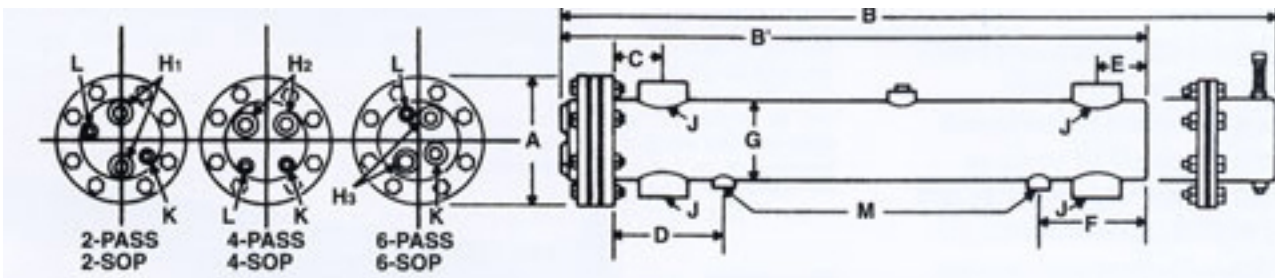
Oil Chamber: Heavy cast iron

Tube Sheets: Heavy rolled steel

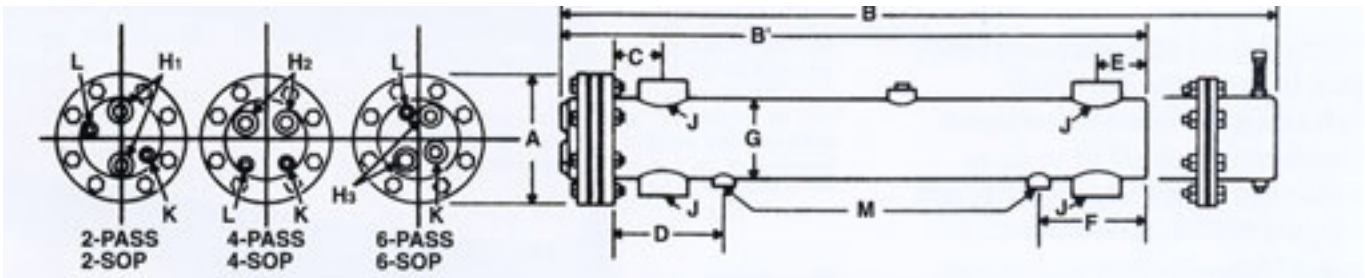
Tubes:

- Inner- 5/8 OD Carbon steel
- Outer- 3/4 Seamless Copper

Pressure PSIG	Working	Test
Tube Shell	125	250
Shell Side	125	250



		2- PASS 2-SOP														
Heater Number	Heater Number	A	B	B'	C	D	E	F	G	H1	H2	H3	J	K	L	M
2-SOP-256		11	34		4	9	4	9	6 5/8	2 1/2			2	3/4	3/4	1 1/4
2-SOP-306		11	39		4	9	4	9	6 5/8	2 1/2			2	3/4	3/4	1 1/4
2-SOP-356		11	44		4	9	4	9	6 5/8	2 1/2			2	3/4	3/4	1 1/4
2-SOP-406		11	49		4	9	4	9	6 5/8	2 1/2			2	3/4	3/4	1 1/4
2-SOP-456		11	54		4	9	4	9	6 5/8	2 1/2			2	3/4	3/4	1 1/4
2-SOP-506		11	59		4	9	4	9	6 5/8	2 1/2			2	3/4	3/4	1 1/4
2-SOP-556		11	64		4	9	4	9	6 5/8	2 1/2			2	3/4	3/4	1 1/4
2-SOP-606		11	69		4	9	4	9	6 5/8	2 1/2			2	3/4	3/4	1 1/4
2-SOP-656		11	74		4	9	4	9	6 5/8	2 1/2			2	3/4	3/4	1 1/4
2-SOP-706		11	79		4	9	4	9	6 5/8	2 1/2			2	3/4	3/4	1 1/4
2-SOP-756		11	84		4	9	4	9	6 5/8	2 1/2			2	3/4	3/4	1 1/4
2-SOP-806		11	89		4	9	4	9	6 5/8	2 1/2			2	3/4	3/4	1 1/4



6- PASS 6-SOP																
Heater Number	Heater Number	A	B	B'	C	D	E	F	G	H1	H2	H3	J	K	L	M
6-SOP-256	6-OP-246	11	34	27 ¼	4	9	4	9	6 ½	-	-	1 ½	2	1	¾	1 ¼
6-SOP-306	6-OP-296	11	39	32 ¼	4	9	4	9	6 ½	-	-	1 ½	2	1	¾	1 ¼
6-SOP-356	6-OP-346	11	44	37 ¼	4	9	4	9	6 ½	-	-	1 ½	2	1	¾	1 ¼
6-SOP-406	6-OP-396	11	49	42 ¼	4	9	4	9	6 ½	-	-	1 ½	2	1	¾	1 ¼
6-SOP-456	6-OP-446	11	54	47 ¼	4	9	4	9	6 ½	-	-	1 ½	2	1	¾	1 ¼
6-SOP-506	6-OP-496	11	59	52 ¼	4	9	4	9	6 ½	-	-	1 ½	2	1	¾	1 ¼
6-SOP-556	6-OP-546	11	64	57 ¼	4	9	4	9	6 ½	-	-	1 ½	2	1	¾	1 ¼
6-SOP-606	6-OP-596	11	69	62 ¼	4	9	4	9	6 ½	-	-	1 ½	2	1	¾	1 ¼
6-SOP-656	6-OP-646	11	74	67 ¼	4	9	4	9	6 ½	-	-	1 ½	2	1	¾	1 ¼
6-SOP-706	6-OP-696	11	79	72 ¼	4	9	4	9	6 ½	-	-	1 ½	2	1	¾	1 ¼
6-SOP-756	-	11	84	-	4	9	4	9	6 ½	-	-	1 ½	2	1	¾	1 ¼
6-SOP-806	-	11	89	-	4	9	4	9	6 ½	-	-	1 ½	2	1	¾	1 ¼
6-SOP-258	6-OP-248	13 ½	35 ¼	28 ¾	5	10	5	10	8 ½	-	-	2 ½	2 ½	1 ½	¾	1 ¼
6-SOP-308	6-OP-298	13 ½	40 ¼	23 ¾	5	10	5	10	8 ½	-	-	2 ½	2 ½	1 ½	¾	1 ¼
6-SOP-358	6-OP-348	13 ½	45 ¼	38 ¾	5	10	5	10	8 ½	-	-	2 ½	2 ½	1 ½	¾	1 ¼
6-SOP-408	6-OP-398	13 ½	50 ¼	43 ¾	5	10	5	10	8 ½	-	-	2 ½	2 ½	1 ½	¾	1 ¼
6-SOP-458	6-OP-448	13 ½	55 ¼	48 ¾	5	10	5	10	8 ½	-	-	2 ½	2 ½	1 ½	¾	1 ¼
6-SOP-508	6-OP-498	13 ½	60 ¼	53 ¾	5	10	5	10	8 ½	-	-	2 ½	2 ½	1 ½	¾	1 ¼
6-SOP-558	6-OP-548	13 ½	65 ¼	58 ¾	5	10	5	10	8 ½	-	-	2 ½	2 ½	1 ½	¾	1 ¼
6-SOP-608	6-OP-598	13 ½	70 ¼	63 ¾	5	10	5	10	8 ½	-	-	2 ½	2 ½	1 ½	¾	1 ¼
6-SOP-658	6-OP-648	13 ½	75 ¼	68 ¾	5	10	5	10	8 ½	-	-	2 ½	2 ½	1 ½	¾	1 ¼
6-SOP-708	6-OP-698	13 ½	80 ¼	73 ¾	5	10	5	10	8 ½	-	-	2 ½	2 ½	1 ½	¾	1 ¼
6-SOP-758	-	13 ½	85 ¼	-	5	10	5	10	8 ½	-	-	2 ½	2 ½	1 ½	¾	1 ¼
6-SOP-808	-	13 ½	90 ¼	-	5	10	5	10	8 ½	-	-	2 ½	2 ½	1 ½	¾	1 ¼
6-SOP-3010	-	16	41 ¼	-	6	11	6	11	10 ¾	-	-	3	3	2	¾	1 ¼
6-SOP-3510	-	16	46 ¼	-	6	11	6	11	10 ¾	-	-	3	3	2	¾	1 ¼
6-SOP-4010	-	16	51 ¼	-	6	11	6	11	10 ¾	-	-	3	3	2	¾	1 ¼
6-SOP-4510	-	16	56 ¼	-	6	11	6	11	10 ¾	-	-	3	3	2	¾	1 ¼
6-SOP-5010	-	16	61 ¼	-	6	11	6	11	10 ¾	-	-	3	3	2	¾	1 ¼
6-SOP-5510	-	16	66 ¼	-	6	11	6	11	10 ¾	-	-	3	3	2	¾	1 ¼
6-SOP-6010	-	16	71 ¼	-	6	11	6	11	10 ¾	-	-	3	3	2	¾	1 ¼
6-SOP-6510	-	16	76 ¼	-	6	11	6	11	10 ¾	-	-	3	3	2	¾	1 ¼
6-SOP-7010	-	16	81 ¼	-	6	11	6	11	10 ¾	-	-	3	3	2	¾	1 ¼
6-SOP-7510	-	16	86 ¼	-	6	11	6	11	10 ¾	-	-	3	3	2	¾	1 ¼
6-SOP-8010	-	16	91 ¼	-	6	11	6	11	10 ¾	-	-	3	3	2	¾	1 ¼

Diversified Heat Transfer, Inc.
439 Main Road, Rte. 202
Towaco, NJ 07082

CONTACT US
P. 718-386-6666 / 800-221-1522
F. 718-386-7809
E. dht@dhtnet.com

FOLLOW US @
facebook.com./diversifiedheattransfer
twitter.com./DiversifiedHeat
linkedin.com./diversified-heat-transfer

Scan Here

