



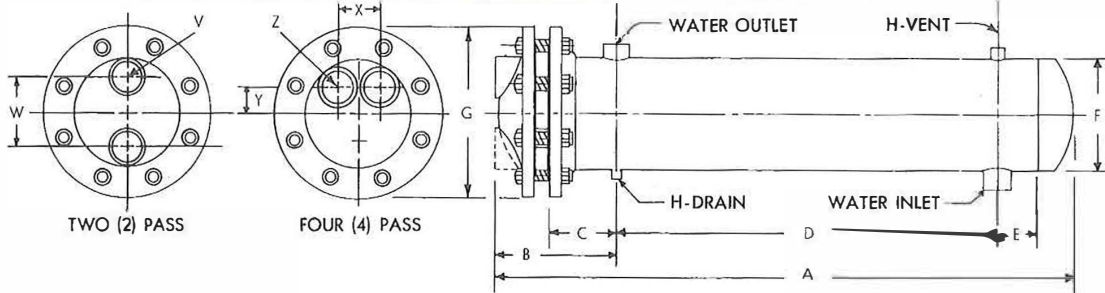
DIVERSIFIED HEAT TRANSFER, INC.

Manufacturers and Designers Since 1938.

Phone: 800-221-1522 / 718-386-6666 • Fax: 718-386-7809

www.dhtnet.com • www.dhtcoils.com

TYPE "WC" HEAT EXCHANGERS - STANDARD "U" TUBE DESIGN • CAST IRON HEAD



DIMENSIONS: All dimensions are in inches and are subject to change. Where dimensions are needed for layout, write factory for certified prints

Unit	HEAD					SHELL								
	2 Pass		4 Pass			A	B	C	D	E	F	G	H(NPT)	Inlet & Outlet
	V(NPT)	W	Z(NPT)	X	Y									
WC4B()-24 30 36 42 48 54 60 66 72 78 84 90 96	1-1/2	2-1/2	1	2-1/8	1	29-1/4	7-3/4	5	15	4	4-1/2	9	3/4	1-1/2NPT
	↑	↑	↑	↑	↑	35-1/4	↑	↑	21	↑	↑	↑	↑	↑
	↑	↑	↑	↑	↑	41-1/4	↑	↑	27	↑	↑	↑	↑	↑
	↑	↑	↑	↑	↑	47-1/4	↑	↑	33	↑	↑	↑	↑	↑
	↑	↑	↑	↑	↑	53-1/4	↑	↑	39	↑	↑	↑	↑	↑
	↑	↑	↑	↑	↑	59-1/4	↑	↑	45	↑	↑	↑	↑	↑
	↑	↑	↑	↑	↑	65-1/4	↑	↑	51	↑	↑	↑	↑	↑
	↑	↑	↑	↑	↑	71-1/4	↑	↑	57	↑	↑	↑	↑	↑
	↑	↑	↑	↑	↑	77-1/4	↑	↑	63	↑	↑	↑	↑	↑
	↑	↑	↑	↑	↑	83-1/4	↑	↑	69	↑	↑	↑	↑	↑
	↑	↑	↑	↑	↑	89-1/4	↑	↑	75	↑	↑	↑	↑	↑
	↑	↑	↑	↑	↑	95-1/4	↑	↑	81	↑	↑	↑	↑	↑
↑	↑	↑	↑	↑	101-1/4	↑	↑	87	↑	↑	↑	↑	↑	
WC5B()-24 30 36 42 48 54 60 66 72 78 84 90 96	2	3	1-1/4	2-3/8	1-3/16	30-1/8	8-1/8	5	15	4	5-9/16	10	3/4	2 NPT
	↑	↑	↑	↑	↑	36-1/8	↑	↑	21	↑	↑	↑	↑	↑
	↑	↑	↑	↑	↑	42-1/8	↑	↑	27	↑	↑	↑	↑	↑
	↑	↑	↑	↑	↑	48-1/8	↑	↑	33	↑	↑	↑	↑	↑
	↑	↑	↑	↑	↑	54-1/8	↑	↑	39	↑	↑	↑	↑	↑
	↑	↑	↑	↑	↑	60-1/8	↑	↑	45	↑	↑	↑	↑	↑
	↑	↑	↑	↑	↑	66-1/8	↑	↑	51	↑	↑	↑	↑	↑
	↑	↑	↑	↑	↑	72-1/8	↑	↑	57	↑	↑	↑	↑	↑
	↑	↑	↑	↑	↑	78-1/8	↑	↑	63	↑	↑	↑	↑	↑
	↑	↑	↑	↑	↑	84-1/8	↑	↑	69	↑	↑	↑	↑	↑
	↑	↑	↑	↑	↑	90-1/8	↑	↑	75	↑	↑	↑	↑	↑
	↑	↑	↑	↑	↑	96-1/8	↑	↑	81	↑	↑	↑	↑	↑
↑	↑	↑	↑	↑	102-1/8	↑	↑	87	↑	↑	↑	↑	↑	
WC6B()-24 30 36 42 48 54 60 66 72 78 84 90 96 102 108 114 120	2-1/2	4	1-1/2	3	1-1/2	30-7/8	8-3/8	5	15	4	6-5/8	11	3/4	2NPT
	↑	↑	↑	↑	↑	36-7/8	↑	↑	21	↑	↑	↑	↑	↑
	↑	↑	↑	↑	↑	42-7/8	↑	↑	27	↑	↑	↑	↑	↑
	↑	↑	↑	↑	↑	48-7/8	↑	↑	33	↑	↑	↑	↑	↑
	↑	↑	↑	↑	↑	54-7/8	↑	↑	39	↑	↑	↑	↑	↑
	↑	↑	↑	↑	↑	60-7/8	↑	↑	45	↑	↑	↑	↑	↑
	↑	↑	↑	↑	↑	66-7/8	↑	↑	51	↑	↑	↑	↑	↑
	↑	↑	↑	↑	↑	72-7/8	↑	↑	57	↑	↑	↑	↑	↑
	↑	↑	↑	↑	↑	78-7/8	↑	↑	63	↑	↑	↑	↑	↑
	↑	↑	↑	↑	↑	84-7/8	↑	↑	69	↑	↑	↑	↑	↑
	↑	↑	↑	↑	↑	90-7/8	↑	↑	75	↑	↑	↑	↑	↑
	↑	↑	↑	↑	↑	96-7/8	↑	↑	81	↑	↑	↑	↑	↑
↑	↑	↑	↑	↑	102-7/8	↑	↑	87	↑	↑	↑	↑	↑	
↑	↑	↑	↑	↑	108-7/8	↑	↑	93	↑	↑	↑	↑	↑	
↑	↑	↑	↑	↑	114-7/8	↑	↑	99	↑	↑	↑	↑	↑	
↑	↑	↑	↑	↑	120-7/8	↑	↑	105	↑	↑	↑	↑	↑	
↑	↑	↑	↑	↑	126-7/8	↑	↑	111	↑	↑	↑	↑	↑	



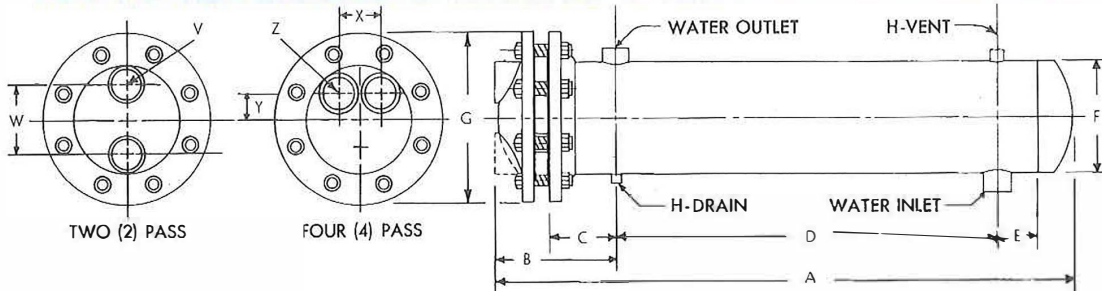
DIVERSIFIED HEAT TRANSFER, INC.

Manufacturers and Designers Since 1938.

Phone: 800-221-1522 / 718-386-6666 • Fax: 718-386-7809

www.dhtnet.com • www.dhtcoils.com

TYPE "WC" HEAT EXCHANGERS - STANDARD "U" TUBE DESIGN • CAST IRON HEAD



DIMENSIONS: All dimensions are in inches and are subject to change. Where dimensions are needed for layout, write factory for certified prints

Unit	HEAD					SHELL								Inlet & Outlet
	2 Pass		4 Pass			A	B	C	D	E	F	G	H(NPT)	
	V(NPT)	W	Z(NPT)	X	Y									
WC4B()-24 30 36 42 48 54 60 66 72 78 84 90 96	1-1/2	2-1/2	1	2-1/8	1	29-1/4	7-3/4	5	15	4	4-1/2	9	3/4	1-1/2NPT
	↑	↑	↑	↑	↑	35-1/4	↑	↑	21	↑	↑	↑	↑	
	↑	↑	↑	↑	↑	41-1/4	↑	↑	27	↑	↑	↑	↑	
	↑	↑	↑	↑	↑	47-1/4	↑	↑	33	↑	↑	↑	↑	
	↑	↑	↑	↑	↑	53-1/4	↑	↑	39	↑	↑	↑	↑	
	↑	↑	↑	↑	↑	59-1/4	↑	↑	45	↑	↑	↑	↑	
	↑	↑	↑	↑	↑	65-1/4	↑	↑	51	↑	↑	↑	↑	
	↑	↑	↑	↑	↑	71-1/4	↑	↑	57	↑	↑	↑	↑	
	↑	↑	↑	↑	↑	77-1/4	↑	↑	63	↑	↑	↑	↑	
	↑	↑	↑	↑	↑	83-1/4	↑	↑	69	↑	↑	↑	↑	
	↑	↑	↑	↑	↑	89-1/4	↓	↓	75	↓	↓	↓	↓	
	↑	↑	↑	↑	↑	95-1/4	↓	↓	81	↓	↓	↓	↓	
96	1-1/2	2-1/2	1	2-1/8	1	101-1/4	7-3/4	5	87	4	4-1/2	9	3/4	1-1/2NPT
WC5B()-24 30 36 42 48 54 60 66 72 78 84 90 96	2	3	1-1/4	2-3/8	1-3/16	30-1/8	8-1/8	5	15	4	5-9/16	10	3/4	2 NPT
	↑	↑	↑	↑	↑	36-1/8	↑	↑	21	↑	↑	↑	↑	
	↑	↑	↑	↑	↑	42-1/8	↑	↑	27	↑	↑	↑	↑	
	↑	↑	↑	↑	↑	48-1/8	↑	↑	33	↑	↑	↑	↑	
	↑	↑	↑	↑	↑	54-1/8	↑	↑	39	↑	↑	↑	↑	
	↑	↑	↑	↑	↑	60-1/8	↑	↑	45	↑	↑	↑	↑	
	↑	↑	↑	↑	↑	66-1/8	↑	↑	51	↑	↑	↑	↑	
	↑	↑	↑	↑	↑	72-1/8	↑	↑	57	↑	↑	↑	↑	
	↑	↑	↑	↑	↑	78-1/8	↑	↑	63	↑	↑	↑	↑	
	↑	↑	↑	↑	↑	84-1/8	↑	↑	69	↑	↑	↑	↑	
	↑	↑	↑	↑	↑	90-1/8	↓	↓	75	↓	↓	↓	↓	
	↑	↑	↑	↑	↑	96-1/8	↓	↓	81	↓	↓	↓	↓	
96	2	3	1-1/4	2-3/8	1-3/16	102-1/8	8-1/8	5	87	4	5-9/16	10	3/4	2 NPT
WC6B()-24 30 36 42 48 54 60 66 72 78 84 90 96 102 108 114 120	2-1/2	4	1-1/2	3	1-1/2	30-7/8	8-3/8	5	15	4	6-5/8	11	3/4	2NPT
	↑	↑	↑	↑	↑	36-7/8	↑	↑	21	↑	↑	↑	↑	
	↑	↑	↑	↑	↑	42-7/8	↑	↑	27	↑	↑	↑	↑	
	↑	↑	↑	↑	↑	48-7/8	↑	↑	33	↑	↑	↑	↑	
	↑	↑	↑	↑	↑	54-7/8	↑	↑	39	↑	↑	↑	↑	
	↑	↑	↑	↑	↑	60-7/8	↑	↑	45	↑	↑	↑	↑	
	↑	↑	↑	↑	↑	66-7/8	↑	↑	51	↑	↑	↑	↑	
	↑	↑	↑	↑	↑	72-7/8	↑	↑	57	↑	↑	↑	↑	
	↑	↑	↑	↑	↑	78-7/8	↑	↑	63	↑	↑	↑	↑	
	↑	↑	↑	↑	↑	84-7/8	↑	↑	69	↑	↑	↑	↑	
	↑	↑	↑	↑	↑	90-7/8	↑	↑	75	↑	↑	↑	↑	
	↑	↑	↑	↑	↑	96-7/8	↑	↑	81	↑	↑	↑	↑	
	↑	↑	↑	↑	↑	102-7/8	↑	↑	87	↑	↑	↑	↑	
	↑	↑	↑	↑	↑	108-7/8	↑	↑	93	↑	↑	↑	↑	
↑	↑	↑	↑	↑	114-7/8	↑	↑	99	↑	↑	↑	↑		
↑	↑	↑	↑	↑	120-7/8	↓	↓	105	↓	↓	↓	↓		
120	2-1/2	4	1-1/2	3	1-1/2	126-7/8	8-3/8	5	111	4	6-5/8	11	3/4	2NPT