

SP SERIES

INDIRECT-FIRED, SEMI-INSTANTANEOUS BOILER WATER-FIRED WATER HEATER

FEATURES:

Available with a Single Wall & Double Wall heat exchanger

- Brazed Plate - Single Wall & Double Wall Construction
- Plate and Frame - Double Wall Construction
- $\pm 4^{\circ}\text{F}$ temp control, 5°F Approach Temperature
- Fully modulating electronic 3-Way control valve
- Potable water: Stainless steel or copper alloys construction for domestic water
- For high pressure applications contact the factory for more information
- Control Panel can be rotated 180° for easy readability
- NEW Advanced Electronic PID controls with touchscreen user interface and compatible with Building Management System via ModBus IP or built-in BacNet IP
- Fully packaged solution for quick and easy single point connections
- Compact Footprint- unit can fit through standard doorways
- Compatible with Medium, Normal and Low Temperature Boiler Water
- Optional heat exchanger insulation is available
- Certifications: ANSI/AHRI 400, ASME



The DHT SP Series of advanced plate-type boiler water fired water heaters incorporates the DHT's industry leading PID controller with a high-efficiency plate and frame or brazed plate heat exchangers to satisfy potable water heating needs in commercial and institutional environments without the need for large hot water storage tanks. The packaged systems utilize simple, real-time load tracking and responsive controls to maintain accurate hot water temperature under various load patterns.

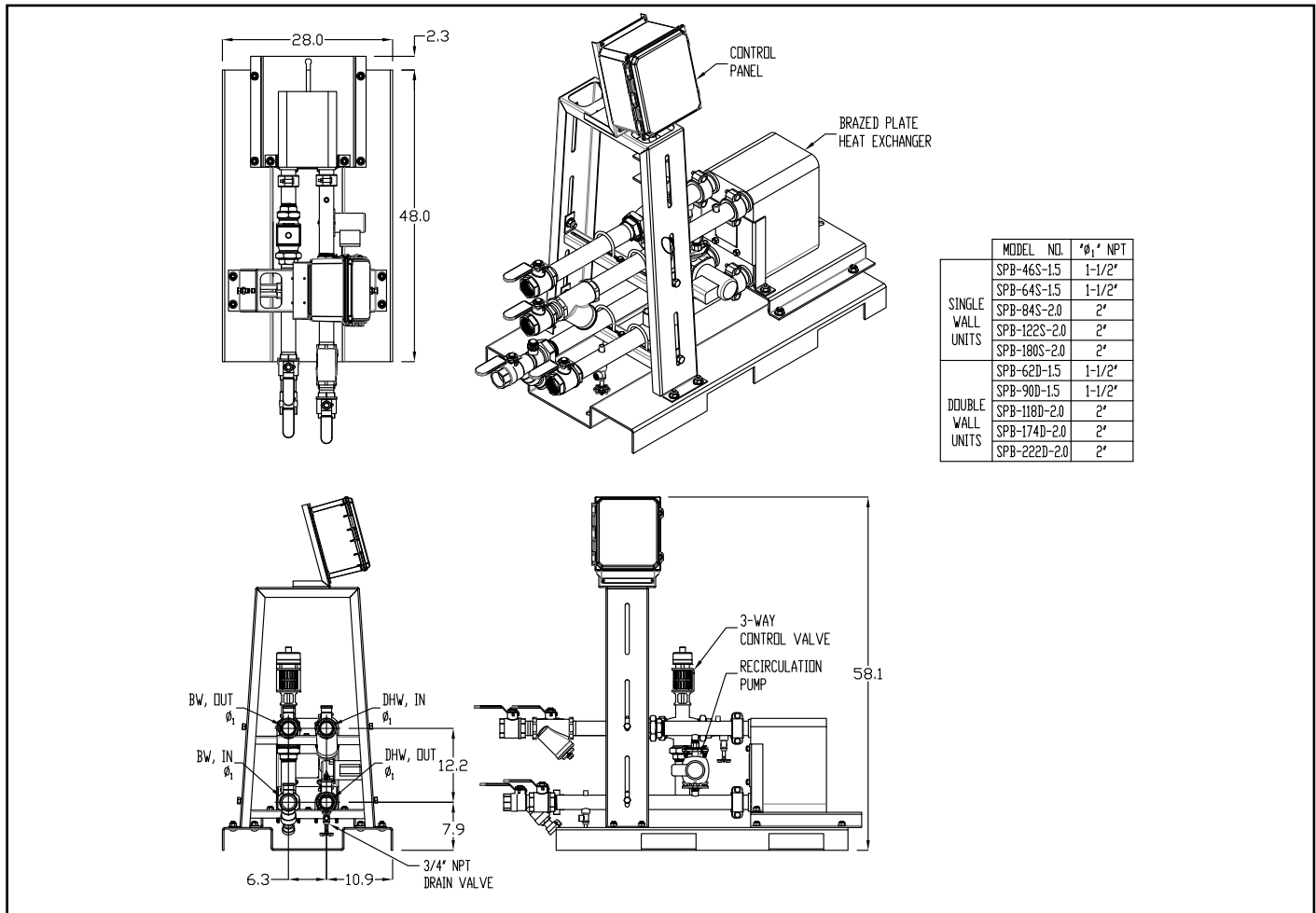
The DHT fully packaged SP Series Water Heater can efficiently produce up to 150 GPM of domestic hot water depending upon operating temperatures. Units can be coupled with all major medium-, normal-, and low-temperature condensing boiler water to achieve high efficiency in an optimal space.

Maintenance is easy with SP Series. Flanged victaulic or union connections allow for the complete removal of the heat exchangers without disturbing the water heating piping. Isolation valves, inlet strainer and backflush connections are provided for scheduled maintenance.

APPLICATIONS:

- Ideal for new or retrofit installations
- Suitable for both single or multiple unit installations
- No storage tanks required
- Support variety of water to water heating applications including:
 - Apartment Complexes
 - Prisons / Correctional Facilities
 - Hospitals/ Nursing homes/ Medical Centers
 - Hotels/ Entertainment Facilities
 - Schools/ Colleges/ Universities/ Dormitories
 - Commercial laundries
 - Government & Office buildings
 - Industrial applications

BRAZED PLATE UNIT DIMENSIONS:



BRAZED PLATE UNIT SPECIFICATIONS:

Single Wall Model #	SPB-46S-1.5	SPB-64S-1.5	SPB-84S-2.0	SPB-122S-2.0	SPB-180S-2.0
Double Wall Model #	SPB-62D-1.5	SPB-90D-1.5	SPB-118D-2.0	SPB-174D-2.0	SPB-222D-2.0
Electrical Requirements	120/1/60 Hz 2 Amp or 220/1/50 Hz 2 Amp				
Standby Amperage Draw	2 Amp				
Full Load Amperage Draw	2 Amp				
Domestic Water Pressure Drop	Under 8 PSIG @ max. rated flow				
Max. Continuous Water Flow	90 GPM				
Ambient Temperature	32-110°F				
Max. Boiler Water Pressure & Temperature	150 PSIG @ 220°F For high pressure applications contact the factory for more information				
Max. Domestic Water Operating Pressure	150PSIG (standard) For high pressure applications contact the factory for more information				
Adjustable Temperature Control Set Point	Up to 180°F				
Accuracy	+/-4°F				
Water Inlets/Outlet Connection Sizes	1.5" FNPT		2.0" FNPT		
Estimated Weight, Shipping	SPB-46S-1.5 538 lbs	SPB-64S-1.5 548 lbs	SPB-84S-2.0 584 lbs	SPB-122S-2.0 604 lbs	SPB-180S-2.0 640 lbs
	SPB-62D-1.5 575 lbs	SPB-90D-1.5 605 lbs	SPB-118D-2.0 661 lbs	SPB-174D-2.0 722 lbs	SPB-222D-2.0 778 lbs
Standard Listing & Approvals	ANSI / AHRI 400, ASME				

Note: Dimensions and Specifications subject to change without notice.

PLATE AND FRAME UNIT DIMENSIONS:

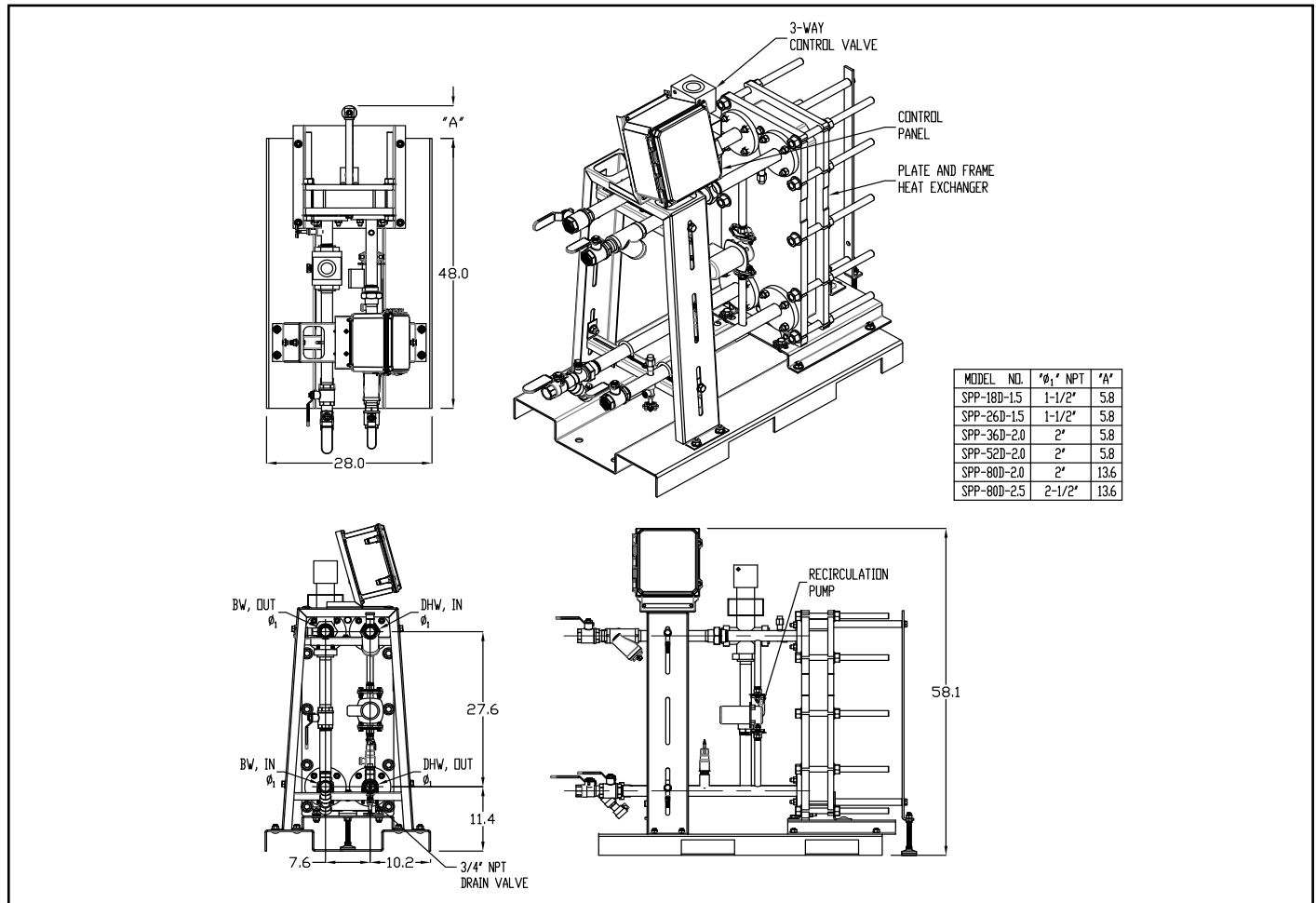


PLATE AND FRAME UNIT SPECIFICATIONS:

Double Wall Model #	SPP-18D-1.5	SPP-26D-1.5	SPP-36D-2.0	SPP-52D-2.0	SPP-80D-2.0	SPP-80D-2.5
Electrical Requirements	120/1/60 Hz 2 Amp or 220/1/50 Hz 2 Amp					
Standby Amperage Draw	2 Amp					
Full Load Amperage Draw	2 Amp					
Domestic Water Pressure Drop	Under 8 PSIG @ max. rated flow					
Max. Continuous Water Flow	90 GPM					150 GPM
Ambient Temperature	32-110°F					
Max. Boiler Water Pressure & Temperature	150 PSIG @ 220°F For high pressure applications contact the factory for more information					
Max. Domestic Water Operating Pressure	150PSIG (standard) For high pressure applications contact the factory for more information					
Adjustable Temperature Control Set Point	Up to 180°F					
Accuracy	+/-4°F					
Water Inlets/Outlet Connection Sizes	1.5" FNPT		2.0" FNPT			2.5" FNPT
Estimated Weight, Shipping	934 lbs	963 lbs	1024 lbs	1082 lbs	1315 lbs	1333 lbs
Standard Listing & Approvals	ANSI / AHRI 400, ASME					

Note: Dimensions and Specifications subject to change without notice.

PID CONTROL SYSTEM:

FEATURES:

- 4.3 HMI Touchscreen
- Feedforward Logic Controller includes 1/8 DIN with LCD display (back-up interface)
- Data Logging
- Fault Log
- Trending/Graphing
- Compatibility with Modbus IP and BacNet IP BAS system standard without the need for external gateway.
- A gateway can be used for all other protocols



The NEW DHT state of the art control system offers unmatched performance and full user configurability for water heater applications. It features a durable temperature sensor transmitting a millivolt signal through quality twisted shielded wiring. The signal transmits directly into the advanced PID controller, which in turn sends a signal to the electrically activated fully modulating and fast acting three-way control valve with high turndown to achieve accurate temperature control over various demand situations. The controller has a 4.3-inch TFT color touchscreen user interface and is compatible with a Building Management System via ModBus IP or BacNet IP. Optional communications gateway is also available for RS485 communication.

SPECIFICATIONS:

Enclosure Dimensions	12"H x 10" W x 7" D
Display	4.3" TFT Color LCD
Graphics Display Resolution/ Colors	480 x 272 pixels w/ 65,536 display colors
Backlight	White LED, service life 50,000 hours and 24hr operation
Brightness control	16 Levels (Adjusted with touch panel)
Operating Mode	Single Tone, Visual Indicator
Memory:	8Gb
Supply Voltage	120/240 VAC
Certifications	NEMA 4, UL

DHT can accept no responsibility for possible errors in catalogs, brochures, and other printed material. DHT reserves the right to alter its products without notice. DHT and the DHT logotype are trademarks of DHT. All rights reserved.



439 Main Road, Rte. 202
Towaco, NJ 07082
www.dhtnet.com

Phone: 718-386-6666
Toll Free: 800-221-1522
Fax: 718-386-7809
Email: sales@dhtnet.com