



## TECHNICAL DATA SHEET

# SS SERIES

## USG LINE UNFIRED STEAM GENERATOR

### FEATURES:

- Accurate Pressure Control
- Single or Multiple Installation
- Compact, Space Efficient
- Fully Modulating Variable Steam Input
- Complete Factory Packaged Controls
- Ideal for New or Retrofit
- All 316 Stainless Wetted Surfaces
- ASME B&PV Code Sec. VIII, Div. 1 Stamped, (UB Stamp)

The SS Series of Unfired Steam Generators (USG) from DHT provide engineers and facility professionals with superior performance in commercial and institutional applications. Designed with high-quality materials, USG vessels meet ASME standards and generate clean steam, making them well suited for sterilized environments such as hospitals, medical centers, and pharmaceutical laboratories. Shell side maximum allowable working pressure is 50 PSIG for generating steam up to 40 PSIG, and 150 PSIG for generating steam up to 120 PSIG.

Installation is simple, as all components are mounted and pre-piped prior to shipment, requiring only connections to services. A microprocessor-based control panel featuring the DHT 700 Series Controller makes operation easy. Numerous options, including alarm bells, remote control, and vacuum breakers, are available.

### STANDARD USG PACKAGE INCLUDES:

- ASME Code Constructed and National Board Registered Vessel
- Fiberglass Insulation
- 20 Gauge Steel Jacket With Enamel Paint
- Structural Steel Support Skid Base
- Boiler Steam / Clean Steam Pressure Gauges
- Manual Blow Down Valve
- Magnetic Level Controller
- Steam Separator
- High Pressure & Low Water Cut Off
- ASME Pressure Relief Valve



### STANDARD FEATURES:

- Alarm Bell
- Remote Control
- Vacuum Breaker
- Unfired Steam Generator Make Up-Water Feed
- High Water Cut-Off Option for Unfired Steam Generator

### OPTIONAL FEATURES:

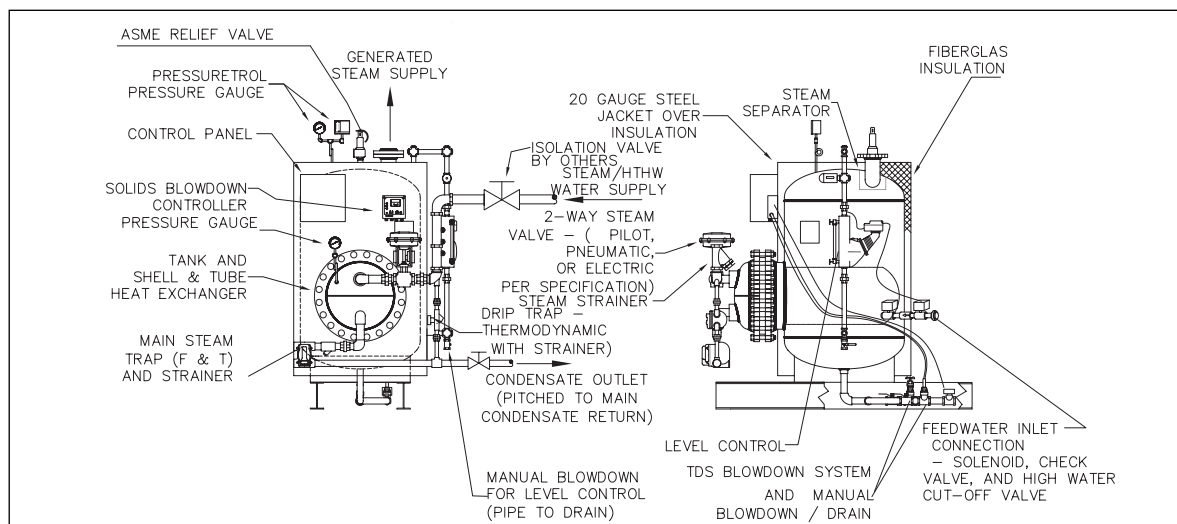
- Centrifugal Boiler Blow-off Condensate Cooler
- Total Dissolved Solids Monitor
- Automatic Blow Down Timer & Automatic Blow Down Valve

## APPLICATIONS:

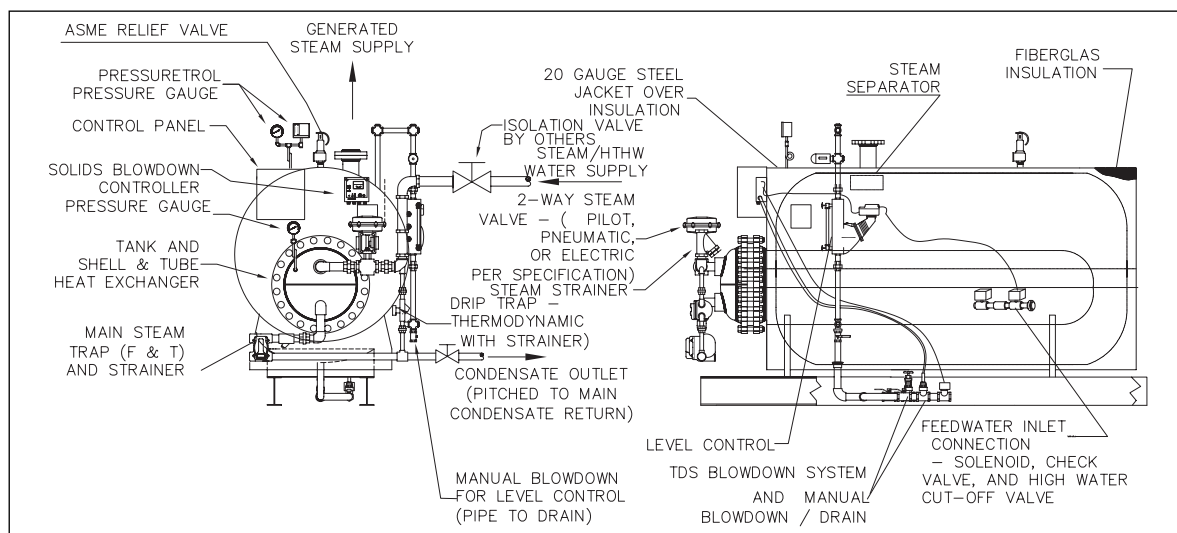
- Ideal for new or retrofit installations
- Suitable for both single or multiple unit installations
- Support variety of applications including:
  - Hospitals/ Medical Centers
  - Hotels
  - Apartment Buildings
  - Universities
  - Nursing Homes
  - Pharmaceutical
  - Food Processing
  - Art Museums
  - Bio-Medical Research Labs
  - Commercial Laundries

## ENERGY SOURCE: STEAM

### Vertical Configuration



### Horizontal Configuration

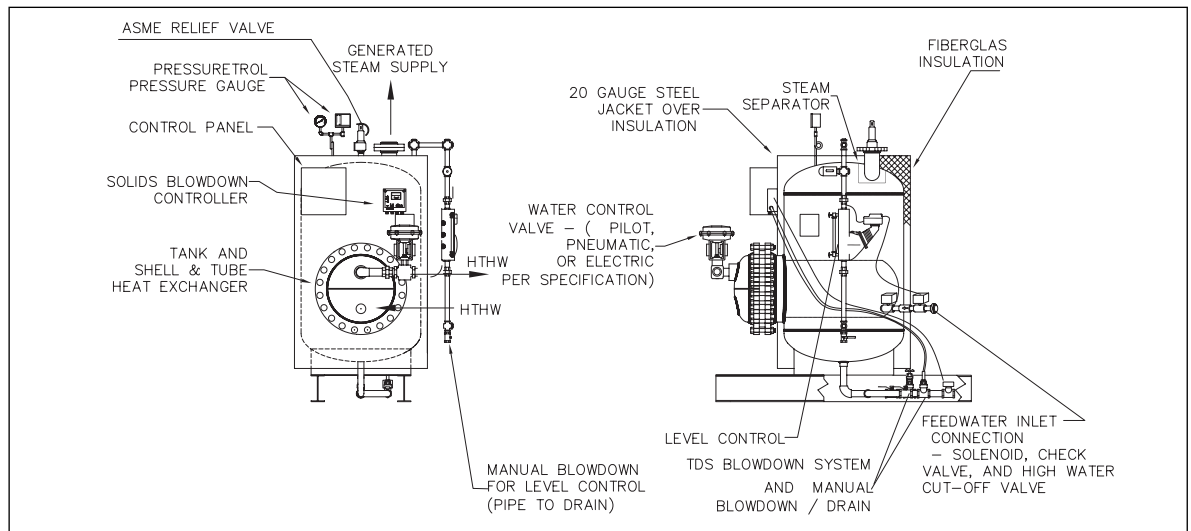


## SPECIFICATIONS:

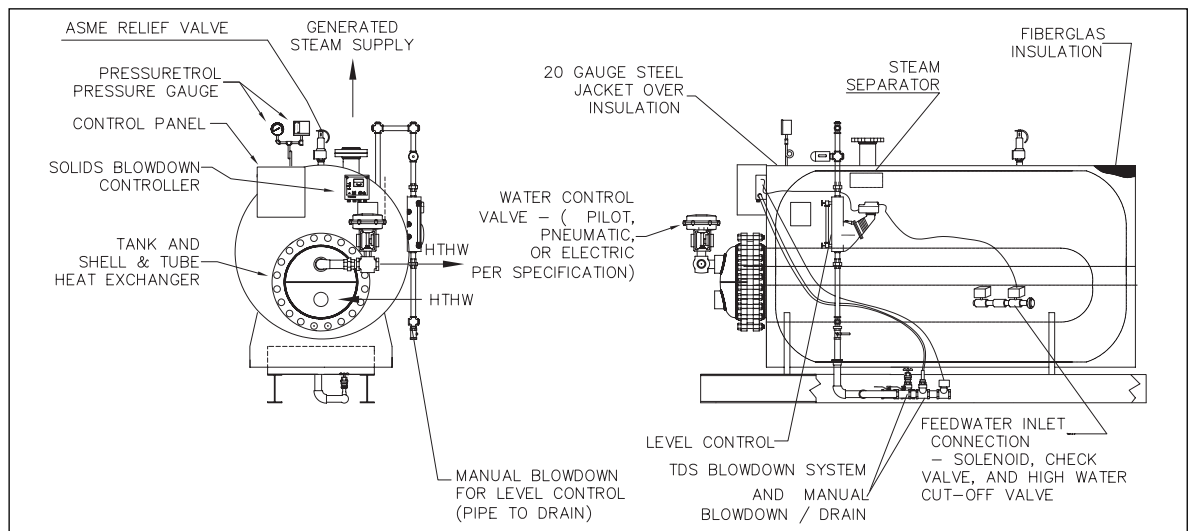
Electrical Requirements	110V/1Ph/60Hz
Full Load Amperage Draw	2 Amps
Max. Primary Steam Supply Pressure	150 PSIG
Max. Clean Steam Pressure	120 PSIG
Adjustable Pressure Control	up to 120 PSIG
Adjustable Over Pressure Limit Control	10-100 PSI (standard) 35-200 PSI (high pressure steam greater than 100 PSI)
Steam Outlet Connections	up to 8 inches
Standard Listing & Approvals	ASME B&PV Code Sec. VIII, Div. 1 Stamped, (UB Stamp)

## ENERGY SOURCE: HIGH TEMP HOT WATER

### Vertical Configuration



### Horizontal Configuration



### SPECIFICATIONS:

Electrical Requirements	110V/1Ph/60Hz
Full Load Amperage Draw	2 Amps
Max. Primary Hot Water Supply Temp	400 F
Max. Clean Steam Pressure	120 PSIG
Adjustable Pressure Control	up to 120 PSIG
Adjustable Over Pressure Limit Control	10-100 PSI (standard) 35-200 PSI (high pressure steam greater than 100 PSI)
Steam Outlet Connections	up to 8 inches
Standard Listing & Approvals	ASME B&PV Code Sec. VIII, Div. 1 Stamped, (UB Stamp)

Note: Dimensions and Specifications subject to change without notice.

## PRODUCT LINE CARD

# COMMERCIAL/ INDUSTRIAL



**ST SERIES**  
SEMI-INSTANTANEOUS WATER HEATERS



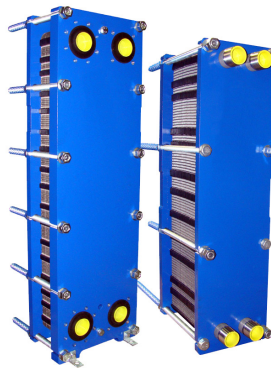
**SP SERIES**  
INDIRECT FIRED, SEMI-INSTANTANEOUS  
WATER HEATERS



**STP SERIES**  
TANK AND PLATE STORAGE WATER HEATER



**SS SERIES**  
UNFIRED STEAM GENERATOR



**PLATE & FRAME HEAT EXCHANGERS**



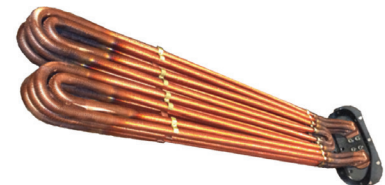
**SHELL & TUBE HEAT EXCHANGERS  
& TUBE BUNDLE REPLACEMENTS**



**BRAZED PLATE HEAT EXCHANGERS**



**HVAC COILS**



**LINDY TANKLESS COILS**

DHT can accept no responsibility for possible errors in catalogs, brochures, and other printed material. DHT reserves the right to alter its products without notice. DHT and the DHT logotype are trademarks of DHT. All rights reserved.



439 Main Road, Rte. 202  
Towaco, NJ 07082  
[www.dhtnet.com](http://www.dhtnet.com)

Phone: 718-386-6666  
Toll Free: 800-221-1522  
Fax: 718-386-7809  
Email: [sales@dhtnet.com](mailto:sales@dhtnet.com)