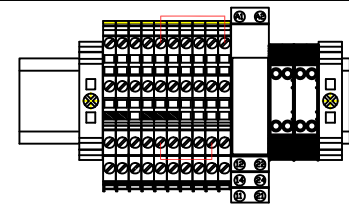
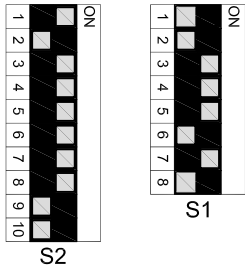
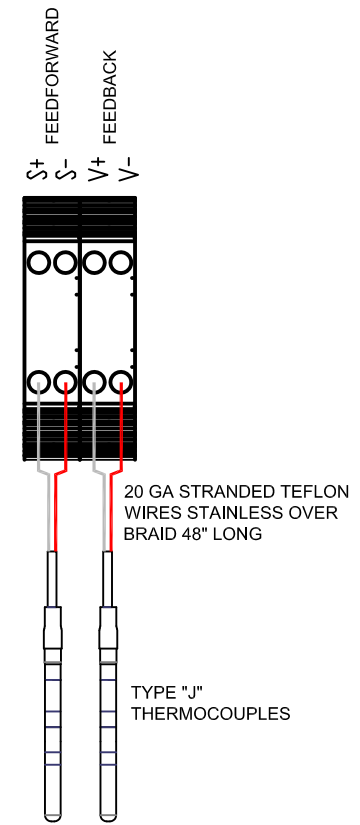
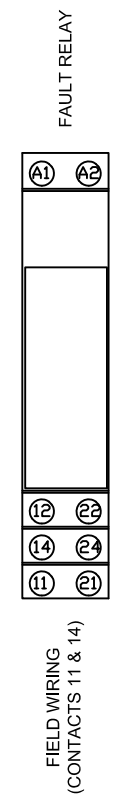
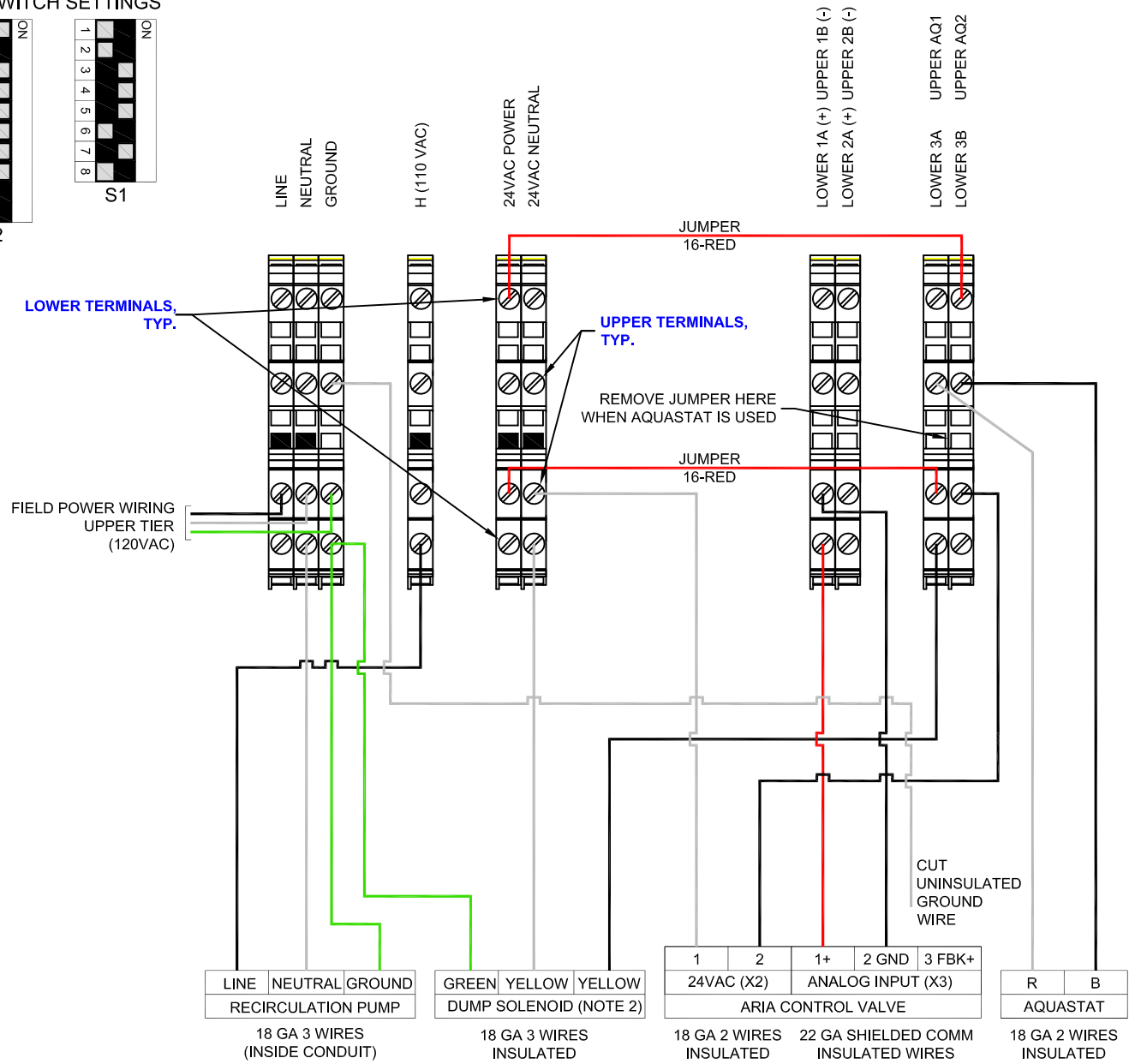


**CONTROL VALVE  
DIP SWITCH SETTINGS**



**TERMINAL BLOCK VIEW**



LINE	NEUTRAL	GROUND	GREEN	YELLOW	YELLOW	1	2	1+	2 GND	3 FBK+	R	B	
18 GA 3 WIRES (INSIDE CONDUIT)			18 GA 3 WIRES INSULATED			18 GA 2 WIRES INSULATED		22 GA SHIELDED COMM INSULATED WIRES			18 GA 2 WIRES INSULATED		
RECIRCULATION PUMP			DUMP SOLENOID (NOTE 2)			ARIA CONTROL VALVE						AQUASTAT	

- NOTES:**
- UNIT SHUTS DOWN UPON LOSS OF ELECTRICAL POWER SUPPLY.
  - DO NOT ROUTE COMMUNICATION WIRING AND MAIN POWER WIRING INSIDE SAME CONDUIT.
  - INSTALL EXTERNAL DEDICATED SINGLE POLE, 10 AMP SHUTOFF SWITCH & CIRCUIT BREAKER IN SERIES WITH THE ELECTRICAL POWER TO THE CONTROL PANEL OF THE UNIT.
  - CONSULT LOCAL AND NATIONAL ELECTRICAL CODES AND STANDARDS.
  - DIP SWITCH SETTINGS ON CONTROL VALVE SHOULD MATCH AS SHOWN ON THIS DRAWING.
  - FAULT RELAY HAS ONE SET OF NORMALLY OPEN CONTACTS AND ONE SET OF NORMALLY CLOSED CONTACTS AVAILABLE FOR FIELD CONNECTIONS.

**DIVERSIFIED  
HEAT TRANSFER, INC.**  
439 MAIN RD. TOWACO NJ 07082  
PHONE: (800) 221-1522 FAX: (855) 221-2400

ST SERIES				
HIGH PRESSURE CONTROL VALVES				
ELECTRICAL WIRING SCHEMATIC DRAWING				
	NAME	DATE	DWG.#	REV
DRAWN BY	SS	05/15/2019		
CHECKED BY	PR	05/20/2019	S-37	B