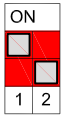
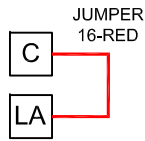


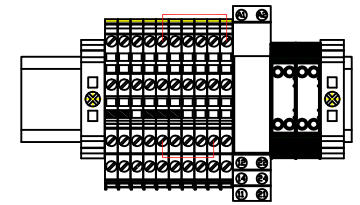
CONTROL VALVE
DIP SWITCHES



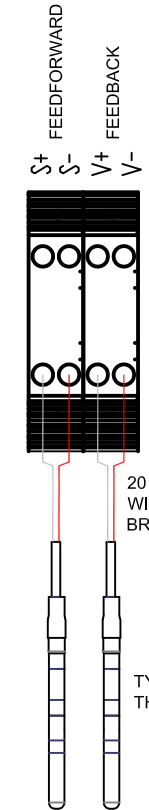
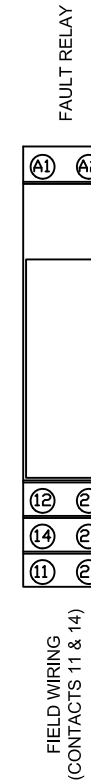
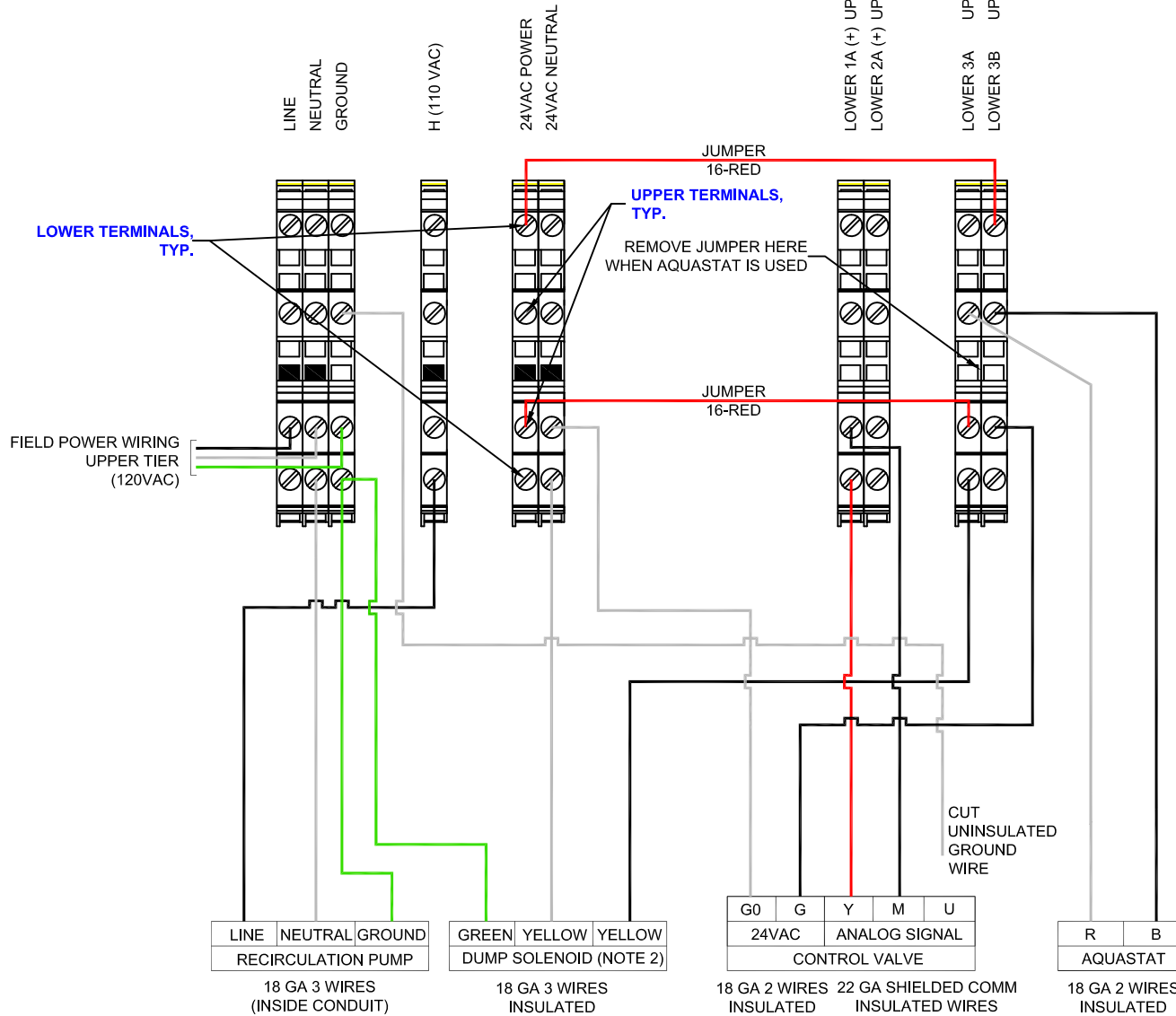
DIP SWITCHES	
1	2
UP	DOWN



REMOTE ENABLE/DISABLE
DRY CONTACTS
(BEHIND PID CONTROLLER)



TERMINAL BLOCK VIEW



****TERMINAL BLOCKS ARE DOUBLE-LEVEL TYPE****

- NOTES:**
1. UNIT SHUTS DOWN UPON LOSS OF ELECTRICAL POWER SUPPLY.
 2. DO NOT ROUTE COMMUNICATION WIRING AND MAIN POWER WIRING INSIDE SAME CONDUIT.
 3. INSTALL EXTERNAL DEDICATED SINGLE POLE, 10 AMP SHUTOFF SWITCH & CIRCUIT BREAKER IN SERIES WITH THE ELECTRICAL POWER TO THE CONTROL PANEL OF THE UNIT.
 4. CONSULT LOCAL AND NATIONAL ELECTRICAL CODES AND STANDARDS.
 5. DIP SWITCH SETTINGS ON CONTROL VALVE SHOULD MATCH AS SHOWN ON THIS DRAWING.
 6. FAULT RELAY HAS ONE SET OF NORMALLY OPEN CONTACTS AND ONE SET OF NORMALLY CLOSED CONTACTS AVAILABLE FOR FIELD CONNECTIONS.



439 MAIN RD. TOWACO NJ 07082
PHONE: (800) 221-1522 FAX: (855) 221-2400

ST SERIES
SKB/SKC/SKD ACTUATOR CONTROL VALVES
ELECTRICAL WIRING SCHEMATIC DRAWING

	NAME	DATE	DWG.#	REV
DRAWN BY	SS	05/15/2019	S-38	C
CHECKED BY	PR	05/20/2019		