

4

3

2

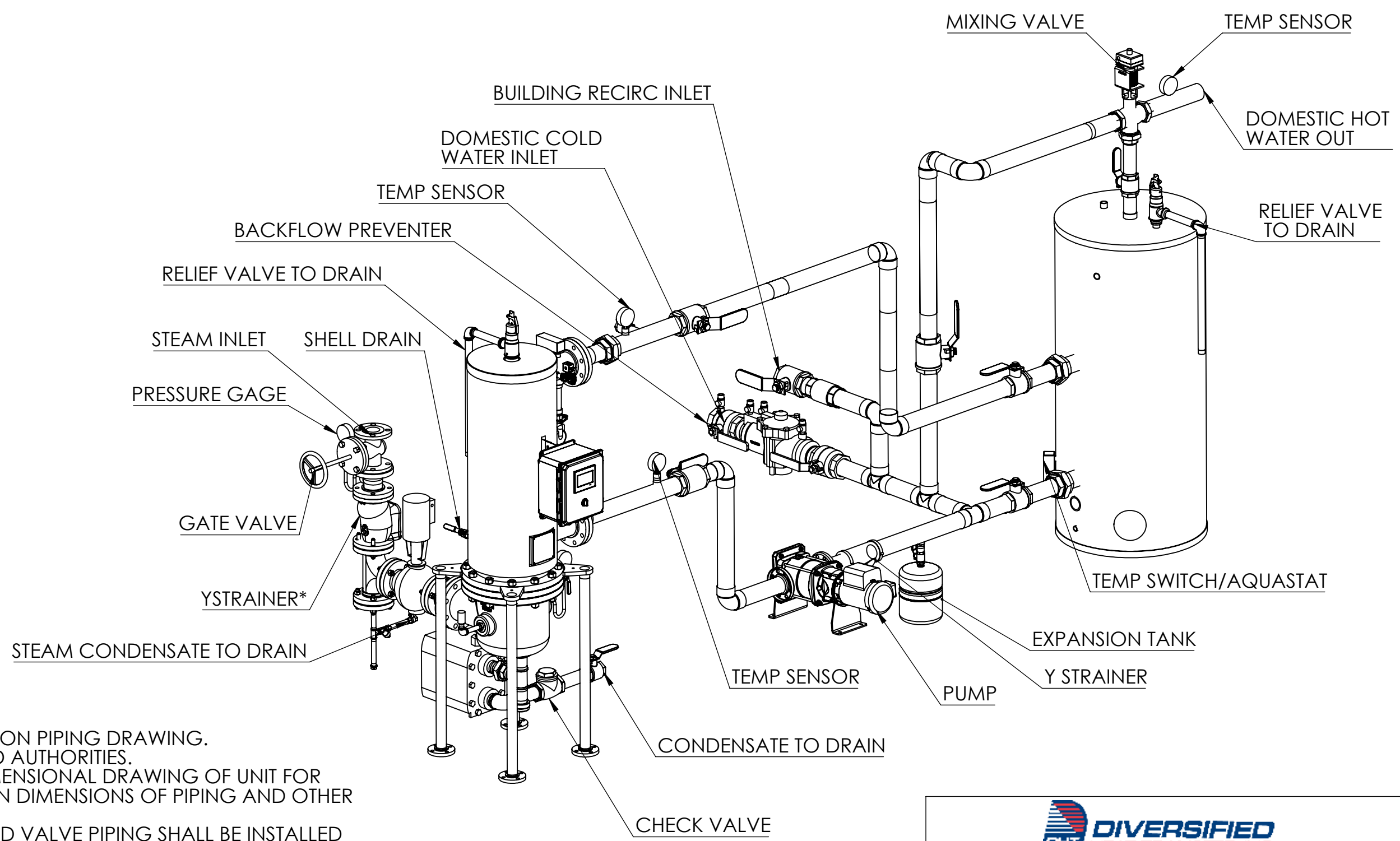
1

B

B

A

A



- NOTES:
1. THIS IS A TYPICAL INSTALLATION PIPING DRAWING. CONSULT LOCAL CODES AND AUTHORITIES.
  2. REFER TO APPROPRIATE DIMENSIONAL DRAWING OF UNIT FOR ACTUAL SIZE AND LOCATION DIMENSIONS OF PIPING AND OTHER CONNECTIONS.
  3. RELIEF VALVE AND SOLENOID VALVE PIPING SHALL BE INSTALLED TO SAFE DRAIN ACCORDING TO APPROPRIATE PLUMBING CODES.
  4. SHELL DRAIN AND CONDENSATE SHALL DRAIN FREELY BY GRAVITY.
  5. PIPING CONNECTIONS TO THE UNIT SHALL BE PROVIDED WITH UNIONS OR FLANGES MAINTAINING ENOUGH CLEARANCES FOR SERVICE. DIELECTRIC FITTINGS ARE SUGGESTED TO MAKE CONNECTIONS BETWEEN DISSIMILAR METALS TO PREVENT GALVANIC CORROSION.
  6. \*ITEMS INCLUDED IN SHIPMENT WITH UNIT FOR FIELD INSTALLATION.
  7. HOSE CONNECTION ON THE UNIT OUTLET IS UTILIZED DURING STARTUP CALIBRATION AND CLEANING.
  8. A CHECK VALVE MAY BE UTILIZED IN PLACE OF BACKFLOW PREVENTER IF PERMITTED BY LOCAL CODES.
  9. PIPING INSTALLATION COMPONENTS ARE SUPPLIED BY OTHERS IN THE FIELD.



439 MAIN RD. TOWACO NJ 07082  
 PHONE: (800) 221-1522 FAX: (718) 386-7809

TITLE		PIPING & INSTAL DRAWING		
DRAWN BY	NAME	DATE	DWG#	REV
CHECKED BY	Admin	01/21/2021	S-52	1
			SHEET 1 OF 1	

4

3

2

1