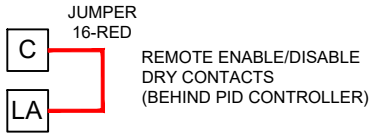
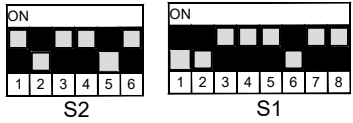
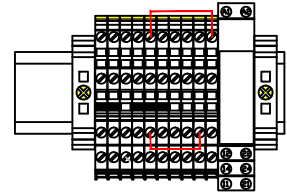


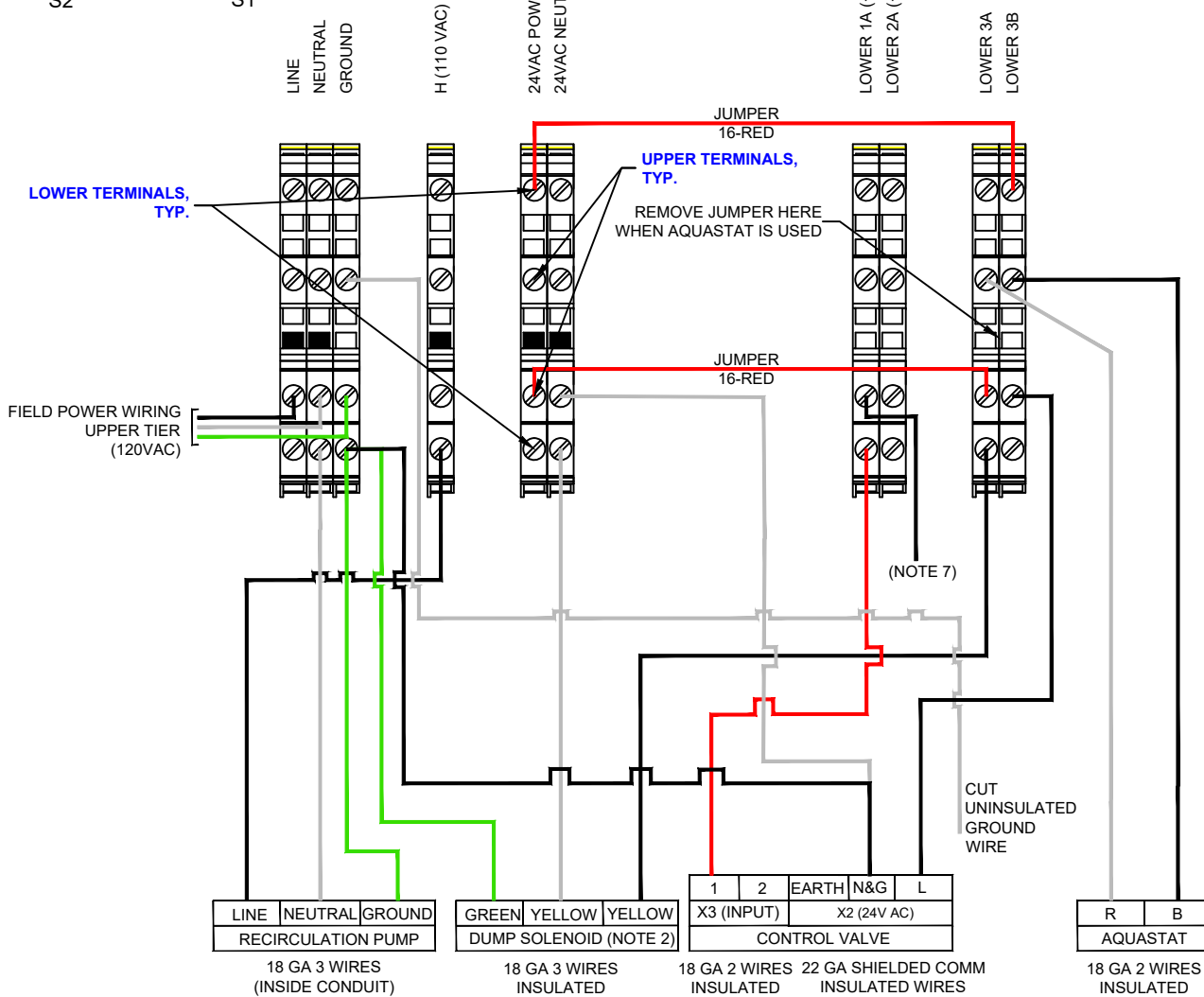
**CONTROL VALVE  
DIP SWITCH SETTINGS**



REMOTE ENABLE/DISABLE  
DRY CONTACTS  
(BEHIND PID CONTROLLER)



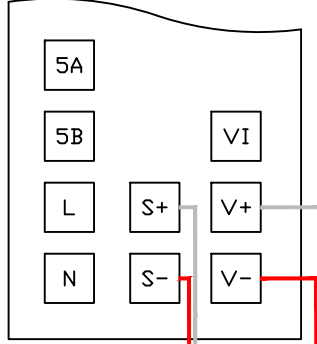
**TERMINAL BLOCK VIEW**



FAULT RELAY



FIELD WIRING  
(CONTACTS 11 & 14)



20 GA STRANDED TEFLON  
WIRES STAINLESS OVER  
BRAID 48" LONG

TYPE "J"  
THERMOCOUPLES

**\*\*TERMINAL BLOCKS ARE DOUBLE-LEVEL TYPE\*\***

- NOTES:**
- UNIT SHUTS DOWN UPON LOSS OF ELECTRICAL POWER SUPPLY.
  - DO NOT ROUTE COMMUNICATION WIRING AND MAIN POWER WIRING INSIDE SAME CONDUIT.
  - INSTALL EXTERNAL DEDICATED SINGLE POLE, 10 AMP SHUTOFF SWITCH & CIRCUIT BREAKER IN SERIES WITH THE ELECTRICAL POWER TO THE CONTROL PANEL OF THE UNIT.
  - CONSULT LOCAL AND NATIONAL ELECTRICAL CODES AND STANDARDS.
  - DIP SWITCH SETTINGS ON CONTROL VALVE SHOULD MATCH AS SHOWN ON THIS DRAWING.
  - FAULT RELAY HAS ONE SET OF NORMALLY OPEN CONTACTS AND ONE SET OF NORMALLY CLOSED CONTACTS AVAILABLE FOR FIELD CONNECTIONS.
  - ON ACTUATOR SIDE OF QUICK CONNECT DO NOT CONNECT 1B-

439 MAIN RD. TOWACO NJ 07082  
PHONE: (800) 221-1522 FAX: (855) 221-2400

ST SERIES  
PSA ACTUATOR CONTROL VALVES  
ELECTRICAL WIRING SCHEMATIC DRAWING

	NAME	DATE	DWG.#	REV
DRAWN BY	SC	10/16/2023	S-56	D
CHECKED BY	-	-		