

4

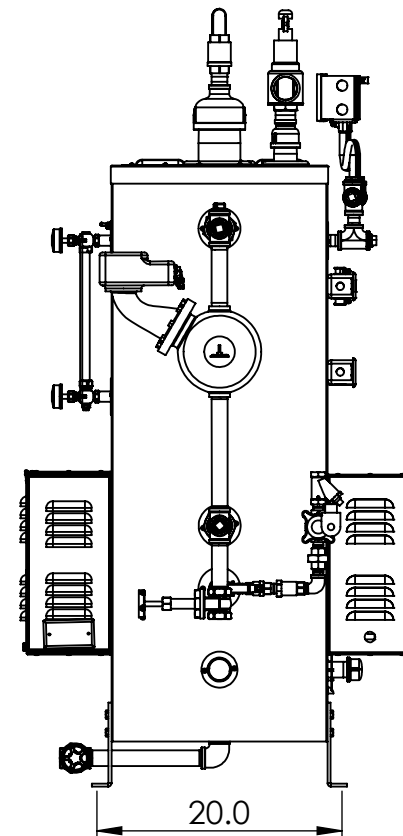
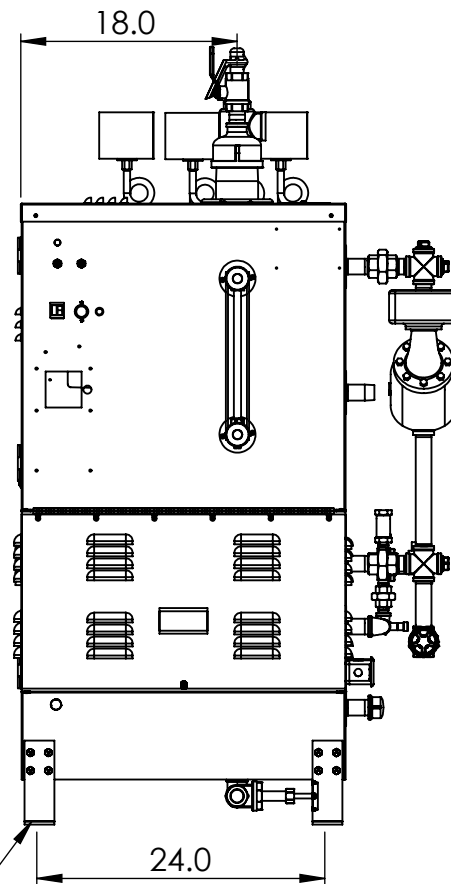
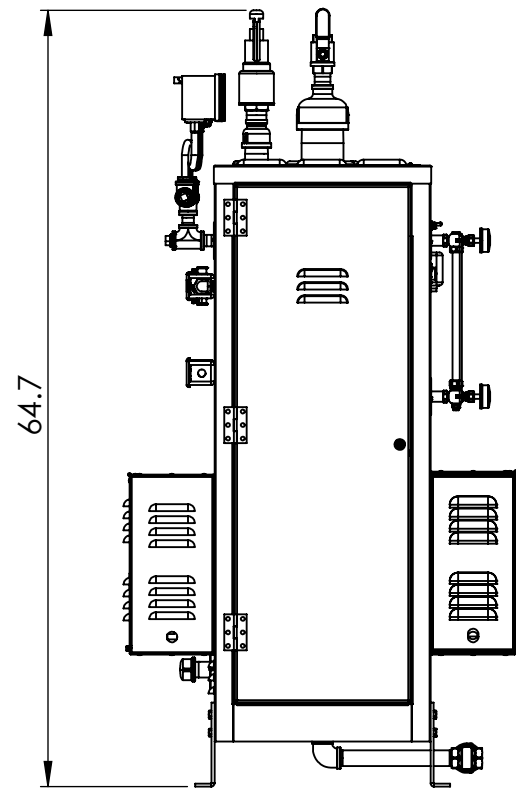
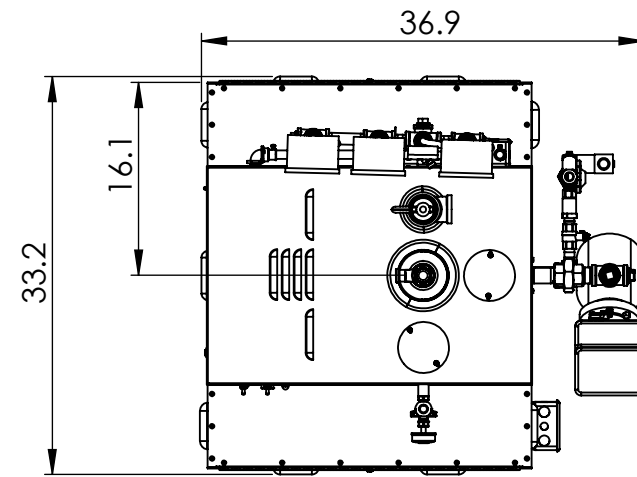
3

2

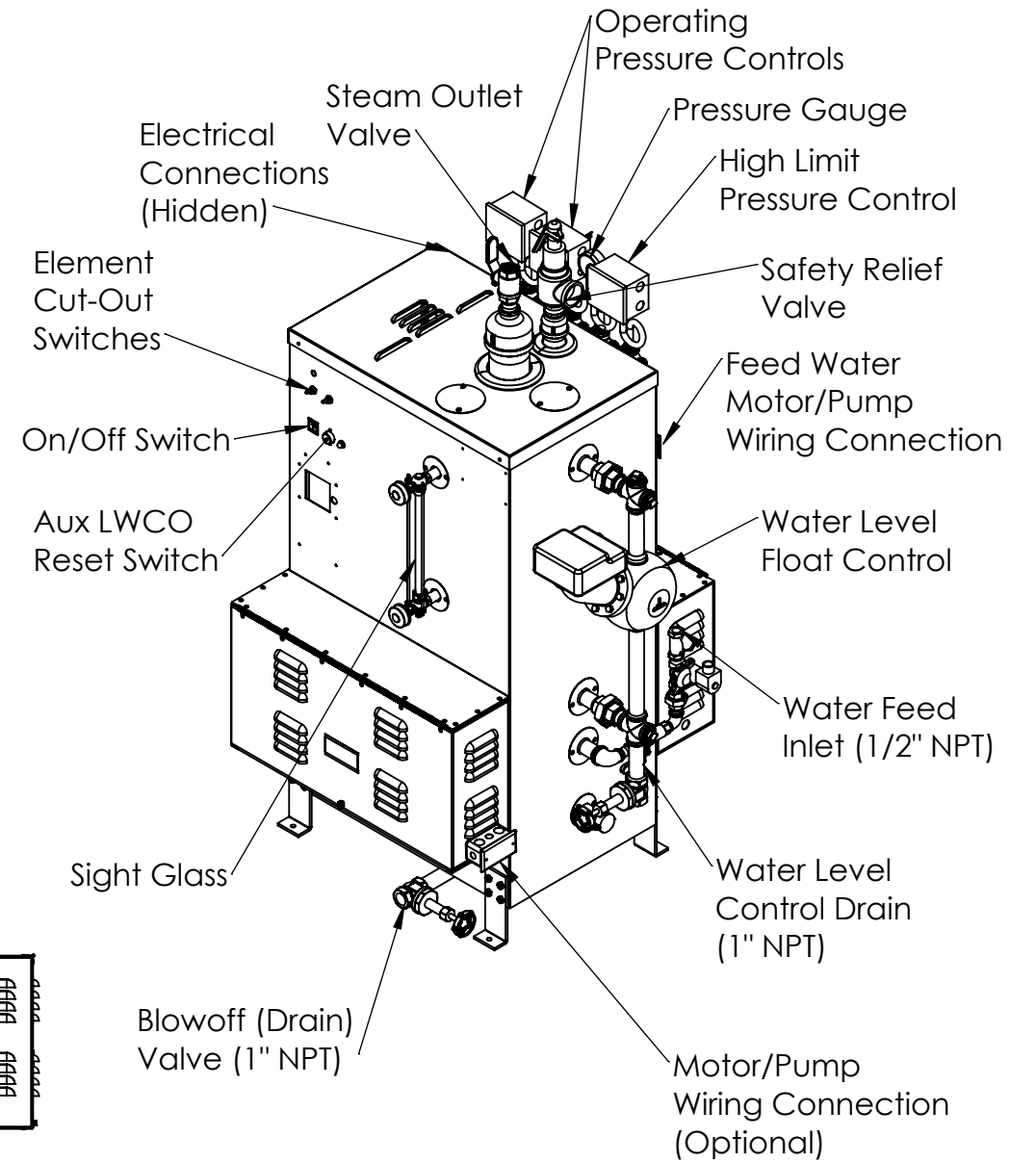
1

Notes:

- 1. For ES85 to ES180, 150 psi trim, 208V & 240V, 3 phase
- 2. Boiler is UL listed to standard 834
- 3. Materials of construction:
 - 1. Vessel and Piping: Carbon Steel
 - 2. Jacket: Stainless Steel
- 4. Pressure vessel built in accordance with ASME Section 1 and carries an "S" stamp
- 5. Completed boiler is built in accordance with ASME Section 1 and carries an "E" Stamp
- 6. Refer to Technical Data Sheet at www.sussmanboilers.com for more information



Mounting Holes:
4 x Ø .437"



DIMENSIONS ARE SHOWN IN INCHES [CENTIMETERS]
TOLERANCES ARE AS FOLLOWS UNLESS OTHERWISE SPECIFIED
X.XX X.XXX X.XXXX ANGULAR FINISH
±.12 ±.031 ±.0156 ±1.0° 250

REMOVE AND DEBURR SHARP EDGES AND CORNERS
ALL DIMENSIONS ARE AFTER FINISH OR PLATING
REFERENCE DIMENSIONS ARE SHOWN IN PARENTHESES ()
CRITICAL DIMENSIONS ARE SHOWN IN ◻

THIS DRAWING AND/OR SPECIFICATIONS ARE THE PROPERTY OF DIVERSIFIED HEAT TRANSFER INC. THIS CONFIDENTIAL AND PROPRIETARY INFORMATION SHALL NOT BE USED, COPIED OR REPRODUCED IN ANY MEANS AS THE BASIS FOR MANUFACTURE OR SALE OF APPARATUS WITHOUT WRITTEN AUTHORIZATION FROM OWNER.



439 MAIN RD. TOWACO NJ 07082
PHONE: (800) 221-1522 FAX: (718) 386-7809

TITLE ES85-ES180 ELECTRIC STEAM BOILER,
150 PSI 208V & 240V 3ph

A	FOR RELEASE	JH	5/31/24
REV	ECN	REVISION DESCRIPTION	NAME DATE

THIRD ANGLE PROJECTION	DWG. SCALE	MATERIAL SPEC:	NAME	DATE	DWG#	REV
	1:16		JH	5/31/2024	ES85-ES180	
			CHECKED BY		SHEET 1 OF 2	

4

3

2

1

4

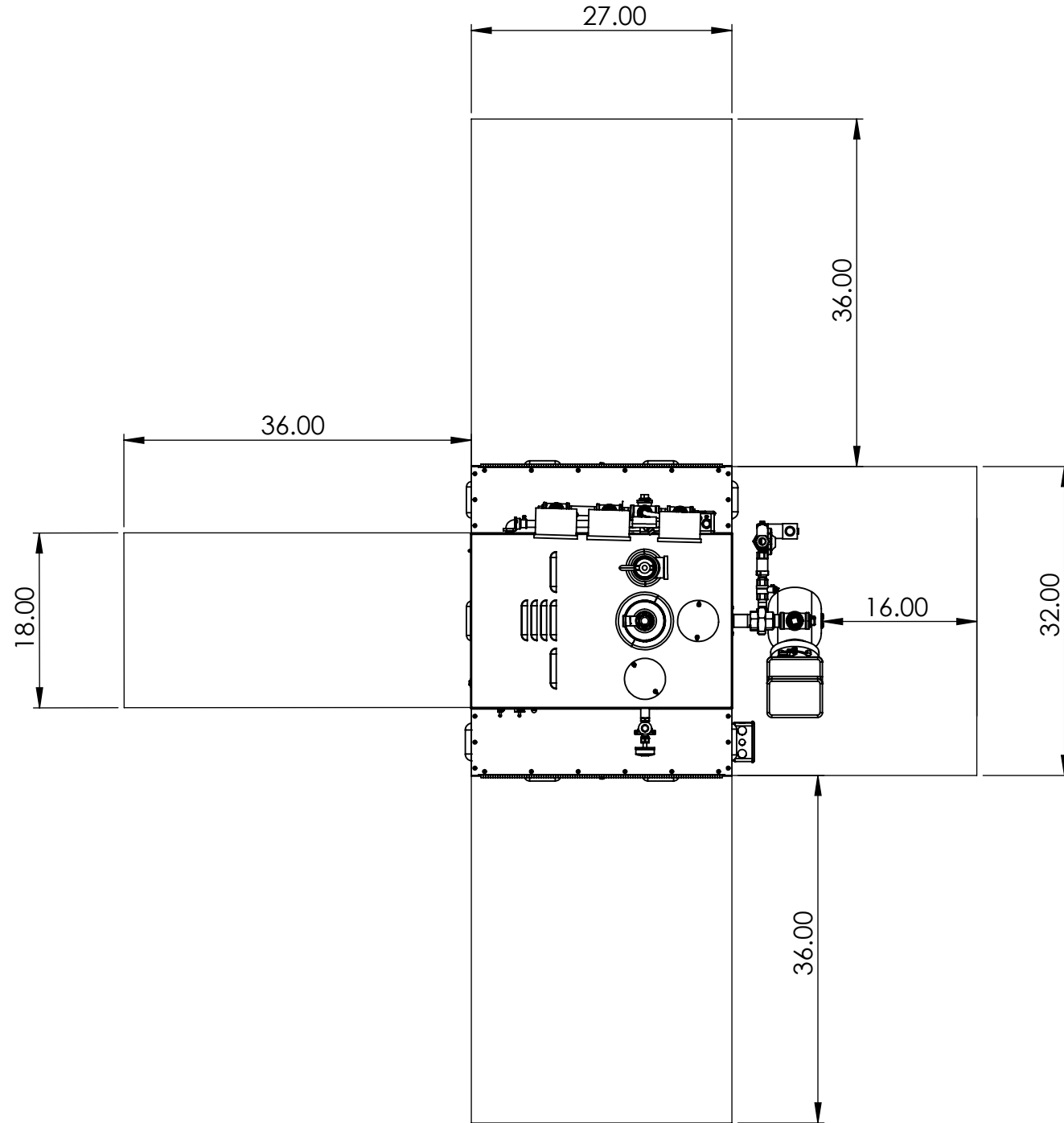
3

2

1

- Notes:
 1. Minimum 1" clearance to all combustibile materials
 2. Service clearances to be in conformance to NEC requirements

Service Clearance Requirements



Boiler	kW	Pressure	Elements	Voltage	Amp Draw	Control Voltage	Steam Flowrate (lbs/hr)	Feed Water Consumption (GPM)	Reccomended Min. Feed Water Rate (gpm)
ES85	84	150	4 x 18kw 1 x 12kw	208	233	120	256	0.51	1.52
				240	202				
ES100	108		6 x 18kw	208	300		325	0.65	1.95
				240	260				
ES135	142		8 x 18kw	208	395		433	0.87	2.60
				240	342				
ES160	157.5		7 x 22.5kw	208	438		475	0.95	2.90
				240	379				
ES180	180		8 x 22.5kw	208	500		542	1.09	3.30
				240	434				

Boiler	Total Volume (gal)	Operating Volume (gal)	Dry Weight	Wet Weight	Shipping Weight	Steam Outlet Size (NPT)	Water Feed Inlet Size (NPT)	Drain Outlet Size (NPT)	Safety Valve Outlet Size (NPT)
ES85-ES100	36.5	22.8	638	836	720	3/4"	1/2"	1"	3/4"
ES135-ES180						1"			

Note: All weights do not include options. See option drawings for additional weights

DIMENSIONS ARE SHOWN IN INCHES (CENTIMETERS)
 TOLERANCES ARE AS FOLLOWS UNLESS OTHERWISE SPECIFIED
 X.XX X.XXX X.XXXX ANGULAR FINISH
 ±.12 ±.031 ±.0156 ±1.0° 250
 REMOVE AND DEBURR SHARP EDGES AND CORNERS
 ALL DIMENSIONS ARE AFTER FINISH OR PLATING
 REFERENCE DIMENSIONS ARE SHOWN IN PARENTHESES ()
 CRITICAL DIMENSIONS ARE SHOWN IN

THIS DRAWING AND/OR SPECIFICATIONS ARE THE PROPERTY OF DIVERSIFIED HEAT TRANSFER INC. THIS CONFIDENTIAL AND PROPRIETARY INFORMATION SHALL NOT BE USED, COPIED OR REPRODUCED IN ANY MEANS AS THE BASIS FOR MANUFACTURE OR SALE OF APPARATUS WITHOUT WRITTEN AUTHORIZATION FROM OWNER.



439 MAIN RD. TOWACO NJ 07082
 PHONE: (800) 221-1522 FAX: (718) 386-7809

TITLE ES85-ES180 ELECTRIC STEAM BOILER,
 150 PSI 208V & 240V 3ph

A		FOR RELEASE	JH	5/31/24
REV	ECN	REVISION DESCRIPTION	NAME	DATE

THIRD ANGLE PROJECTION	DWG. SCALE	MATERIAL SPEC:	NAME	DATE	DWG#	REV
	1:16		JH	5/31/2024	ES85-ES180	
			CHECKED BY		SHEET 2 OF 2	

4

3

2

1