

4

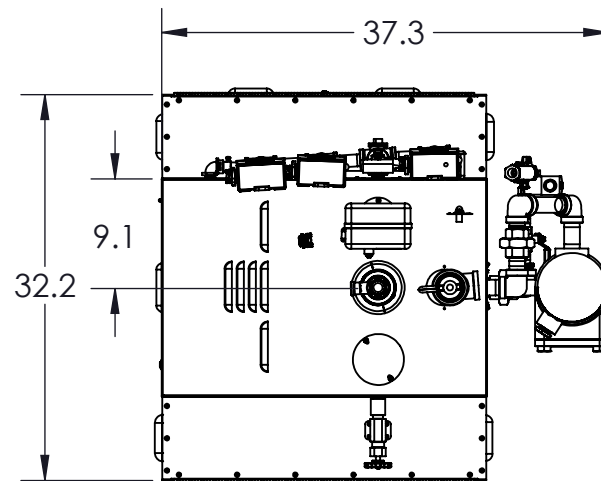
3

2

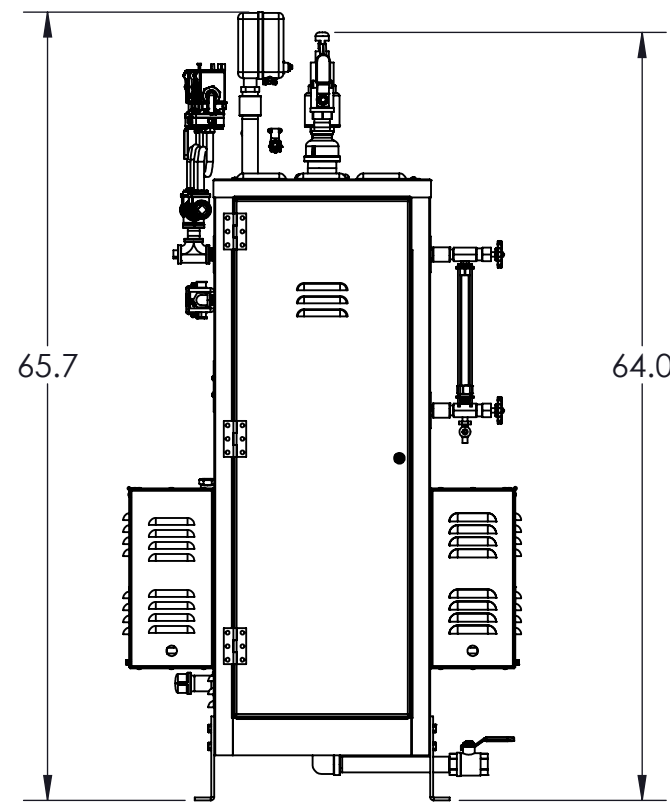
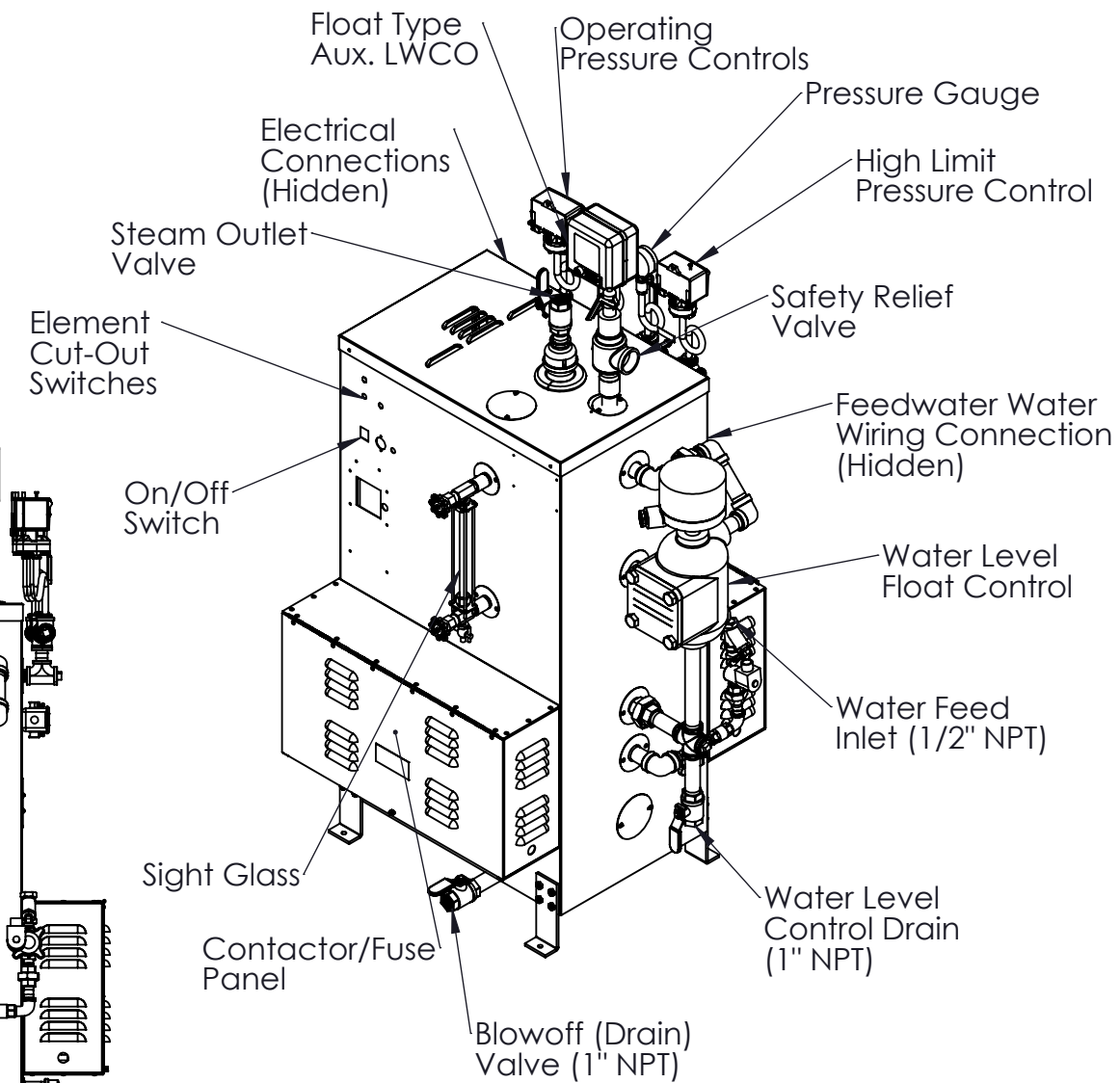
1

Notes:

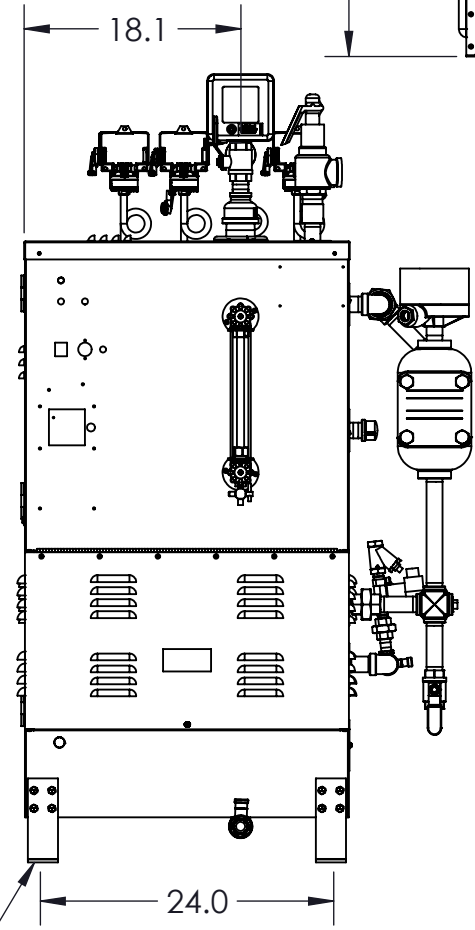
- 1. Materials of construction:
 - 1. Vessel and Piping: Stainless Steel
 - 2. Jacket: Stainless Steel
- 2. Pressure vessel built in accordance with ASME Section 1 and carries an "M" stamp
- 3. Completed boiler is built in accordance with ASME Section 1 and carries an "E" Stamp
- 4. Boiler is UL listed to standard 834
- 5. For SSB135 to SSB180, 15 and 100psi trims, 208V & 240V, 3ph
- 6. Refer to Technical Data Sheet at www.sussmanboilers.com for more information



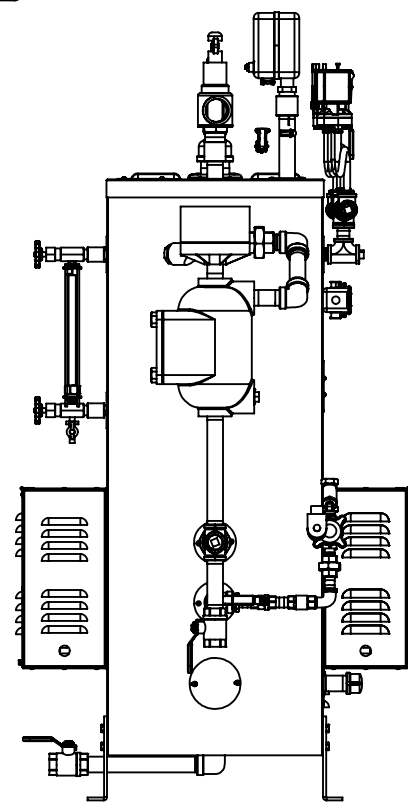
Top



Left



Front



Right

Mounting Holes: 4 x Ø .037"

DIMENSIONS ARE SHOWN IN INCHES [CENTIMETERS]
 TOLERANCES ARE AS FOLLOWS UNLESS OTHERWISE SPECIFIED
 X.XX X.XXX X.XXXX ANGULAR FINISH
 ±.12 ±.031 ±.0156 ±1.0° 250
 REMOVE AND DEBURR SHARP EDGES AND CORNERS
 ALL DIMENSIONS ARE AFTER FINISH OR PLATING
 REFERENCE DIMENSIONS ARE SHOWN IN PARENTHESES ()
 CRITICAL DIMENSIONS ARE SHOWN IN

THIS DRAWING AND/OR SPECIFICATIONS ARE THE PROPERTY OF DIVERSIFIED HEAT TRANSFER INC. THIS CONFIDENTIAL AND PROPRIETARY INFORMATION SHALL NOT BE USED, COPIED OR REPRODUCED IN ANY MEANS AS THE BASIS FOR MANUFACTURE OR SALE OF APPARATUS WITHOUT WRITTEN AUTHORIZATION FROM OWNER.



439 MAIN RD. TOWACO NJ 07082
 PHONE: (800) 221-1522 FAX: (718) 386-7809

TITLE SSB135-SSB180 Electric Steam Boiler
 15PSI, 50PSI, 100PSI, 208V & 240V, 3 Ph

A		FOR RELEASE	JH	2/14/24
REV	ECN	REVISION DESCRIPTION	NAME	DATE

THIRD ANGLE PROJECTION	DWG. SCALE	MATERIAL SPEC:
	1:16	

	NAME	DATE	DWG#	REV
DRAWN BY	JH	2/14/2024		
CHECKED BY			SHEET 1 OF 2	

4

3

2

1

4

3

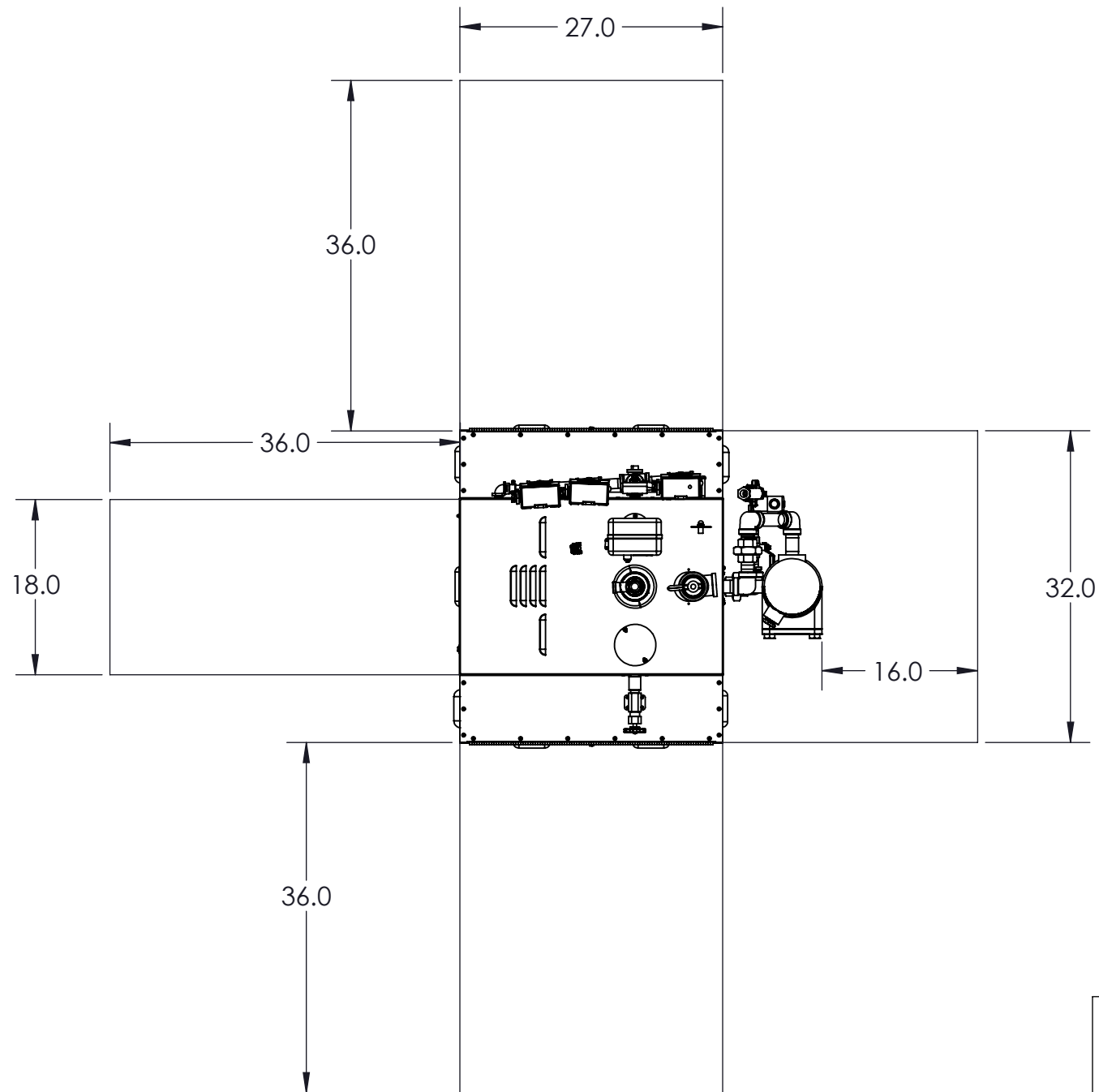
2

1

Notes:

1. Minimum 1" clearance to all combustible materials
2. Service clearances to be in conformance to NEC requirements

Service Clearance Requirements



Boiler	kW	Pressure	Elements	Voltage	Amp Draw	Control Voltage	Steam Flowrate (lbs/hr)	Feed Water Consumption (GPM)	Reccomended Min. Feed Water Rate (gpm)
SSB135	142	15 100	8 x 18kw	208	395	120	433	0.87	2.6
SSB160	157.5		7 x 22.5kw	208	438				
SSB180	180		8 x 22.5kw	208	500				
				240	342				
				240	379		475	0.95	2.9
				240	434		542	1.09	3.3
Boiler	Total Volume (gal)	Operating Volume (gal)	Dry Weight	Wet Weight	Shipping Weight	Steam Outlet Size (NPT)	Water Feed Inlet Size (NPT)	Drain Outlet Size (NPT)	Safety Valve Outlet Size (NPT)
SSB135	36.5	22.8	638	836	720	1-1/2" (15) 1" (100)	1/2"	1"	1-1/2" (15) 1-1/4" (100)
SSB160									
SSB180									
Note: All weights do not include options. See option drawings for additional weights									

DIMENSIONS ARE SHOWN IN INCHES (CENTIMETERS)
TOLERANCES ARE AS FOLLOWS UNLESS OTHERWISE SPECIFIED
X.XX X.XXX X.XXXX ANGULAR FINISH
±.12 ±.031 ±.0156 ±1.0° 250
REMOVE AND DEBURR SHARP EDGES AND CORNERS
ALL DIMENSIONS ARE AFTER FINISH OR PLATING
REFERENCE DIMENSIONS ARE SHOWN IN PARENTHESES ()
CRITICAL DIMENSIONS ARE SHOWN IN

THIS DRAWING AND/OR SPECIFICATIONS ARE THE PROPERTY OF DIVERSIFIED HEAT TRANSFER INC. THIS CONFIDENTIAL AND PROPRIETARY INFORMATION SHALL NOT BE USED, COPIED OR REPRODUCED IN ANY MEANS AS THE BASIS FOR MANUFACTURE OR SALE OF APPARATUS WITHOUT WRITTEN AUTHORIZATION FROM OWNER.



439 MAIN RD. TOWACO NJ 07082
PHONE: (800) 221-1522 FAX: (718) 386-7809

TITLE
SSB135-SSB180 Electric Steam Boiler
15PSI, 50PSI, 100PSI, 208V & 240V, 3 Ph

A	FOR RELEASE	JH	2/14/24	THIRD ANGLE PROJECTION	DWG. SCALE	MATERIAL SPEC:	NAME	DATE	DWG#	REV
REV	ECN	REVISION DESCRIPTION	NAME	DATE	1:16		DRAWN BY	JH	2/14/2024	
							CHECKED BY		SHEET 2 OF 2	

4

3

2

1