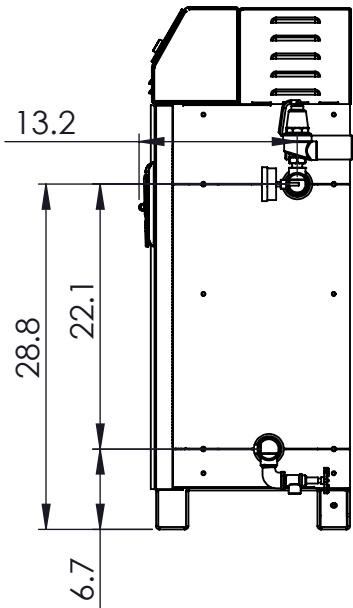
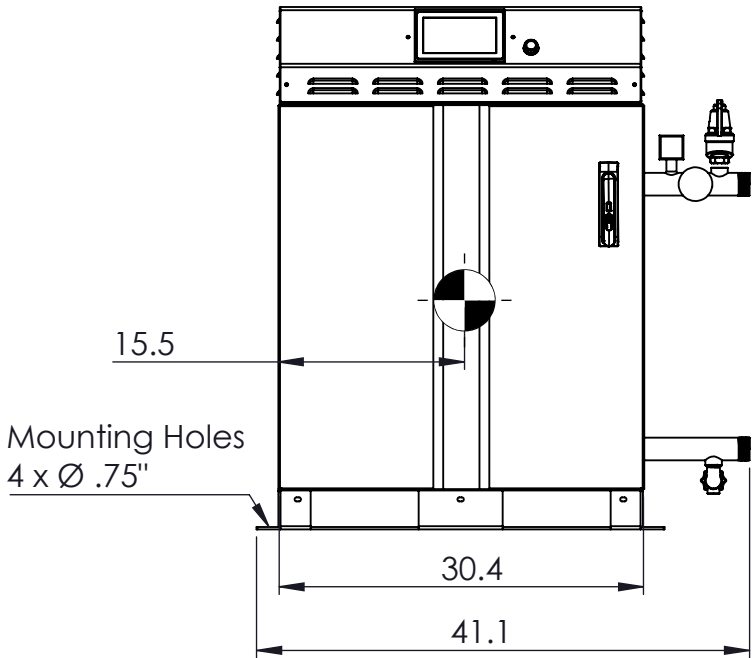
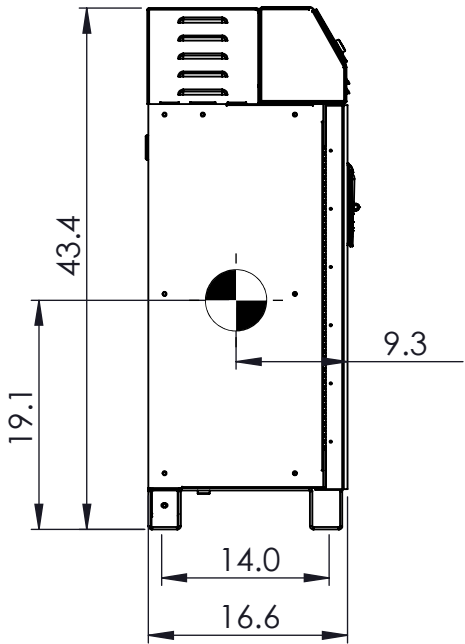
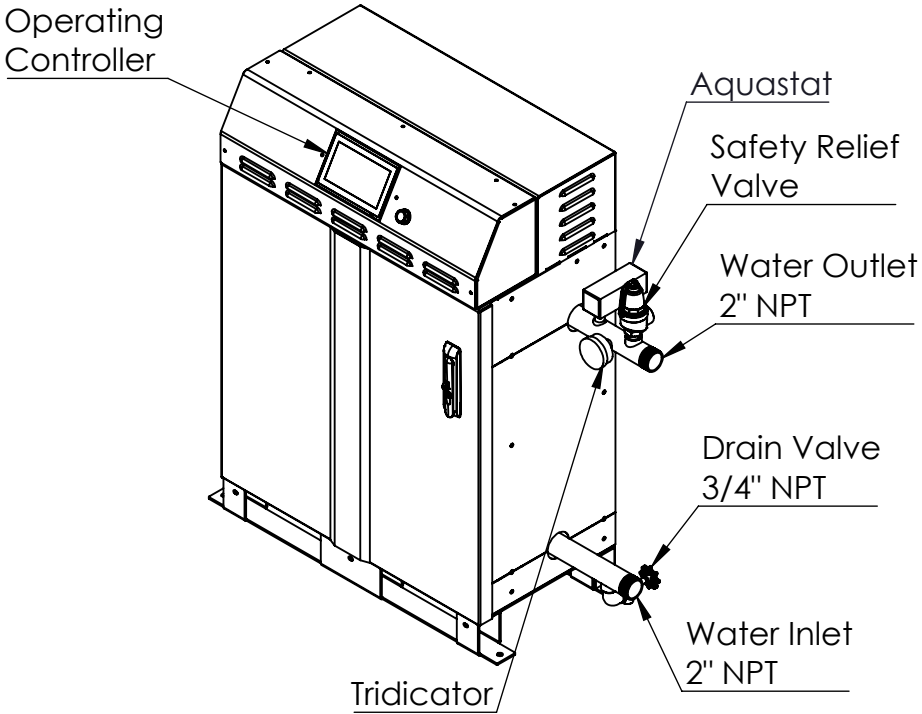
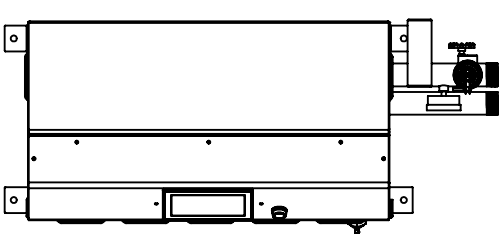


- NOTES:
1. MATERIALS OF CONSTRUCTION
 1. VESSEL AND PIPING: CARBON STEEL AND CAST IRON
 2. JACKET: STAINLESS STEEL AND PAINTED STEEL
 2. PRESSURE VESSEL BUILT IN ACCORDANCE WITH ASME SECTION IV AND CARRIES AN "H" STAMP
 3. MAXIMUM ALLOWABLE WORKING PRESSURE UP TO 150PSI
 4. BOILER IS UL LISTED TO STANDARD 834
 5. FOR EWx30- EWx120 ALL VOLTAGES
 6. BACNET IP AND MSTP, MODBUS RS485, AND 4-20 mA REMOTE SET POINT STANDARD
 7. REFER TO THE INSTALLATION AND OPERATION MANUAL FOR MORE INFORMATION

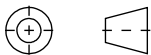
Center of Gravity (in)		
Length	Width	Height
15.5	9.3	19.1



DIMENSIONS ARE SHOWN IN INCHES [CENTIMETERS]
TOLERANCES ARE AS FOLLOWS UNLESS OTHERWISE SPECIFIED
X.XX X.XXX X.XXXX ANGULAR FINISH
±.12 ±.031 ±.0156 ±1.0° 250
REMOVE AND DEBURR SHARP EDGES AND CORNERS
ALL DIMENSIONS ARE AFTER FINISH OR PLATING
REFERENCE DIMENSIONS ARE SHOWN IN PARENTHESES ()
CRITICAL DIMENSIONS ARE SHOWN IN

THIS DRAWING AND/OR SPECIFICATIONS ARE THE PROPERTY OF DIVERSIFIED HEAT TRANSFER INC. THIS CONFIDENTIAL AND PROPRIETARY INFORMATION SHALL NOT BE USED, COPIED OR REPRODUCED IN ANY MEANS AS THE BASIS FOR MANUFACTURE OR SALE OF APPARATUS WITHOUT WRITTEN AUTHORIZATION FROM OWNER.

THIRD ANGLE PROJECTION



DWG. SCALE

1:16

MATERIAL SPEC:



439 MAIN RD. TOWACO NJ 07082
PHONE: (800) 221-1522 FAX: (718) 386-7809

TITLE EWx30-EWx120 ELECTRIC WATER BOILERS

DRAWN BY

JH

DATE

11/25/25

DWG#

EWx30-EWx120

REV

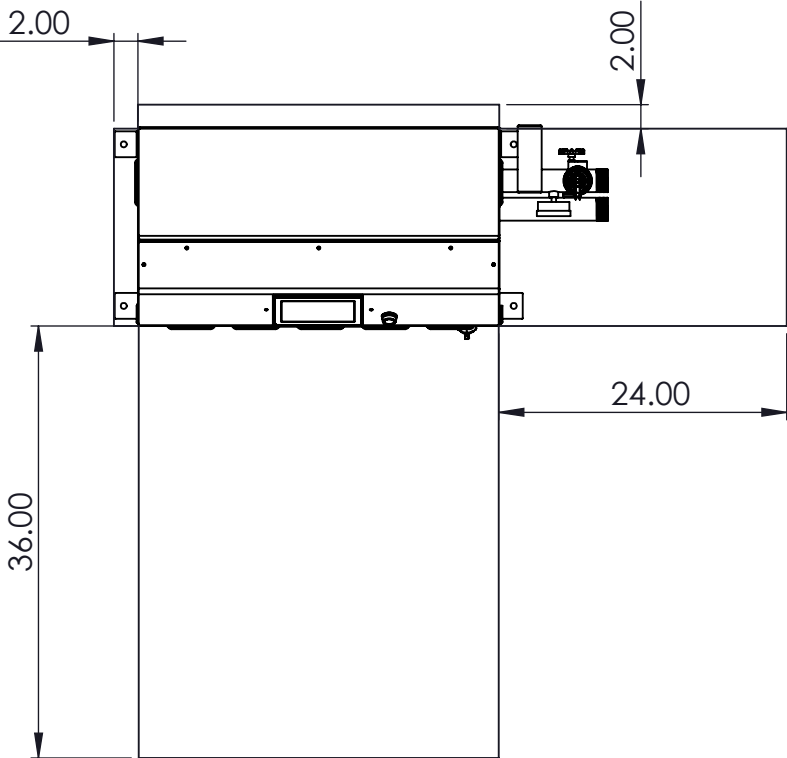
A

CHECKED BY

SHEET 1 OF 2

NOTES:
1. SERVICE CLEARANCES TO BE IN CONFORMANCE TO NEC REQUIREMENTS. ALLOW A MINIMUM OF 36" CLEARANCE IN FRONT OF DOORS FOR SERVICING OF HEATING ELEMENTS. RECOMMENDED 24" CLEARANCE FOR OTHER SIDES OF BOILER FOR SERVICING.
2. MINIMUM 2" CLEARANCE TO ALL COMBUSTIBLE MATERIALS
3. MINIMUM 30" CLEARANCE ON TOP TO COMBUSTIBLE MATERIALS

Service Clearance Requirements



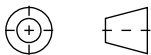
Boiler	kW	Elements	Voltage	Amp Draw	MBH	Min Flow (GPM)	Max Flow (GPM)
EWx30	30	1x 30kW	208	83(3P)/144(1P)	102.4	4	41
			240	72(3P)/125 (1P)			
			480	36			
			600	29			
EWx60	60	2x 30kW	208	167	204.7	4	41
			240	144			
			480	72			
			600	58			
EWx90	90	3x 30kW	208	250	307.1	4	41
			240	217			
			480	108			
			600	87			
EWx120	120	4x 30kW	208	333	409.4	4	41
			240	289			
			480	145			
			600	116			

Boiler	Dry Weight (LBS)	Wet Weight (LBS)	Total Volume (Gal)	Boiler Headers Size (NPT)	Drain Size (NPT)	Safety Valve Outlet Size (NPT)
EWx30	425	500	9.3	2"	0.75"	1.25" (50,60,75 PSI)
EWx60	440	515				1" (100 PSI)
EWx90	455	530				0.75" (125,150 PSI)
EWx120	470	545				

DIMENSIONS ARE SHOWN IN INCHES [CENTIMETERS]
TOLERANCES ARE AS FOLLOWS UNLESS OTHERWISE SPECIFIED
X.XX X.XXX X.XXXX ANGULAR FINISH
± .12 ± .031 ± .0156 ±1.0° 250
REMOVE AND DEBURR SHARP EDGES AND CORNERS
ALL DIMENSIONS ARE AFTER FINISH OR PLATING
REFERENCE DIMENSIONS ARE SHOWN IN PARENTHESES ()
CRITICAL DIMENSIONS ARE SHOWN IN

THIS DRAWING AND/OR SPECIFICATIONS ARE THE PROPERTY OF DIVERSIFIED HEAT TRANSFER INC. THIS CONFIDENTIAL AND PROPRIETARY INFORMATION SHALL NOT BE USED, COPIED OR REPRODUCED IN ANY MEANS AS THE BASIS FOR MANUFACTURE OR SALE OF APPARATUS WITHOUT WRITTEN AUTHORIZATION FROM OWNER.

THIRD ANGLE PROJECTION



DWG. SCALE

1:16

MATERIAL SPEC:



439 MAIN RD. TOWACO NJ 07082
PHONE: (800) 221-1522 FAX: (718) 386-7809

TITLE EWx30-EWx120 ELECTRIC WATER BOILERS

NAME

DATE

DRAWN BY

JH

11/25/25

CHECKED BY

DWG#

EWx30-EWx120

SHEET 2 OF 2

REV

A