




COMPANY PROFILE

COMMERCIAL / INDUSTRIAL



EXCEEDING CUSTOMER EXPECTATIONS SINCE 1932.

www.dhtnet.com



INNOVATION & ENGINEERING

How we set ourselves apart.

Our name stands for performance, competence, and reliability in a wide range of products— since 1932. We know the industries, the markets, and technologies. We maintain close relationships and are a partner to our customers. With over 90 years of experience, we are looking towards the future, staying connected and surpassing expectations.

TABLE OF CONTENTS

INNOVATION & ENGINEERING 02

CONTENTS..... 03

ABOUT US 04

OUR CORE VALUES 05

KEY MILESTONES 06

THE DHT TEAM 07

OUR FACILITY 08

PRINCIPAL INSPECTION & TESTING INSTRUMENT..... 08

FACILITY & MACHINING EQUIPMENT..... 09

OUR PRODUCTS 10

CERTIFICATIONS 12

INDUSTRIES 15

CUSTOMERS 16

REFERENCE LIST 17

PROJECTS 18



ABOUT US

DHT is a leading manufacturing company of heat transfer equipment and systems for the residential, commercial, and industrial markets.



OUR STRENGTHS

- 90 Years of Operating Experience
- Management Team With Over 200+ Years Combine Experience.
- Highly Skilled Personnel
- Unmatched Quality
- Our Customers and Customer Loyalty

VISION

To become a world-class manufacturer of innovative heat transfer products globally.

MISSION

To supply our valued customers high quality and intelligently designed, Electric and Indirect Fired Heat Transfer Solutions, for a diverse energy future.

OUR CORE VALUES

DHT enjoys a strong reputation for integrity and commitment. Our core values are designed to help each one of us meet that obligation. We believe that when we apply these values in our everyday work, our company is positioned for success.



STRUCTURE

Be a high-performing and highly engaged diverse team that understands each of their roles and responsibilities within the organizational structure which in turn will strengthen employee talent to allow for greater customer focus, flexibility, and profitability.



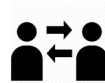
CODE OF ETHICS

We conduct ourselves and our business affairs in accordance with the highest ethical standards, and in compliance with all applicable laws, striving always to be a respected corporate citizen.



QUALITY OF EXCELLENCE

We set exacting standards and strive for consistency and precision in everything we do. We are committed to continuously improving our capabilities. We passionately strive to exceed the expectations of our customers, colleagues, and shareholders and to win in the marketplace.



COMMUNICATION

Openly communicating, actively listening, challenging ideas and processes, and setting reasonable expectations to achieve the best possible outcome.



SAFETY

We share a personal and professional commitment to protecting the safety and health of our employees, our engineers/contractors, our customers and the people of the communities in which we operate.



CULTURE

Striving for a workplace where opportunity, openness, enthusiasm, diversity, teamwork, accountability and a sense of purpose combine to provide a rewarding professional experience that promotes fairness, dignity, and respect for all employees.

KEY MILESTONES

To truly understand the DHT culture is to know the history. The people behind the name. The passion for better serving customers with a strong sense of purpose and value. The desire to continuously be the best and drive an industry forward.



1932-1970'S

Founded- 1938 (NYC)

1980- 2008

1984- DHT was formed through merging Lindy Coil and Central Water Heater.

2009-2021

2012- Moved Corporate Head Quarters to Towaco, NJ

2022-Today

2022- acquires assets and key personnel of Sussman Electric Boiler

Product Introductions:

- Pot-bellied stoves
- Lindy Tankless Coils
- Shell and Tube Heat Exchangers
- Domestic Hot Water Generators
- Clean Steam Generators
- Central Tankless Coils

Product Introductions:

- Specialized Tube Bundles
- HVAC Coils
- Heat Exchangers
- Techanium Indirect Water Heaters

Product Introductions:

- ST Series - Semi Instantaneous Water Heaters
- SP Series -Indirect Water Heaters
- STP Series - Indirect Storage Water Heaters
- SS Series -Unfired Steam Generators

Product Introductions:

- EW Series - Electric Hot Water Boilers
- ES Series -Electric Steam Boilers
- MBA Series -Electric Steam Generators
- SSB Series - Stainless Steel Electric Steam Boilers
- SVS Series - Electric Steam Boilers
- SWW Series - Vertical Hot Water Boilers
- EWxSeries - Patent Pending

THE DHT TEAM

We believe the strength in DHT is derived from the talents, ideas and experiences of our people.

EXECUTIVE MANAGEMENT TEAM

JAKE GOLDBERG
President/ CEO

NORMAN GOLDBERG
Chairman, Residential Sales

KEN KAPLAN
Chairman, Lindy Coil Sales

LEADERSHIP TEAM

KEN BUDESA
Controller

PETER RIMASSA
VP of Engineering & Product Management

NEIL PILAAR
VP/General Manager

CHRIS BOVE
National Sales Manager

LORELLE ROSS
Human Resources Manager

KEY TEAMS- CUSTOM COMMERCIAL/ INDUSTRIAL PROJECTS

ENGINEERING

- Peter Rimassa- Director of Engineering
- Yevgeniy Chudnovsky- Sr. Thermal Process Engineer
- Dean Montesano- New Product Development Engineer

OPERATIONS

- Paul Cox- Director of Operations
- Jim Migliore- Production Supervisor
- Scott Adams- Shipping Supervisor
- (5) Qualified ASME Welders:
 - Carbon Steel
 - 304/ 316/ AL6XN/ Monel/ Hastelloy, etc.
 - Full and Spot X-Ray
 - Ultrasonic Testing
 - Magnetic Particle Inspection
 - Liquid Penetrant Inspection
 - PMI

OUR FACILITY

Our facility is centrally located in Towaco, NJ, just 45 minutes west of NYC and 30 minutes from Newark Airport making it easy to service our customers nationwide. DHT maintains a clean and safe work environment, organized in lean manufacturing cells, to manufacture and deliver high quality heat transfer equipment.

Location: Towaco, NJ

Manufacturing Area: 70,000 sq ft.

Office Area: 5,000 sq ft.

Employees: 70+



PRINCIPAL INSPECTION & TESTING INSTRUMENTS

Quality control processes are set up at every stage of production with the strictest of standards to adhere to; ensuring all production is of the highest quality.

- Pressure gauges from 30 PSIG to 3000 PSIG
- Calipers
- Micrometer
 - Weld Fillet Gages
 - High & Low welding Gages
 - Automatic Weld Size Gages
- Angle Meters
- Electronic Coating Thickness Gages
- Micro-finish Comparators Digital and Dial
- Hydro Test Stations
- Pneumatic Test Stations
- LPI Kit Test
- Flow Meters
- Infrared Thermometers
- Borescopic Inspection Tools
- Multi-meter Electrical Testing Instrument
- Electronic PID Simulation Testing & Commissioning Tool

FACILITY & MACHINING EQUIPMENT

All of our machines are maintained on a regular basis with a thorough preventative maintenance program. This ensures that close and consistent tolerances will be run on every part we machine.

Assembly Bays:

- 40x120, 24ft high with 5 Ton overhead 18 ft under hook
- 40x120, 24ft high with 1 Ton overhead 18 ft under hook

Lifting Capacity:

- 5 ton crane

Cutting Equipment:

- Plate Shear
 - Wysong c/s 3/8" thk x 12"
 - S/S 1/4" thk x 12"
 - Diamond pl. 1/4" x 12"
- Plasma Cutting- Lincoln Product – 125
 - Oxy Acetylene Torch Table
 - Oxy Acetylene Beveling

Machining:

- CNC Haas- VF8 (High Speed thru spindle coolant drill)
- Radial:
 - Hercules 5' Swing
 - Punching- CNC Amada Machine 2005

Welding:

- Jet Line Automatic Seam Welding 10' long
- Lincoln Mig Welding 400 Amp
- L-Tec Mig Welding 400 Amp
- Lincoln Mfg Welding 450 Amp
- Lincoln Arc Welding 400 Amp
- Nelson TRW Stud Welding 450 Amp
- Lincoln Mig Welding 600 Amp
- Miller Maxten Helo Arc 450 Amp @ auto-matic wire feed
- Fronius TPS 400i
- Ventilation Nedermath System

Bending:

- (5) Hydraulic Tube bending machine- Pines & Wallace from 1/2' to 1 1/2" diameter

Misc. Subcontract Items:

- Stress Relieving
- Sandblasting and paint
- Radiography
- PMI
- Ultra Sonic
- Weld Harness

ASME Inspection Agency: Commercial Union

COMMERCIAL/ INDUSTRIAL PRODUCTS

Diversified Heat Transfer is world-class manufacturer of innovative heat transfer products.

ST SERIES



- Semi-Instantaneous Water Heaters- Steam-to-Water or Water-to-Water
- Available in single and double wall construction.
- Copper (standard) and optional CuNi or SS bundle material of construction.
- Copper, Cu-Ni or SS material in contact with water (potable water).
- Fully packaged solution for quick and easy single point connections.
- Available in vertical or horizontal (optional) construction.
- Compact foot print- Fits through a standard doorway
- Standard trim is available up to 150 psi and optional up to 300 psi.
- Fully modulating energy input for precise temperature controls.
- Available in electronic or pneumatic controls.
- Advanced PID electronic controls compatible with Building Management Systems.
- Certifications: ASME, UL (Controls)

SP SERIES



- Indirect- Fired, Semi-Instantaneous Boiler Water- Fired Water Heater
- Available with a Single Wall & Double Wall heat exchanger (Braze Plate or Plate & Frame)
- $\pm 4^{\circ}\text{F}$ temp control, 5°F Approach Temperature
- Fully modulating electronic 3-Way control valve
- Potable water: Stainless steel or copper alloys construction for domestic water
- Advanced electronic PID controls compatible with Building Management Systems
- Fully packaged solution for quick and easy single point connections
- Compact Footprint- unit can fit through standard doorways
- Compatible with Medium, Normal and Low Temperature Boiler Water
- Certifications: ANSI/AHRI 400, ASME, UL (Controls)

STP SERIES



- Recovery rates from 600 to 10,800 GPH with 1800F boiler water for 1000F temperature rise.
- Tank Sizes ranging from 80 to 765 gallons standard, with larger sizes by special order
- Domestic storage temperature control range 50-1800F.
- Double Wall Braze Plate Heat Exchanger - 316L stainless steel plates. (AHRI 400 Rated)
- Compact Footprint
- Modular design with simplex and duplex heat exchanger options available for built-in redundancy and extra capacity.
- Advanced electronic PID controls compatible with Building Management Systems
- Fully Assembled- Skid Mounted Package for quick and easy single point connections
- Certifications: ASME, UL (Controls)

COMMERCIAL/ INDUSTRIAL PRODUCTS

Diversified Heat Transfer is world-class manufacturer of innovative heat transfer products.



SS SERIES

- Unfired Steam Generator
- Fiberglass Insulation
- 20 Gauge Steel Jacket With Enamel Paint
- Structural Steel Support Skid Base
- Boiler Steam / Clean Steam Pressure Gauges
- Blow Off Manual & Automatic
- Gauge Glass
- Steam Separator
- High Pressure & Low Water Cut Off
- ASME Pressure Relief Valve
- Total Dissolved Solids Monitor (optional)
- Certifications: ASME, UL (Controls)



SUSSMAN ELECTRIC BOILERS

- ES and SVS Carbon Steel Electric Steam Boilers
- SSB and SVS Stainless Steel Electric Steam Boilers
- MBA and ESA Ultra-Compact Electric Steam Boilers
- SHE Electric Steam Heat Exchangers
- SSH Electric Steam Superheaters
- EW and SVW Electric Hot Water Boilers
- EWx Series of Modular Electric Hot Water Boilers (30-1200kW)
- All products meet or exceed UL, CSA, and NEC standards and are built to ASME Boiler Codes



SHELL & TUBE HEAT EXCHANGERS & REPLACEMENT BUNDLES

- Custom & Standard Designs
 - Generator Coolers
 - Intercoolers/ Aftercoolers
 - Gas Reboiler
 - Steam Dump Condensers
 - Oil Heaters
 - and more
- U Tube & Straight Tube Design
- Carbon Steel, Stainless Steel & Exotic Alloy Materials
- ASME Tested and Stamped
- Lindy Tankless Coils



PLATE & FRAME HEAT EXCHANGERS

- Single / Double wall construction
- Up to 24" ports
- Plate material- 304, 316, Titanium
- High thermal efficiency
- Low hold-up volume
- Easy maintenance
- Cost-effective solutions especially when exotic materials are required
- Certifications: ASME, AHRI 400
- Replacement Parts Available



BRAZED PLATE HEAT EXCHANGERS

- Radiant Heating
- Snow Melt
- HVAC/ Refrigeration
- Domestic Hot Water
- Other applications



HVAC COILS

- Water, Steam and other mediums
- High pressure applications
- In a full range of materials including copper, brass, aluminum, stainless steel, carbon steel and 90/10 Cupro-Nickel, Plate Fin and Helical Fin

CERTIFICATE OF QUALIFICATION

The National Board of Boiler and Pressure Vessel Inspectors: R Stamp, NB Stamp

THE NATIONAL BOARD
OF
BOILER & PRESSURE VESSEL INSPECTORS

Certificate of Authorization



This is to certify that
Diversified Heat Transfer, Inc.
439 Main Road (Route 202)
Towaco, New Jersey 07082
United States
Acceptable Abbreviation: DHT

is authorized to use the R Symbol in accordance with the provisions of the National Board Inspection Code and NB-415, Accreditation of "R" Repair Organizations.

All activities within the scope of this Authorization shall be controlled by the above location.
The scope of this Authorization is limited to:


Metallic
Repairs and Alterations
At
Shop and Field Locations

Certification Number: 4763
Issue Date: October 25, 2022
Expiration Date: September 20, 2025
Executive Director 



THE NATIONAL BOARD
OF
BOILER & PRESSURE VESSEL INSPECTORS

Certificate of Authorization to Register




This is to certify that
Diversified Heat Transfer, Inc.
439 Main Road (Route 202)
Towaco, New Jersey 07082
United States


is authorized to apply the "NB" mark and register boilers, pressure vessels or other pressure retaining items with the National Board.

The scope of Authorization is limited to items manufactured in accordance with:

ASME Designator(s): H, S, U, UM
Issue Date: May 9, 2015
Revision Date: September 20, 2022

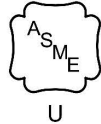
This Certificate of Authorization to Register will remain in effect as long as the manufacturing organization holds a valid Certificate of Authorization issued by the American Society of Mechanical Engineers.

Executive Director 



CERTIFICATE OF QUALIFICATION

ASME- The American Society of Mechanical Engineers



CERTIFICATE OF AUTHORIZATION

The named company is authorized by The American Society of Mechanical Engineers (ASME) for the scope of activity shown below in accordance with the applicable rules of the ASME Boiler and Pressure Vessel Code. The use of the ASME Single Certification Mark and the authority granted by this Certificate of Authorization are subject to the provisions of the agreement set forth in the application. Any construction stamped with the ASME Single Certification Mark shall have been built strictly in accordance with the provisions of the ASME Boiler and Pressure Vessel Code.

COMPANY:

Diversified Heat Transfer, Inc.
439 Main Road (Route 202)
Towaco, New Jersey 07082
United States

SCOPE:

Manufacture of pressure vessels at the above location and field sites controlled by the above location (This authorization does not cover impregnated graphite)

AUTHORIZED: **September 20, 2022**

EXPIRES: **September 20, 2025**

CERTIFICATE NUMBER: **27740**

Handwritten signature of the Board Chair, Conformity Assessment.

Board Chair, Conformity Assessment

Handwritten signature of the Managing Director, Standards & Engineering Services.

Managing Director, Standards & Engineering Services

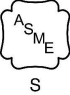
The American Society of Mechanical Engineers



CERTIFICATE OF QUALIFICATION

ASME- The American Society of Mechanical Engineers

CERTIFICATE OF AUTHORIZATION



The named company is authorized by The American Society of Mechanical Engineers (ASME) for the scope of activity shown below in accordance with the applicable rules of the ASME Boiler and Pressure Vessel Code. The use of the ASME Single Certification Mark and the authority granted by this Certificate of Authorization are subject to the provisions of the agreement set forth in the application. Any construction stamped with the ASME Single Certification Mark shall have been built strictly in accordance with the provisions of the ASME Boiler and Pressure Vessel Code.


COMPANY:


Diversified Heat Transfer, Inc.
439 Main Road (Route 202)
Towaco, New Jersey 07082
United States

SCOPE:


Manufacture and assembly of power boilers at the above location only

AUTHORIZED: **September 20, 2022**
EXPIRES: **September 20, 2025**
CERTIFICATE NUMBER: **60363**



Board Chair, Conformity Assessment


Managing Director, Standards & Engineering Services

The American Society of Mechanical Engineers



CERTIFICATE OF AUTHORIZATION



The named company is authorized by The American Society of Mechanical Engineers (ASME) for the scope of activity shown below in accordance with the applicable rules of the ASME Boiler and Pressure Vessel Code. The use of the ASME Single Certification Mark and the authority granted by this Certificate of Authorization are subject to the provisions of the agreement set forth in the application. Any construction stamped with the ASME Single Certification Mark shall have been built strictly in accordance with the provisions of the ASME Boiler and Pressure Vessel Code.


COMPANY:


Diversified Heat Transfer, Inc.
439 Main Road (Route 202)
Towaco, New Jersey 07082
United States

SCOPE:


Manufacture of miniature pressure vessels at the above location only

AUTHORIZED: **September 20, 2023**
EXPIRES: **September 20, 2024**
CERTIFICATE NUMBER: **59352**


Board Chair, Conformity Assessment


Managing Director, Standards & Engineering Services

The American Society of Mechanical Engineers

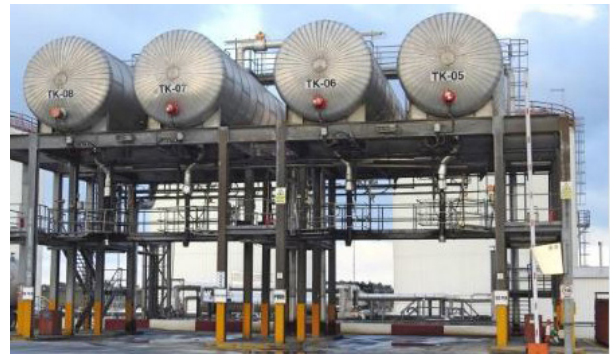


INDUSTRIES

Our team can provide solutions to a broad range of industries and market sectors, including Oil and Gas, Chemical, Power Generation, Pharmaceutical, Paper and Pulp, Food and Beverage.



PETROCHEMICAL AND OIL & GAS



CHEMICAL



POWER GENERATION



PHARMACEUTICAL



PAPER & PULP



FOOD & BEVERAGE

CUSTOMERS

Our customers come from a wide range of Industries. We develop solutions in close cooperation with our customers which meet the full measure of requirements for the particular environment.



ATOFINA

BASF



BAZAN GROUP
OIL REFINERIES LTD



conEdison



Entergy

Novelis



FLUOR DANIEL
A FLUOR Company



GlaxoSmithKline



**Koch
Modular**
PROCESS SYSTEMS



NASH
by Gardner Denver

Nestlé

P&G

Procter & Gamble



**SENECA FARMS
BIOCHAR**
LLC

**THE
SHAW
GROUP**



Shell Chemicals

SIEMENS

SULZER



**US Army Corps
of Engineers**®



Weyerhaeuser

REFERENCE LIST

We believe that our business starts with the customer. Our commitment to the highest standards of service excellence sets us apart from our competitors.

Company: NFM Welding Engineers, Inc.
Contact: Chris Tucker
Title: Director of Process Engineering
Address: 577 Oberlin Road, Massillon, OH 44647
Phone: 330-837-3868
Email: ctucker@nfm.net
Web: www.nfm.net

Company: Seneca Farms Biochar LLC
Contact: John H Schwartz
Title: Process Engineer
Address: 1880 East Ridge Road, Rochester, NY 14622
Phone: 585-484-0601
Email: johns@sfbiochar.com
Web: www.sfbiochar.com

Company: Unique Systems Inc.
Contact: Bob Harris
Title: Engineering Manager
Address: 4 Saddle Road, Cedar Knolls, NJ 07927
Phone: 973-455-0440
Email: rharris@uniquesystems.com
Web: www.uniquesystems.com

TESTIMONIAL

“DHT was very helpful in the design of the heat exchangers for our new Bio Mass pyrolysis equipment. The kiln (HBK-1000) has the ability to produce consistent high volume, high quality carbon products. Seneca Farms Biochar’s core configuration produces biochar, wood vinegar and excess heat energy, which in the simplest case can be used to pre-dry feedstock and/or provide heat to buildings, agricultural and industrial processes. DHT was knowledgeable, easy to work with and were cost effective . DHT did everything they promised and would highly recommend them for your heat transfer needs.”

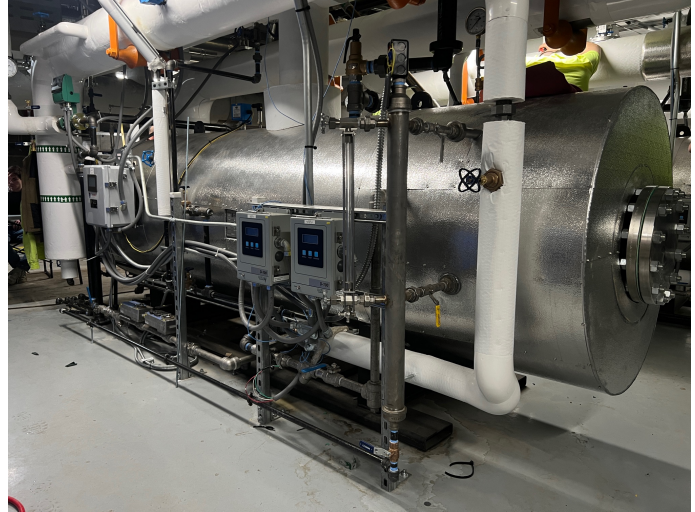
John H Schwartz
Seneca Farms Biochar LLC

PROJECTS

CLEAN STEAM GENERATOR

Location: Kettering Health Main Campus, Kettering, OH
DHT Model No.: SS-H Unfired Steam Generator (USG)

The SS-H installed in this medical center provides clean, energy-efficient steam to the entire hospital for sterilization and humidification purposes.



REFINERY HEAT EXCHANGERS

Location: Heartland Refinery Groups - Columbus, OH
DHT Model No.: NEN24S1-168, NENE24-288-X-1,2

Heptan Vapors Condenser and Twin Oil Heaters with specially designed expansion joints were thermally and mechanically designed for lube oil refinery service.



STEAM DUMP CONDENSER

Location: Heat Recovery Plant - Santa Anna, CA
DHT Model No.: AEL20B1-72-1,2

These two twin steam dump condensers are used to recover large amount of steam from turbine trip off and start up.



PROJECTS

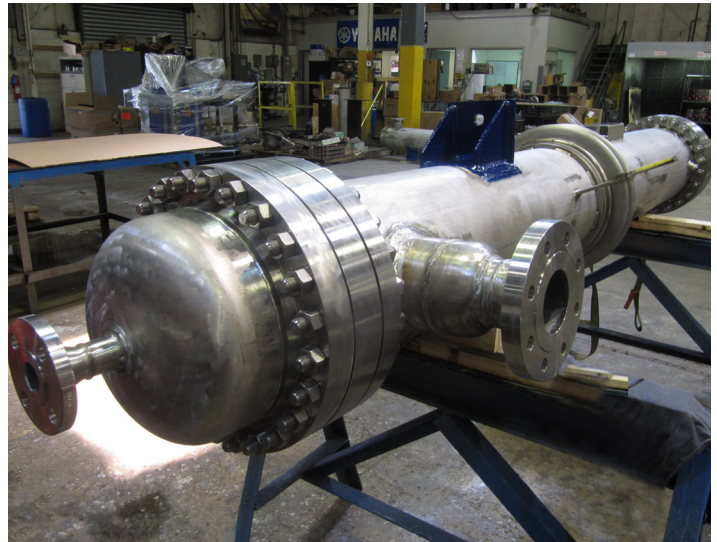
VACUUM STEAM EJECTOR SKIDS

LOCATION: Nitech Vacuum Systems- New Jersey
Model No.: BEU10B2-94 Intercondenser, & BEU8B2-58 Aftercondenser
Stacked system of Two Heat Exchangers in Series DHT



PROCESS HEATER

LOCATION: Biexin, China
Model No.: BEM20S1-192
Foam rubber process heater special design expansion joint all 316 stainless steel.



NUCLEAR CYCLOTRON COOLER

LOCATION: Texas A&M University- College Station, Texas
BEU all 316 stainless steel construction.



PROJECTS

HIGH PRESSURE NATURAL GAS COOLER

Location: Combines Cycle Power Plant- New Jersey

DHT Model No.: BEU18B2-36

This gas-to-gas heat exchanger cools down high pressure and temperature gas with atmospheric air



MARINE SERVICE HEAT EXCHANGER

Location: Maersk Marine

DHT Model No.: BEM30A1-96-X

This Low Pressure Steam To Sea Water Heat Exchanger with expansion joint is installed on a large cargo ship



LOW PRESSURE VACUUM GAS REBOILER

Location: BP- Toledo, Ohio

DHT Model No.: BEM24S1-60

This Vacuum Gas Heat Exchanger with specially designed rod baffle is designed to minimize the pressure drop on the process gas side of the unit



PROJECTS

HASTELLOY PHARMACEUTICAL HEAT EXCHANGER

Location: Cambrex Pharmaceutical- Charles City, IA

DHT Model No.: NEN20S1-144-X

This Hastelloy C-276/SS316 Shell & Tube Cryogenic Service Condenser was designed to condense DCM (dichloromethane) using low temperature cryo fluid as a cooling medium. DHT manufactured Four (4) units for Cambrex Pharmaceutical Plant



PHARMACEUTICALS STAINLESS STEEL HEAT EXCHANGER

Location: Pfizer, Inc- Kalamazoo, MI

DHT Model No.: NEN14B1-120

This entire SS316 Shell & Tube Heat Exchanger condenses methylene chloride vapors in tubes and is used for chemical distillation process



LEAN/RICH AMINE HEAT EXCHANGER

LOCATION: EFS Midstream- Natural Gas Plant, Pawnee, TX

DHT Model No.: BGM18A4-240-1,2_S

This system of two heat exchangers in series vaporizes rich amine on the tube side while cooling down lean amine on the shell side



PROJECTS

REFINERY HEAT EXCHANGERS

Location: North Atlantic Refining Limited (NARL)-
Newfoundland, Canada

DHT Model No.: BFU34B4-216

This two pass shell heater is used in refinery process called “fractionation bottoms debottlenecking” vaporizing stripper feed on the tube side when supplied with fractionator bottoms (hot oil) on the shell side

.....



STANDARD CONDENSATE PREHEATER

Location: Manhattan, NY

DHT Model No.: SC12B2-72

This shell and tube u-tube heat exchanger preheats condensate before it is fed into the boiler to supply clean steam to deaerator

.....



INDUSTRIAL DRIER

Location: Wyssmont Company- Fort Lee, NJ

DHT Model No.: E-20S1-144

Straight tube one pass heat exchanger



PROJECTS

HOT OIL HEATER

Location: Cavendish Farms- Nova Scotia, Canada

DHT Model No.: BEU-30B2-240

CRN ASME Vessel all carbon steel construction with 316 stainless steel tubes.



LUBE OIL COOLERS

Location: US Army Corp of Engineers- Gavins Point, IA

DHT Model No.: TBW-24B2-168

Hydro Electric Dam Lube Oil Coolers



TUBE BUNDLE

Location: Combined Cycle Power Plant- San Diego, CA

DHT Model No.: TBW10B2-96

Titanium Tube Bundle for ocean water power plant cooling





CONTACT US:

439 Main Rd., Route 202
Towaco, NJ 07082

Phone: 718-386-6666
Toll Free: 800-221-1522
Email: sales@dhtnet.com

Web: www.dhtnet.com