

NOTES:

1. MATERIALS OF CONSTRUCTION

1. VESSEL AND PIPING: CARBON STEEL AND CAST IRON

2. JACKET: STAINLESS STEEL AND PAINTED STEEL

2. PRESSURE VESSEL BUILT IN ACCORDANCE WITH ASME SECTION IV AND CARRIES AN "H" STAMP

3. MAXIMUM ALLOWABLE WORKING PRESSURE UP TO 150PSI

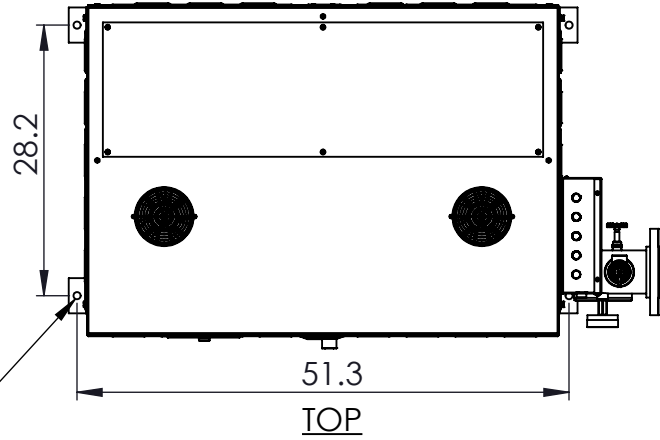
4. BOILER IS UL LISTED TO STANDARD 834

5. FOR EWx630- EWx960 VOLTAGES 480V/3 & 600V/3

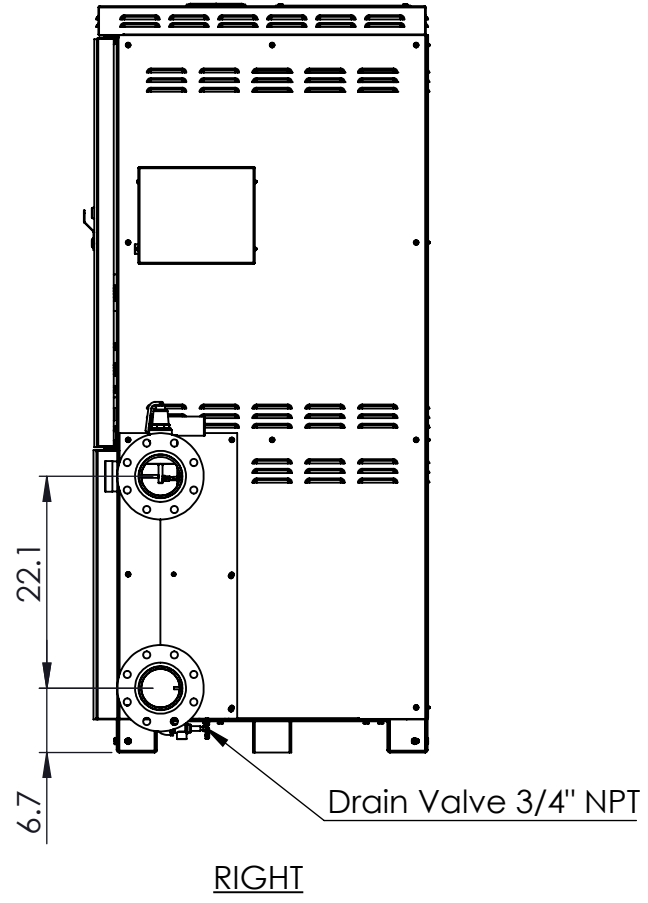
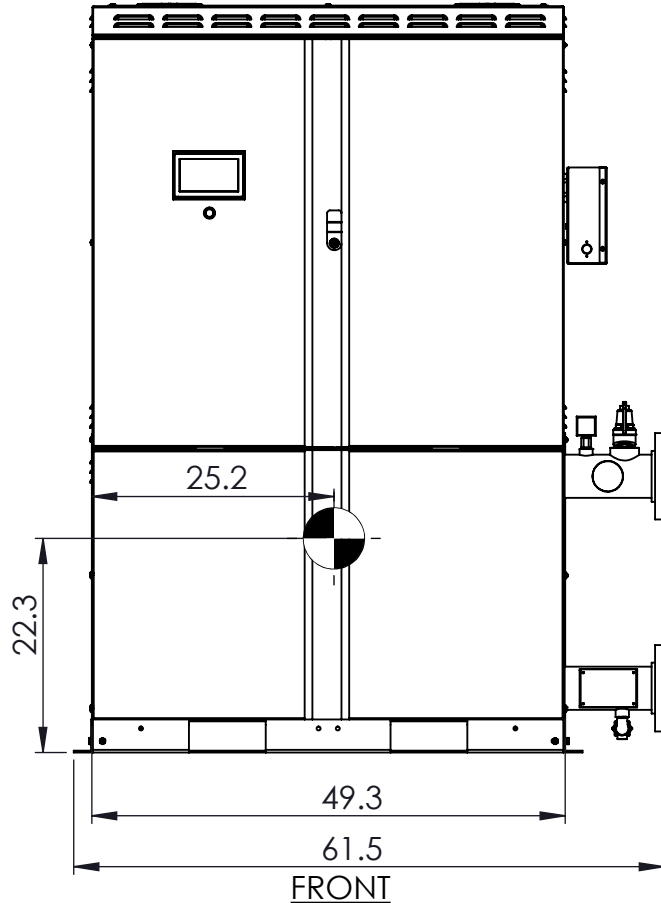
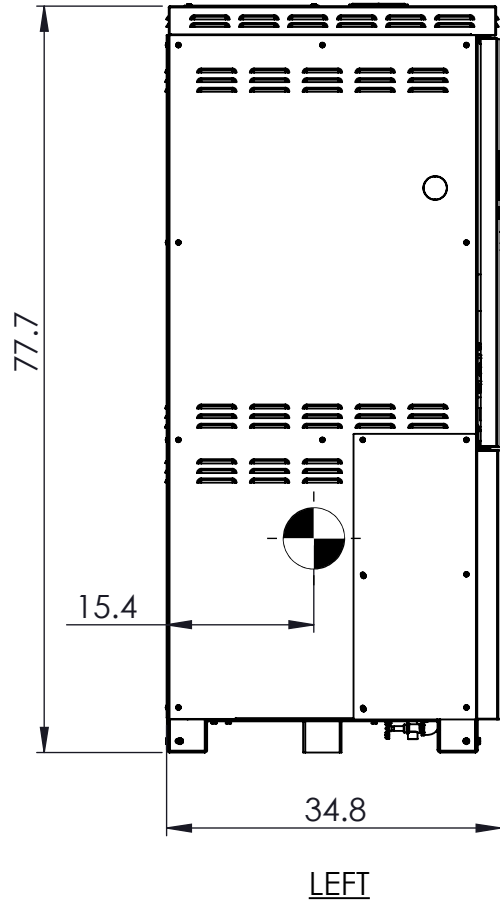
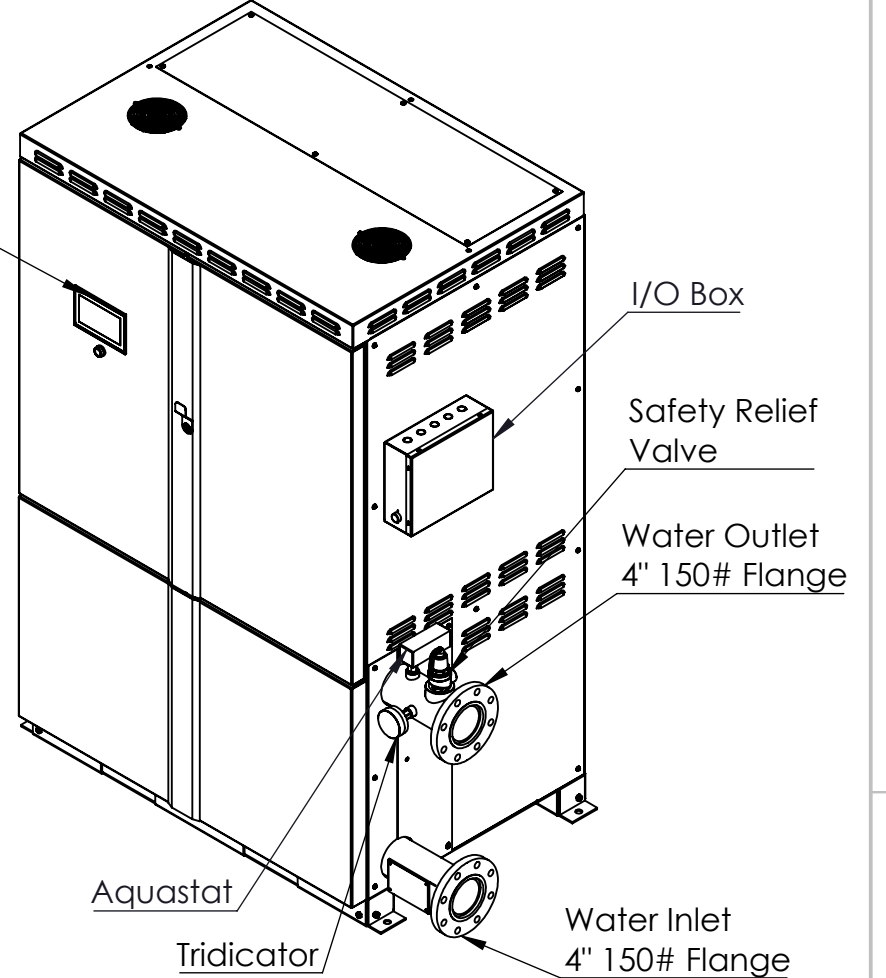
6. BACNET IP AND MSTP, MODBUS RS485, AND 4-20 mA REMOTE SET POINT STANDARD

7. REFER TO THE INSTALLATION AND OPERATION MANUAL FOR MORE INFORMATION

Mounting Holes  
4 Ø .75"



Operating  
Controller



DIMENSIONS ARE SHOWN IN INCHES (CENTIMETERS)  
TOLERANCES ARE AS FOLLOWS UNLESS OTHERWISE SPECIFIED  
X.XX X.XXX X.XXXX ANGULAR FINISH  
±.12 ±.031 ±.0156 ±1.0° 250  
REMOVE AND DEBURR SHARP EDGES AND CORNERS  
ALL DIMENSIONS ARE AFTER FINISH OR PLATING  
REFERENCE DIMENSIONS ARE SHOWN IN PARENTHESES ( )  
CRITICAL DIMENSIONS ARE SHOWN IN

THIS DRAWING AND/OR SPECIFICATIONS ARE THE PROPERTY OF DIVERSIFIED HEAT TRANSFER INC. THIS CONFIDENTIAL AND PROPRIETARY INFORMATION SHALL NOT BE USED, COPIED OR REPRODUCED IN ANY MEANS AS THE BASIS FOR MANUFACTURE OR SALE OF APPARATUS WITHOUT WRITTEN AUTHORIZATION FROM OWNER.



439 MAIN RD. TOWACO NJ 07082  
PHONE: (800) 221-1522 FAX: (718) 386-7809

TITLE EWx630-EWx960 ELECTRIC WATER BOILERS

THIRD ANGLE PROJECTION

DWG. SCALE  
1:20

MATERIAL SPEC:

	NAME	DATE	DWG#	REV
DRAWN BY	JH	5/4/2026	EWx630-EWx960	A
CHECKED BY			SHEET 1 OF 2	

4

3

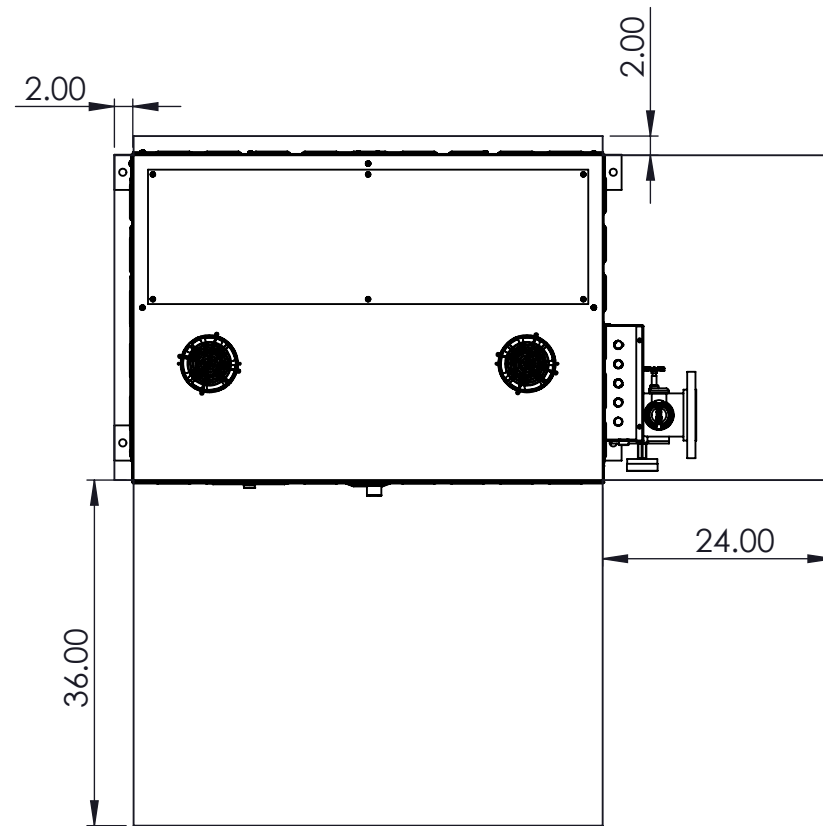
2

1

## NOTES:

- SERVICE CLEARANCES TO BE IN CONFORMANCE TO NEC REQUIREMENTS. ALLOW A MINIMUM OF 36" CLEARANCE IN FRONT OF DOORS FOR SERVICING OF HEATING ELEMENTS. RECOMMENDED 24" CLEARANCE FOR OTHER SIDES OF BOILER FOR SERVICING.
- MINIMUM 1" CLEARANCE TO ALL COMBUSTIBLE MATERIALS

## Service Clearance Requirements



Boiler	Dry Weight (LBS)	Wet Weight (LBS)	Total Volume (Gal)	Boiler Headers Size (150# Flange)	Drain Size (NPT)	Safety Valve Outlet Size (NPT)
EWx630	2533	2883	41	4"	0.75"	2" (50, 60 PSI) 1.5" (75 PSI) 1.25" (100,125,150 PSI)
EWx660	2548	2898				
EWx690	2563	2913				
EWx720	2578	2928	46.6	4"	0.75"	2" (50, 60 PSI) 1.5" (75 PSI) 1.25" (100,125,150 PSI)
EWx750	2831	3228				
EWx780	2846	3243				
EWx810	2861	3258	52.2	4"	0.75"	2" (50, 60 PSI) 1.5" (75 PSI) 1.25" (100,125,150 PSI)
EWx840	2881	3278				
EWx870	3134	3578				
EWx900	3154	3598	52.2	4"	0.75"	2" (50, 60 PSI) 1.5" (75 PSI) 1.25" (100,125,150 PSI)
EWx930	3169	3613				
EWx960	3184	3628				

DIMENSIONS ARE SHOWN IN INCHES (CENTIMETERS)  
TOLERANCES ARE AS FOLLOWS UNLESS OTHERWISE SPECIFIED  
X.XX X.XXX X.XXXX ANGULAR FINISH  
±.12 ±.031 ±.0156 ±1.0° 250  
REMOVE AND DEBURR SHARP EDGES AND CORNERS  
ALL DIMENSIONS ARE AFTER FINISH OR PLATING  
REFERENCE DIMENSIONS ARE SHOWN IN PARENTHESES ( )  
CRITICAL DIMENSIONS ARE SHOWN IN

THIS DRAWING AND/OR SPECIFICATIONS ARE THE PROPERTY OF DIVERSIFIED HEAT TRANSFER INC. THIS CONFIDENTIAL AND PROPRIETARY INFORMATION SHALL NOT BE USED, COPIED OR REPRODUCED IN ANY MEANS AS THE BASIS FOR MANUFACTURE OR SALE OF APPARATUS WITHOUT WRITTEN AUTHORIZATION FROM OWNER.

THIRD ANGLE PROJECTION



DWG. SCALE

1:20

MATERIAL SPEC:



**SUSSMAN**  
ELECTRIC BOILERS  
439 MAIN RD. TOWACO NJ 07082  
PHONE: (800) 221-1522 FAX: (718) 386-7809

TITLE EWx630-EWx960 ELECTRIC WATER BOILERS

NAME	DATE	DWG#	REV
DRAWN BY JH	5/4/2026	EWx630-EWx960	A
CHECKED BY		SHEET 2 OF 2	

4

3

2

1