

4

3

2

1

NOTES:

1. MATERIALS OF CONSTRUCTION

1. VESSEL AND PIPING: CARBON STEEL AND CAST IRON

2. JACKET: STAINLESS STEEL AND PAINTED STEEL

2. PRESSURE VESSEL BUILT IN ACCORDANCE WITH ASME SECTION IV AND CARRIES AN "H" STAMP

3. MAXIMUM ALLOWABLE WORKING PRESSURE UP TO 150PSI

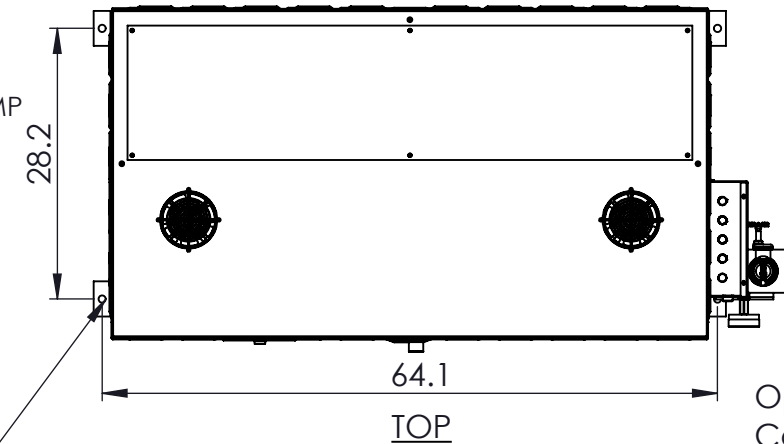
4. BOILER IS UL LISTED TO STANDARD 834

5. FOR EWx990- EWx1200 VOLTAGES 480V/3 & 600V/3

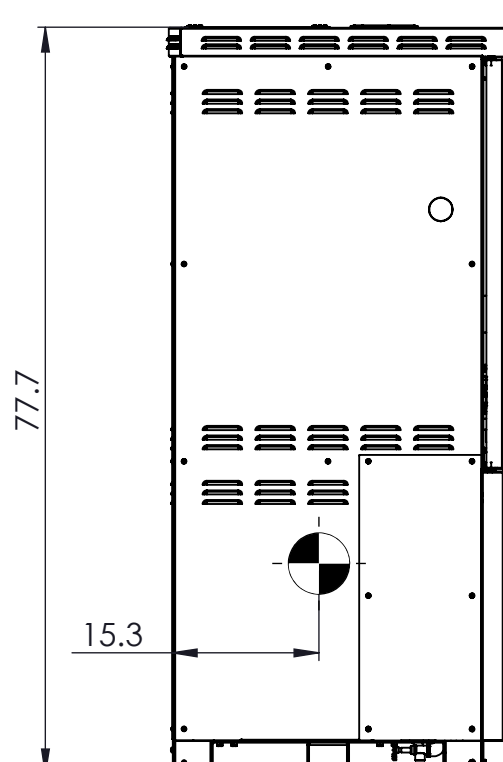
6. BACNET IP AND MSTP, MODBUS RS485, AND 4-20 mA REMOTE SET POINT STANDARD

7. REFER TO THE INSTALLATION AND OPERATION MANUAL FOR MORE INFORMATION

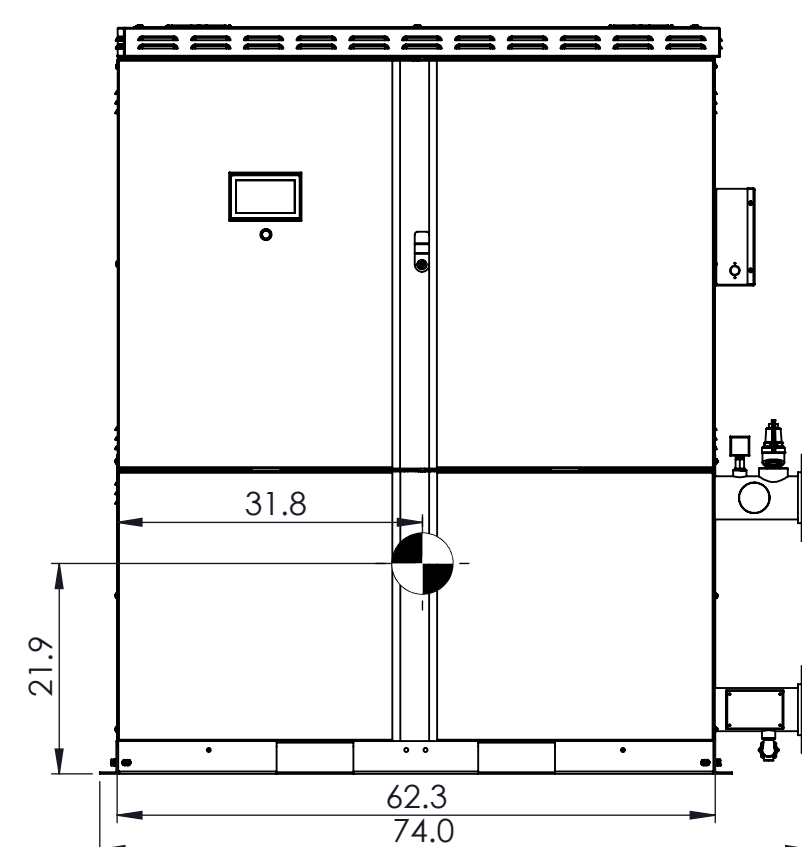
Center of Gravity		
Length	Width	Height
31.8	15.3	21.9



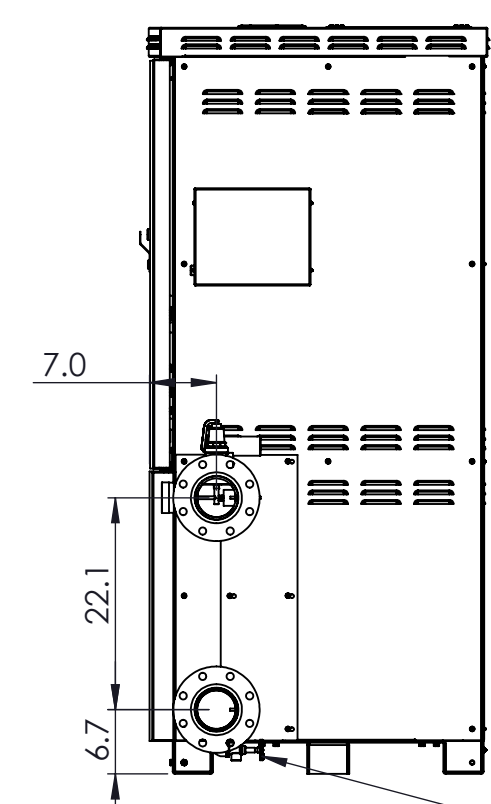
Operating Controller



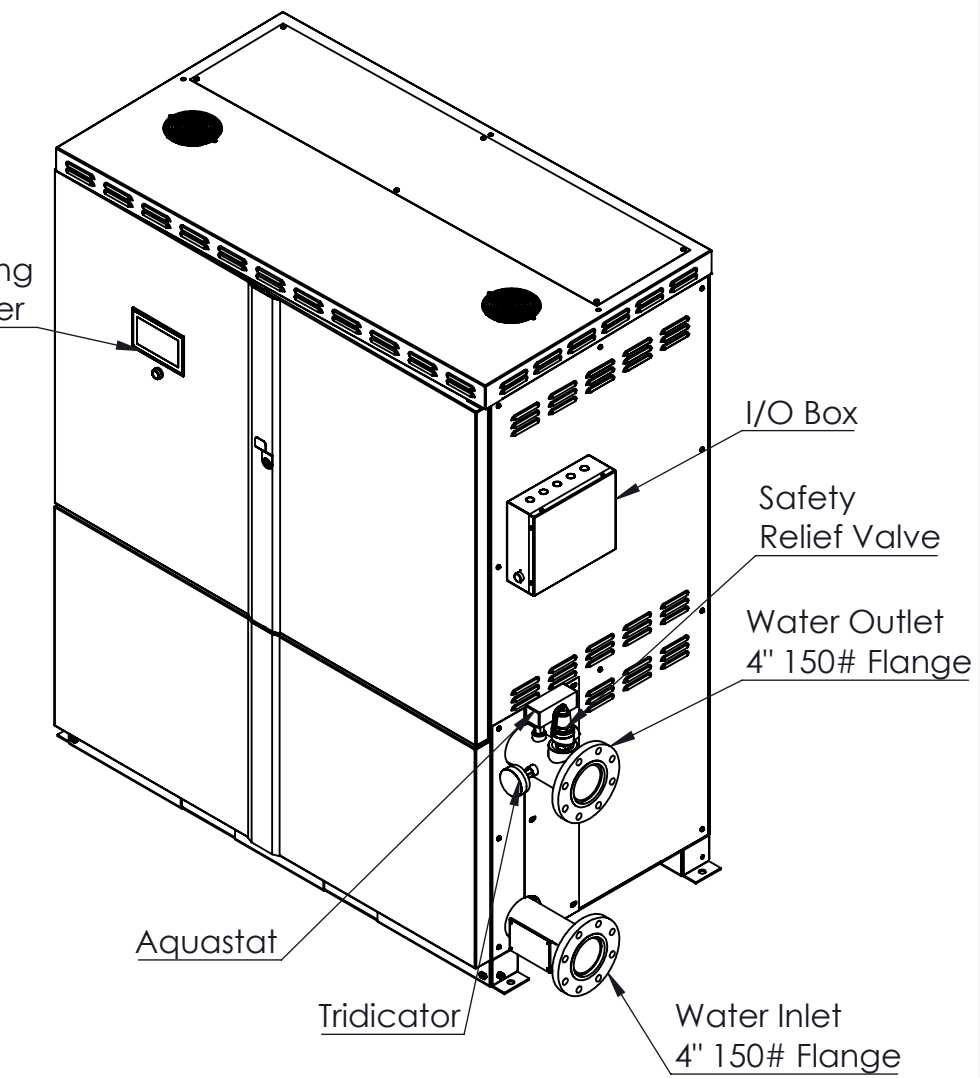
LEFT



FRONT



RIGHT



DIMENSIONS ARE SHOWN IN INCHES [CENTIMETERS]
TOLERANCES ARE AS FOLLOWS UNLESS OTHERWISE SPECIFIED

X.XX	X.XXX	X.XXXX	ANGULAR	FINISH
±.12	±.031	±.0156	±1.0°	250

REMOVE AND DEBURR SHARP EDGES AND CORNERS
ALL DIMENSIONS ARE AFTER FINISH OR PLATING
REFERENCE DIMENSIONS ARE SHOWN IN PARENTHESES ()
CRITICAL DIMENSIONS ARE SHOWN IN

THIS DRAWING AND/OR SPECIFICATIONS ARE THE PROPERTY OF DIVERSIFIED HEAT TRANSFER INC. THIS CONFIDENTIAL AND PROPRIETARY INFORMATION SHALL NOT BE USED, COPIED OR REPRODUCED IN ANY MEANS AS THE BASIS FOR MANUFACTURE OR SALE OF APPARATUS WITHOUT WRITTEN AUTHORIZATION FROM OWNER.



439 MAIN RD. TOWACO NJ 07082
PHONE: (800) 221-1522 FAX: (718) 386-7809

TITLE EWx990-EWx1200 ELECTRIC WATER BOILERS

THIRD ANGLE PROJECTION 	DWG. SCALE 1:20	MATERIAL SPEC:	NAME JH	DATE 5/4/2026	DWG# EWx990-EWx1200	REV B
			CHECKED BY		SHEET 1 OF 2	

4

3

2

1

B

B

A

A

4

3

2

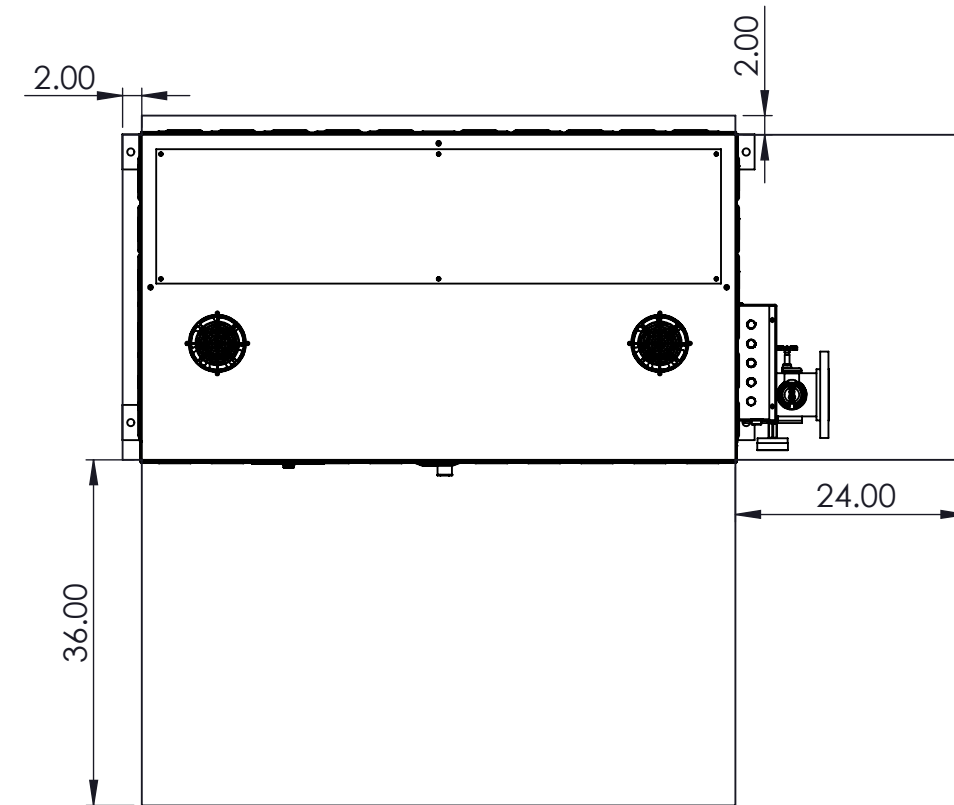
1

NOTES:

- SERVICE CLEARANCES TO BE IN CONFORMANCE TO NEC REQUIREMENTS. ALLOW A MINIMUM OF 36" CLEARANCE IN FRONT OF DOORS FOR SERVICING OF HEATING ELEMENTS. RECOMMENDED 24" CLEARANCE FOR OTHER SIDES OF BOILER FOR SERVICING.
- MINIMUM 1" CLEARANCE TO ALL COMBUSTIBLE MATERIALS

Service Clearance Requirements

Boiler	kW	Elements	Voltage	Amp Draw	MBH	Min Flow (GPM)	Max Flow (GPM)
EWx990	990	33 x 30kW	480	1193	3310	36	368
			600	954			
EWx1020	1020	34x 30kW	480	1229	3411	36	368
			600	983			
EWx1050	1050	35x 30kW	480	1265	3511	36	368
			600	1012			
EWx1080	1080	36x 30kW	480	1301	3611	36	368
			600	1041			
EWx1110	1110	37x 30kW	480	1337	3712	40	409
			600	1070			
EWx1140	1140	38x 30kW	480	1373	3812	40	409
			600	1099			
EWx1170	1170	39x 30kW	480	1409	3912	40	409
			600	1128			
EWx1200	1200	40x 30kW	480	1446	4013	40	409
			600	1157			



Boiler	Dry Weight (LBS)	Wet Weight (LBS)	Total Volume (Gal)	Boiler Headers Size (150# Flange)	Drain Size (NPT)	Safety Valve Outlet Size (NPT)
EWx990	3592	4083	57.9	4"	0.75"	2" (50, 60 PSI)
EWx1020	3612	4103				
EWx1050	3632	4123				
EWx1080	3652	4143	63.5	4"	0.75"	1.5" (75 PSI)
EWx1110	3905	4443				
EWx1140	3925	4463				
EWx1170	3940	4478				
EWx1200	3955	4493				1.25" (100,125,150 PSI)

DIMENSIONS ARE SHOWN IN INCHES (CENTIMETERS)
TOLERANCES ARE AS FOLLOWS UNLESS OTHERWISE SPECIFIED
X.XX X.XXX X.XXXX ANGULAR FINISH
 $\pm .12$ $\pm .031$ $\pm .0156$ $\pm 1.0^\circ$ 250
REMOVE AND DEBURR SHARP EDGES AND CORNERS
ALL DIMENSIONS ARE AFTER FINISH OR PLATING
REFERENCE DIMENSIONS ARE SHOWN IN PARENTHESES ()
CRITICAL DIMENSIONS ARE SHOWN IN

THIS DRAWING AND/OR SPECIFICATIONS ARE THE PROPERTY OF DIVERSIFIED HEAT TRANSFER INC. THIS CONFIDENTIAL AND PROPRIETARY INFORMATION SHALL NOT BE USED, COPIED OR REPRODUCED IN ANY MEANS AS THE BASIS FOR MANUFACTURE OR SALE OF APPARATUS WITHOUT WRITTEN AUTHORIZATION FROM OWNER.

THIRD ANGLE PROJECTION



DWG. SCALE

1:20

MATERIAL SPEC:



SUSSMAN
ELECTRIC BOILERS
439 MAIN RD. TOWACO NJ 07082
PHONE: (800) 221-1522 FAX: (718) 386-7809

TITLE EWx990-EWx1200 ELECTRIC WATER BOILERS

NAME	DATE	DWG#	REV
DRAWN BY JH	5/4/2026	EWx990-EWx1200	B
CHECKED BY		SHEET 2 OF 2	

4

3

2

1